

mp53 | Validation File

TARGET Mus musculus transformation related protein 53 (Trp53)

CLONE NAME POE316A

DESCRIPTION rat monoclonal

ANTIGEN USED His-GST-mp53 recombinant protein

ISOTYPE IgG2a

SPECIES REACTIVITY mouse

LOCALIZATION nuclear

POSITIVE CONTROL mouse intestine

STORAGE BUFFER Tissue culture supernatant: 0.02% sodium azide

STORAGE Aliquot and store at 4C. Do not freeze

 Recommended

 Inconclusive

 Not Recommended

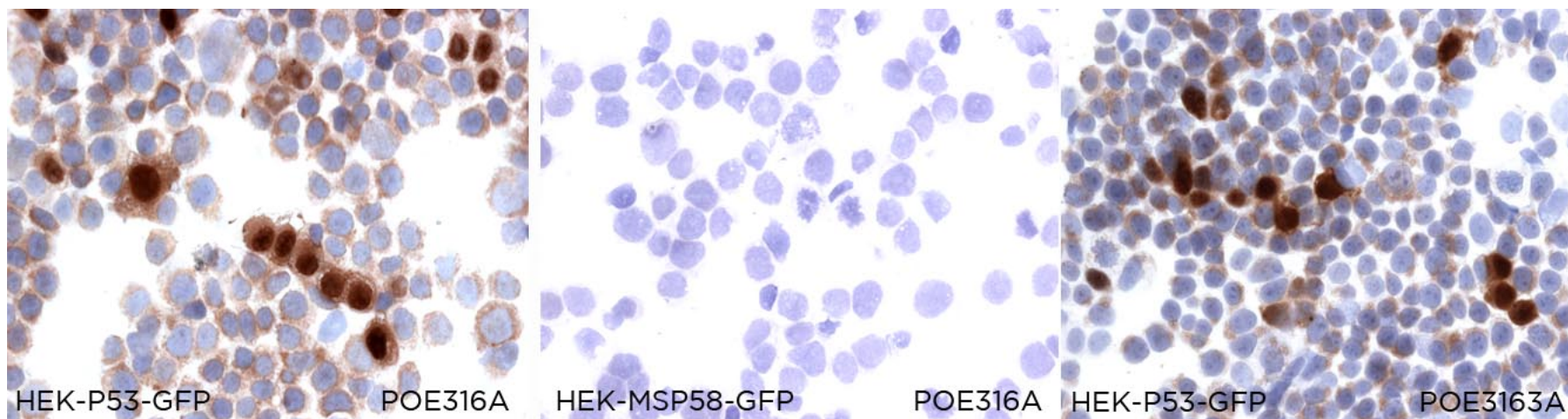
 Not Tested

APPLICATIONS

● | ICC | Immunocytochemistry

POE316A mAb is able to detect mouse p53 protein in immunocytochemistry.

To confirm that POE316A mAb recognizes mouse p53 protein, immunocytochemistry on frozen cytospin preparations of GFP-tagged mouse p53 expressed in HEK293T was performed. Labeling with the anti-GFP confirmed the efficiency of transfection. HEK-MSP58-GFP were used as a negative control.



● | WB | **Western Blotting**

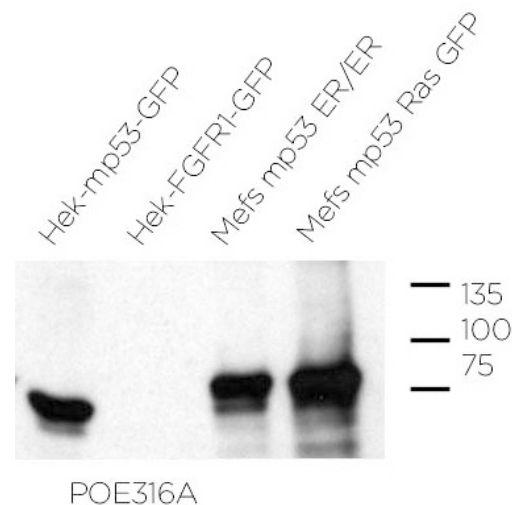
POE316A mAb is able to detect mouse p53 protein by WB.

DILUTION neat supernatant

LANES

Lane 1 Hek-mp53-GFP (30ug) (+)
 Lane 2 Hek-FGFR1-GFP (30ug) (-)
 Lane 3 Mefs mp53 ER/ER (100ug) (+)
 Lane 4 Mefs mp53 Ras GFP (100ug) (+)

Predicted molecular weight: **43kDa**
 Observed molecular weight: **43kDa**



LANES

Lane 1 KSS mouse 1 lox/lox (30ug) (-)
 Lane 2 KSS mouse 4 lox/lox (30ug) (-)
 Lane 3 KSS mouse 6 p53 +/- (30ug) (+)
 Lane 4 KSS mouse 7 lox/lox (30ug) (-)
 Lane 5 KNR1 mouse+CRE (30ug) (+)
 Lane 6 KNR1 mouse+CRE+shp53 (30ug) (+/-)

Predicted molecular weight: **43kDa**
 Observed molecular weight: **43kDa**

KSS Neurospheres generated from pups p53 wt or lox/lox
 KNR neurospheres p53 wt infected with shp53

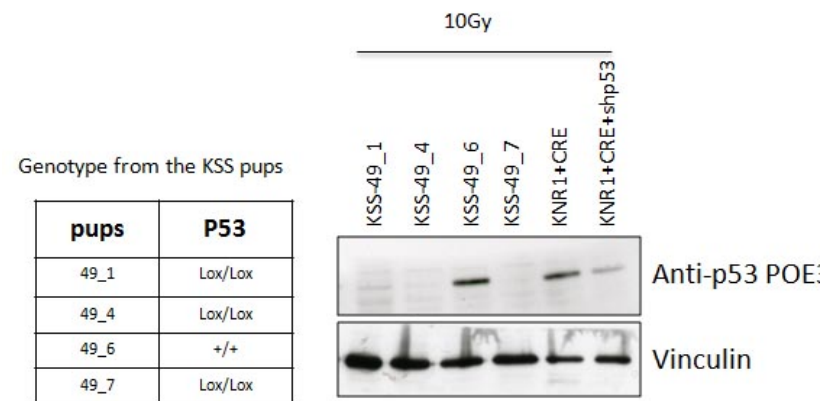


Image kindly provided by Barbara Oldrini.

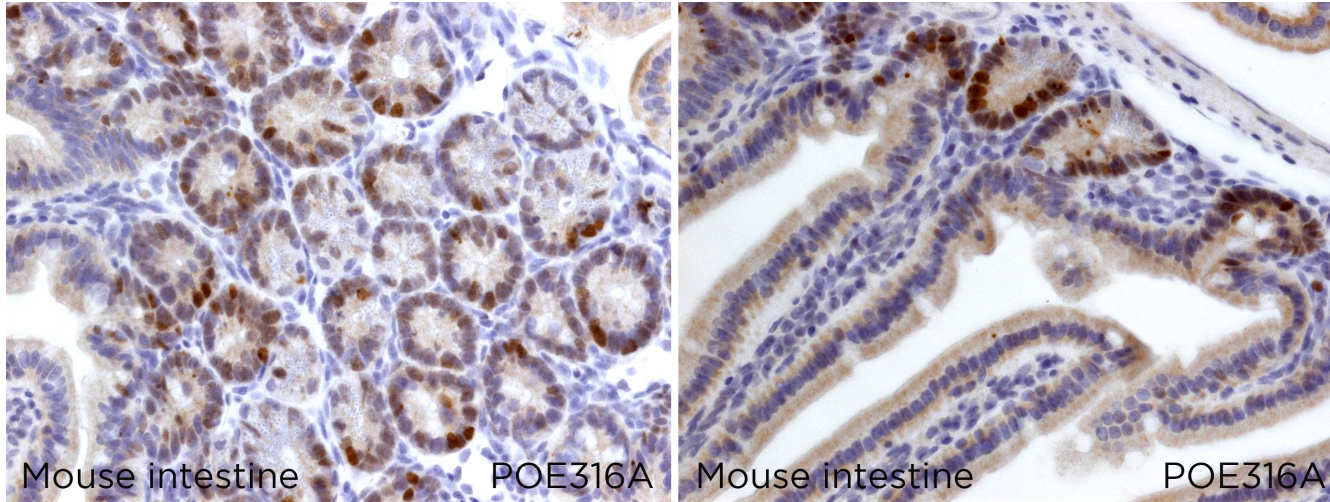
● | M-IHC-P | **Immunohistochemistry (paraffin)**

POE316A antibody can be used to detect p53 protein in human paraffin tissues.

TISSUE SAMPLE Mouse intestine.

DILUTION neat supernatant

DETECTION SYSTEM RiboCC 60min Rb Rt Biot + OR (Ventana)



● | IF | **Immunofluorescence** Not Tested

● | IP | **Immunoprecipitation** Not Tested

● | IHC-F | **Immunohistochemistry (frozen)** Not Tested

● | FC | **Flow Cytometry** Not Tested