

XCR1 | Validation File

TARGET hXCR1

CLONE NAME **CIA207A**

DESCRIPTION Rat monoclonal

ANTIGEN USED RBL1-hXCR1-MYC-DDK transfected cells and Novus biological protein N-terminal His6-ABP tag corresponding to human XCR1/CCXCR1 (NBP1-88143PEP).

ISOTYPE IgG2a

SPECIES REACTIVITY human

LOCALIZATION cell membrane

POSITIVE CONTROL Tonsil, Spleen and Thymus

STORAGE BUFFER Tissue culture supernatant: 0.02% sodium azide

Purified antibody: PBS plus 1%BSA and 0.02% sodium azide. MAb concentration: 1mg/ml

STORAGE Aliquot and store at 4C. Do not freeze



Recommended



Inconclusive



Not Recommended



Not Tested

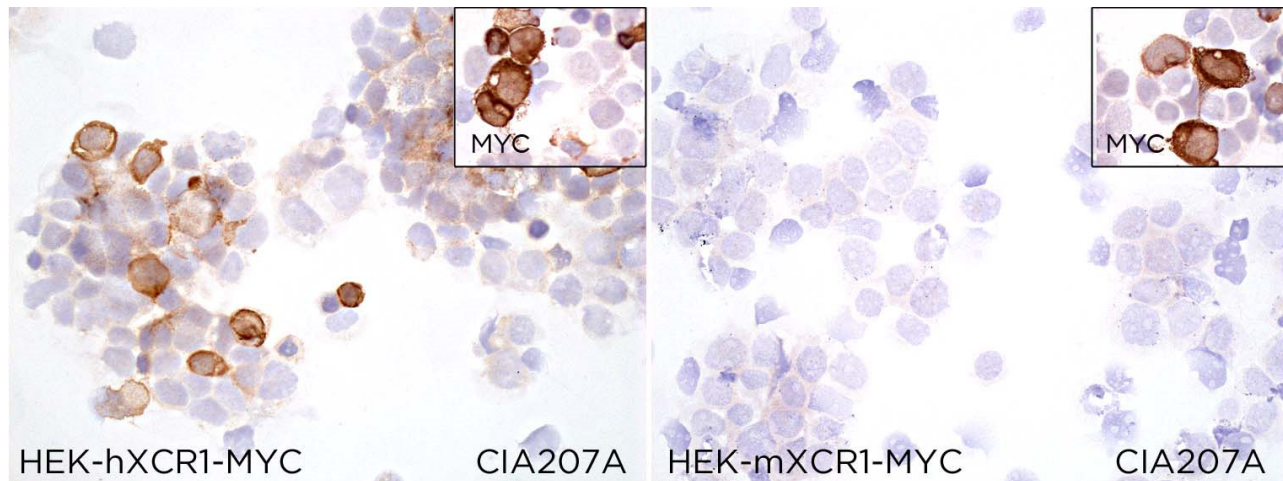
APPLICATIONS

● | ICC | *Immunocytochemistry*

CIA207A is able to detect human XCR1 protein in immunocytochemistry

DILUTION Neat supernatant

To confirm that CIA207A mAb recognizes human XCR1 protein, immunocytochemistry on frozen cytospin preparations of hXCR1 and mXCR1 expressed in HEK293 cell line was performed. Anti Myc antibody was used as positive control.



● | IHC-P | **Immunohistochemistry (paraffin)**

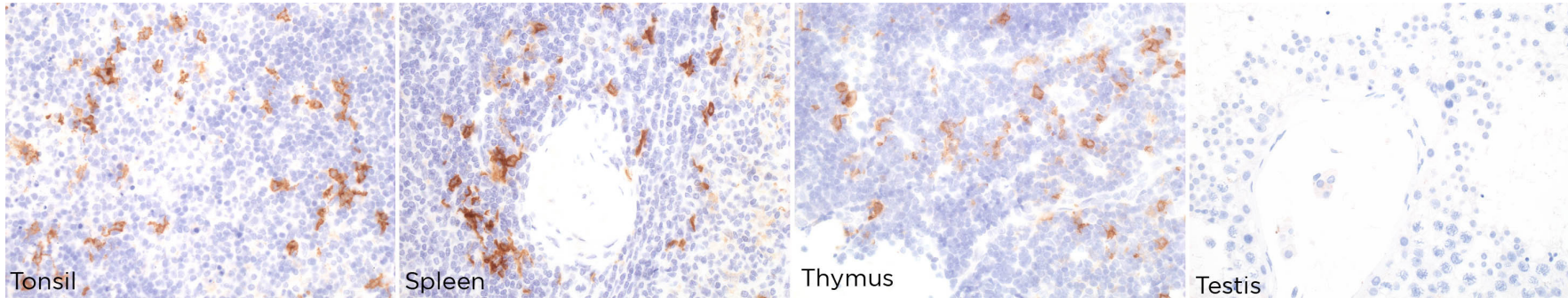
CIA207A mAb can be used to detect XCR1 protein in human paraffin tissues

TISSUE SAMPLE Tonsil, Spleen, Thymus and Testis

DILUTION 1:80 supernatant

ANT. RETRIEVAL 20 minutes ER2 (Tris-EDTA)

DETECTION SYSTEM Novolink kit (BondMax Leica)



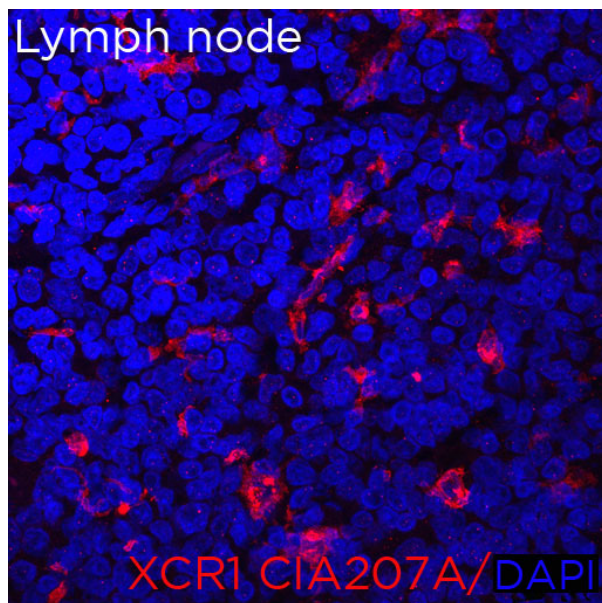
● | IF | **Immunofluorescence (paraffin)**

CIA207A mAb can be used to detect XCR1 protein by immunofluorescence

TISSUE SAMPLE Lymph node (dendritic cells)

DILUTION Neat supernatant

ANT RETRIEVAL 20 minutes ER2 (Tris-EDTA)



● | WB | **Western Blotting** Not working

● | IHC-F | **Immunohistochemistry (frozen)** Not working

● | FC | **Flow Cytometry** Not working

● | IP | **Immunoprecipitation** Not Tested