

TRAT1 | Validation File

TARGET TRAT1 (T-cell receptor-associated transmembrane adapter 1)

CLONE NAME MARTIN604A

DESCRIPTION Rat monoclonal

ANTIGEN USED HIS-GST-TRAT1 (29-186end)

ISOTYPE IgG2a, K

SPECIES REACTIVITY human

LOCALIZATION Membrane

POSITIVE CONTROL Human tonsil

STORAGE BUFFER Tissue culture supernatant: 0.02% sodium azide

Purified antibody: PBS plus 1%BSA and 0.02% sodium azide. MAb concentration: 1mg/ml

STORAGE Aliquot and store at 4C. Do not freeze



Recommended



Inconclusive



Not Recommended



Not Tested

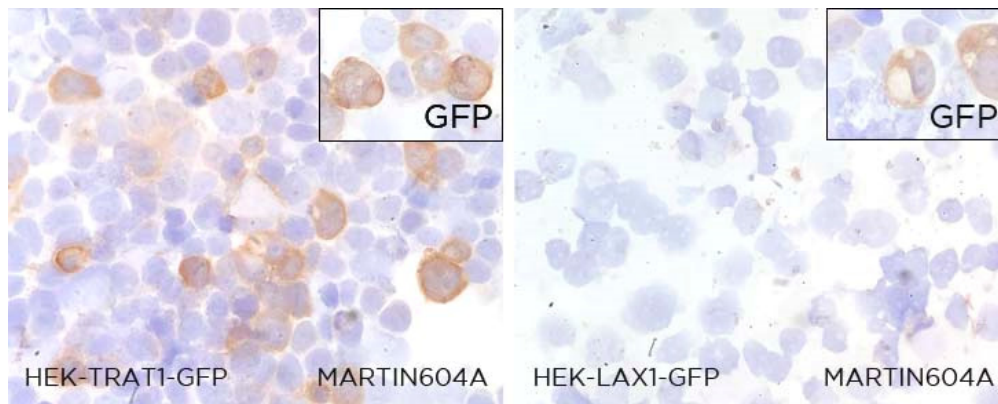
APPLICATIONS

● | ICC | *Immunocytochemistry*

MARTIN604A is able to detect human TRAT1 protein in immunocytochemistry

DILUTION Neat supernatant

To confirm that MARTIN604A mAb recognizes human TRAT1 protein, immunocytochemistry on frozen cytospin preparations of TRAT1-GFP tagged were done. HEK-LAX1-GFP transfected cell line was used as negative control.



● | WB | **Western Blotting**

MARTIN604A is able to detect human TRAT1 protein by WB.

DILUTION Neat supernatant

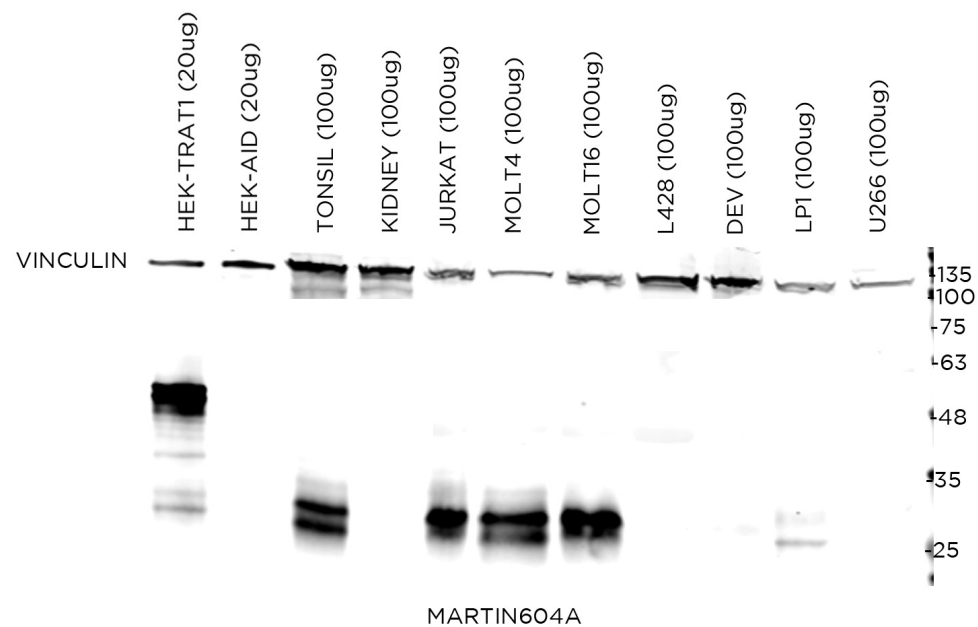
Predicted molecular weight: **21KDa**

Observed molecular weight: **30kDa**

LANES

Lane 1 HEK-TRAT1-GFP (8ug)
 Lane 21 HEK-AID-HA (8ug)
 Lane 3 Tonsil (100ug)
 Lane 4 Kidney (100ug)
 Lane 5 JURKAT cell line (100ug)
 Lane 6 MOLT4 cell line (100ug)
 Lane 7 MOLT16 cell line (100ug)
 Lane 8 L428 cell line (100ug)
 Lane 9 DEV cell line (100ug)
 Lane 10 LP1 cell line (100ug)
 Lane 11 U266 cell line (100ug)

Anti-Vinculin was used as loading control



● | IHC-P | ***Immunohistochemistry (paraffin)***

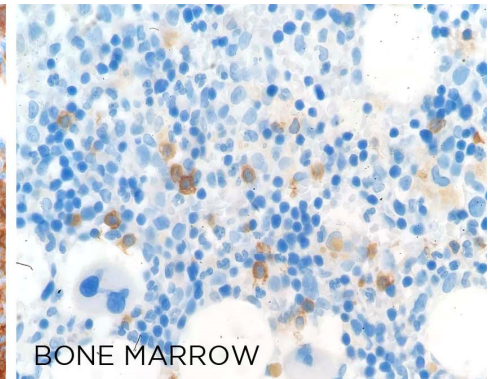
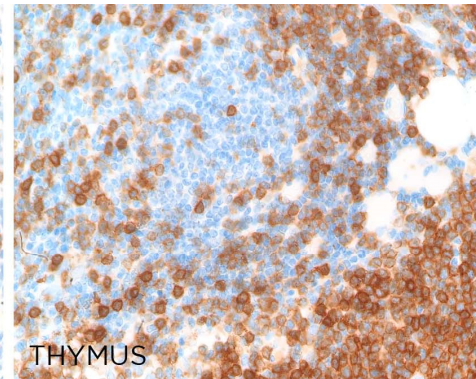
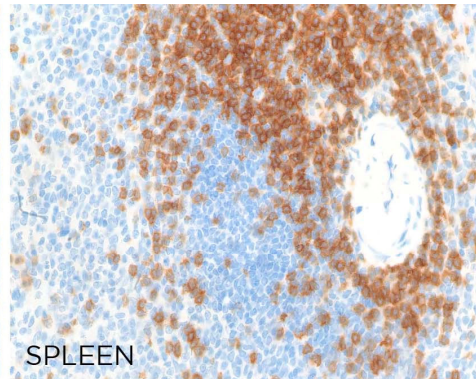
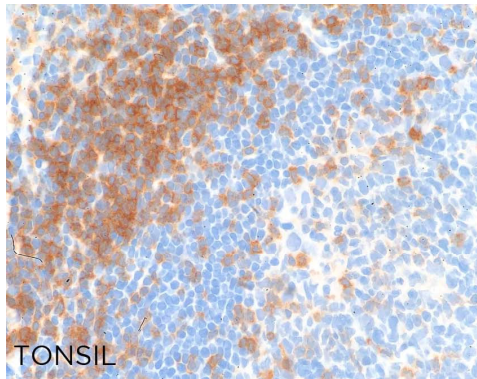
MARTIN604A mAb can be used to detect TRAT1 protein in human paraffin tissues

TISSUE SAMPLE Human tonsil, spleen, thymus and Bone marrow

DILUTION 1:30 (supernatant)

ANT. RETRIEVAL 20 minutes ER2 (Tris-EDTA)

DETECTION SYSTEM Novolink kit (BondMax Leica)



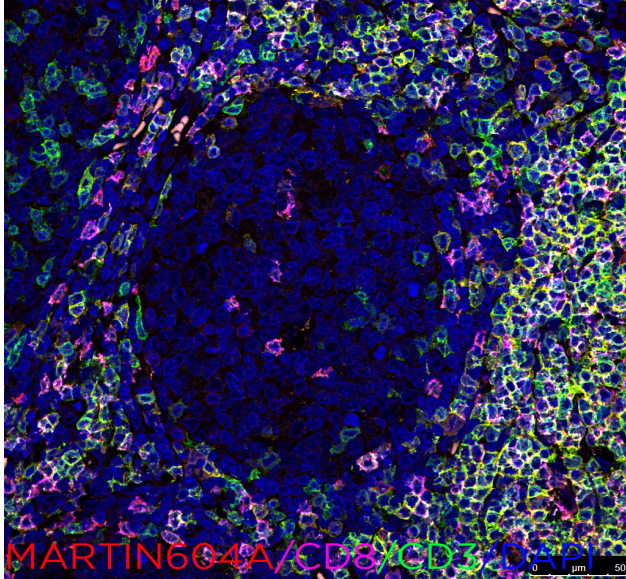
● | IF | **Immunofluorescence (paraffin)**

MARTIN604A mAb can be used to detect TRAT1 protein by immunofluorescence

TISSUE SAMPLE Human tonsil

DILUTION 1:2 supernatant/CD8 1:80/CD3 1:2

ANT. RETRIEVAL 20' EDTA

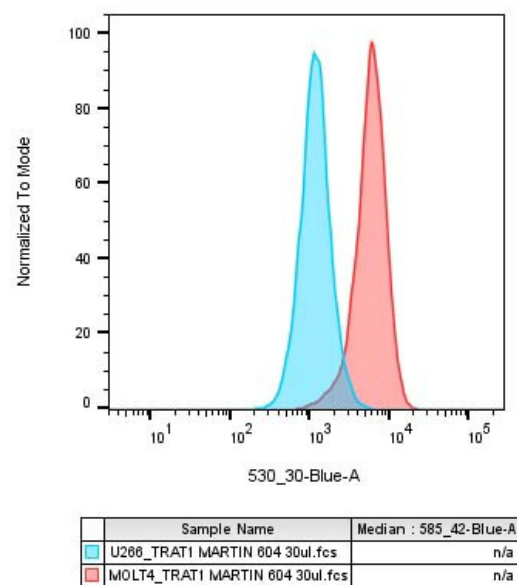


● | FC | **Flow cytometry**

MARTIN604A mAb can be used to detect TRAT1 protein by flow cytometry

SAMPLE Human Molt4 cell line (+) and human U266 cell line (-),

DILUTION supernatant 30ul/100ul



● | IHC-F | **Immunohistochemistry (frozen)**

● | IP | **Immunoprecipitation** Not Tested