

TIMP2/TIMP3 | Validation File

TARGET mTIMP3

CLONE NAME PICO680

DESCRIPTION mouse monoclonal

ANTIGEN USED HIS-MBP-mTIMP3 (full length protein)

ISOTYPE IgG2a

SPECIES REACTIVITY human and mouse

LOCALIZATION cytoplasm

POSITIVE CONTROL Tonsil

STORAGE BUFFER Tissue culture supernatant: 0.02% sodium azide

STORAGE Aliquot and store at 4C. Do not freeze

 Recommended

 Inconclusive

 Not Recommended

 Not Tested

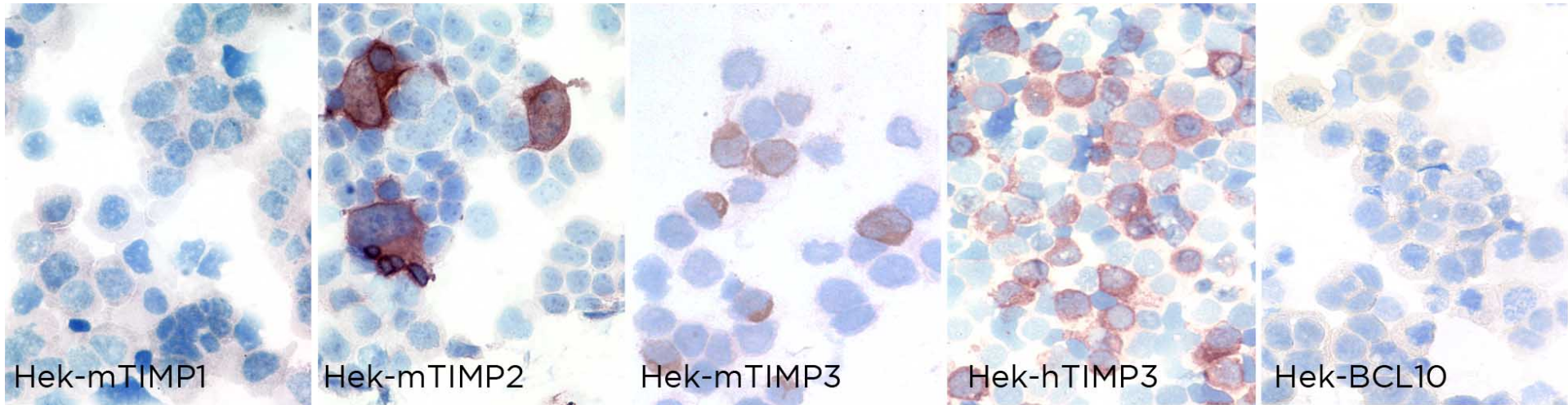
APPLICATIONS

● | ICC | Immunocytochemistry

PICO680 is able to detect human mTIMP3 protein in immunocytochemistry

DILUTION neat supernatant

To confirm that PICO680 mAb recognizes mouse and human TIMP3 and mouse TIMP2 protein, immunocytochemistry on frozen cytospin preparations of mTIMP1, mTIMP2, mTIMP3 and hTIMP3 expressed in Hek293T cell line was performed. and Cytospin preparation of human Bcl10 protein was used as a negative control.



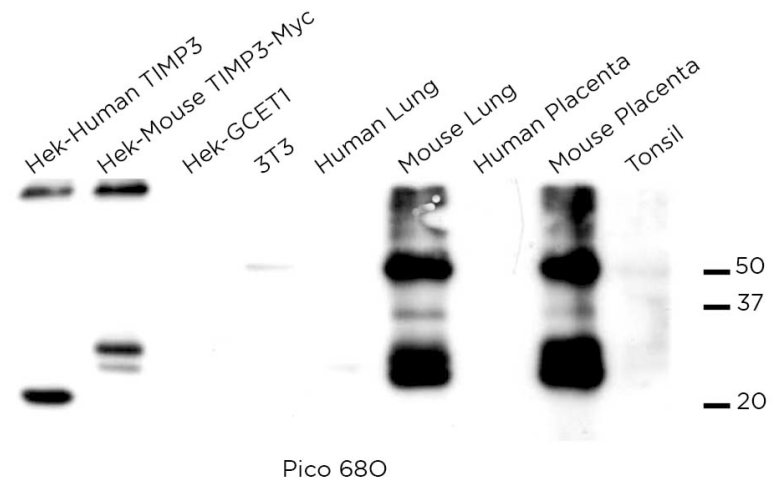
● | WB | **Western Blotting**

PICO680 mAb is able to detect mouse TIMP2-3 protein by WB.

DILUTION 1:10 (supernatant)

LANES

- Lane 1 Hek-hTIMP3 (30ug)
- Lane 2 Hek-mTIMP3 (30ug)
- Lane 3 Hek-GCET1 (100ug)
- Lane 4 3T3 (100ug)
- Lane 5 Human lung (100ug)
- Lane 6 Mouse lung (100ug)
- Lane 7 Human placenta (100ug)
- Lane 8 Mouse placenta (100ug)
- Lane 9 Tonsil (100ug)

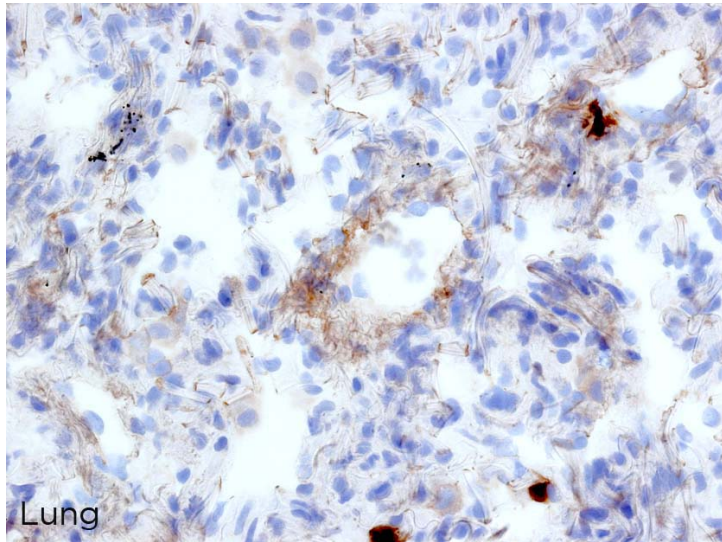


● | IHC-F | **Immunohistochemistry (frozen)**

PICO680 mAb can be used to detect TIMP2-3 protein in human frozen tissues.

TISSUE SAMPLE Human lung

DILUTION neat supernatant



● | IHC-P | **Immunohistochemistry (paraffin)**

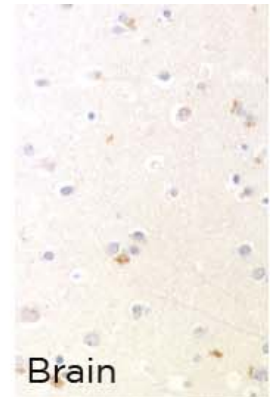
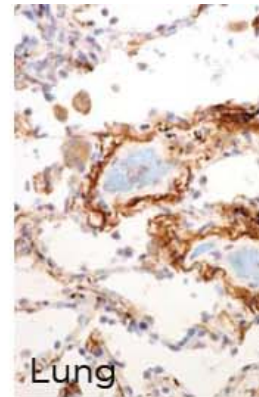
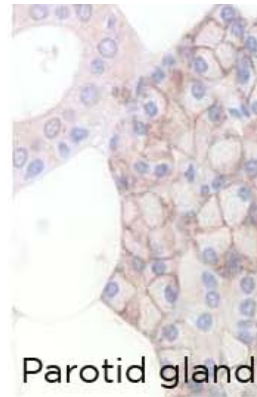
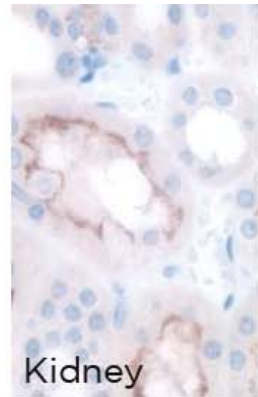
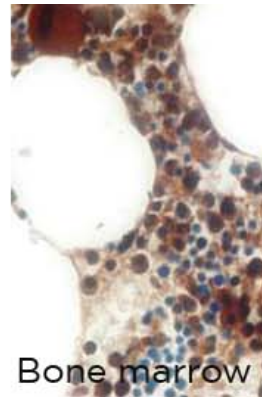
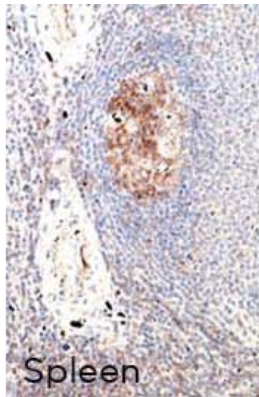
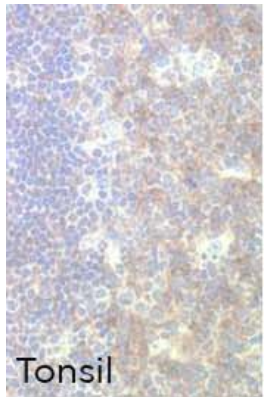
PICO680 mAb can be used to detect TIMP2-3 protein in human paraffin tissues

TISSUE SAMPLE PICO680

DILUTION 1:20 supernatant

ANT. RETRIEVAL 20 minutes ER2 (Tris-EDTA)

DETECTION SYSTEM Novolink kit (BondMax Leica)



● | IP | **Immunoprecipitation** Not Tested

● | IF | **Immunofluorescence (paraffin)** Not tested

● | FC | **Flow Cytometry** Not tested