

TET2 | Validation File

TARGET TET2 - Methylcytosine dioxygenase TET2

CLONE NAME CADA359A

DESCRIPTION mouse monoclonal

ANTIGEN USED TET2-HIS fragment (1388-2002aa) recombinant protein

ISOTYPE IgG1 lambda

SPECIES REACTIVITY human

LOCALIZATION nuclear

POSITIVE CONTROL tonsil

STORAGE BUFFER Tissue culture supernatant: 0.02% sodium azide
Purified antibody: PBS plus 1%BSA and 0.02% sodium azide. MAb concentration: 1mg/ml

STORAGE Aliquot and store at 4C. Do not freeze

 Recommended

 Inconclusive

 Not Recommended

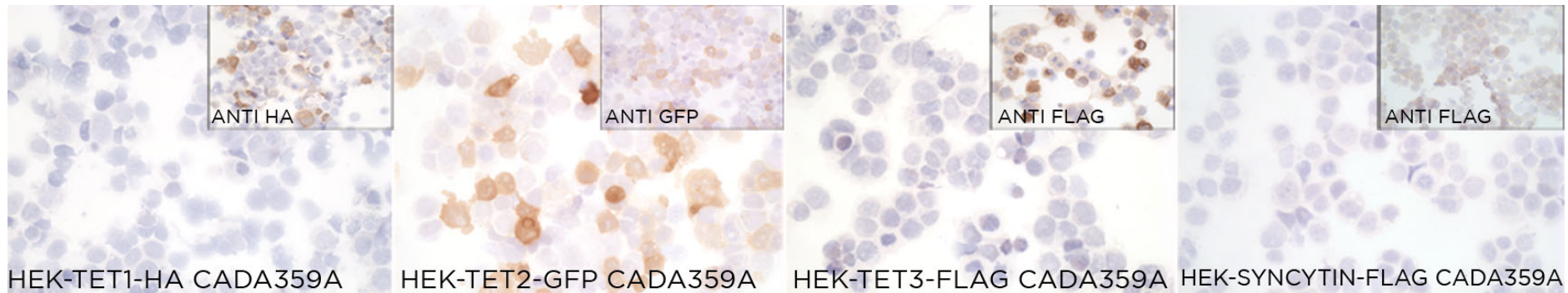
 Not Tested

APPLICATIONS

● | ICC | Immunocytochemistry

CADA359A mAb is able to detect human TET2 protein in immunocytochemistry.

To confirm that CADA359A mAb recognizes human TET2 protein, immunocytochemistry on frozen cytopins preparations of HA, GFP and FLAG-tagged human TET1, TET2 and TET3 expressed in HEK293 was performed. Anti-HA, GFP and FLAG antibodies were used as positive control. Cytospin preparation of FLAG-tagged human SYNCYTIN1 was used as a negative control.



● | IHC-P | **Immunohistochemistry (paraffin)**

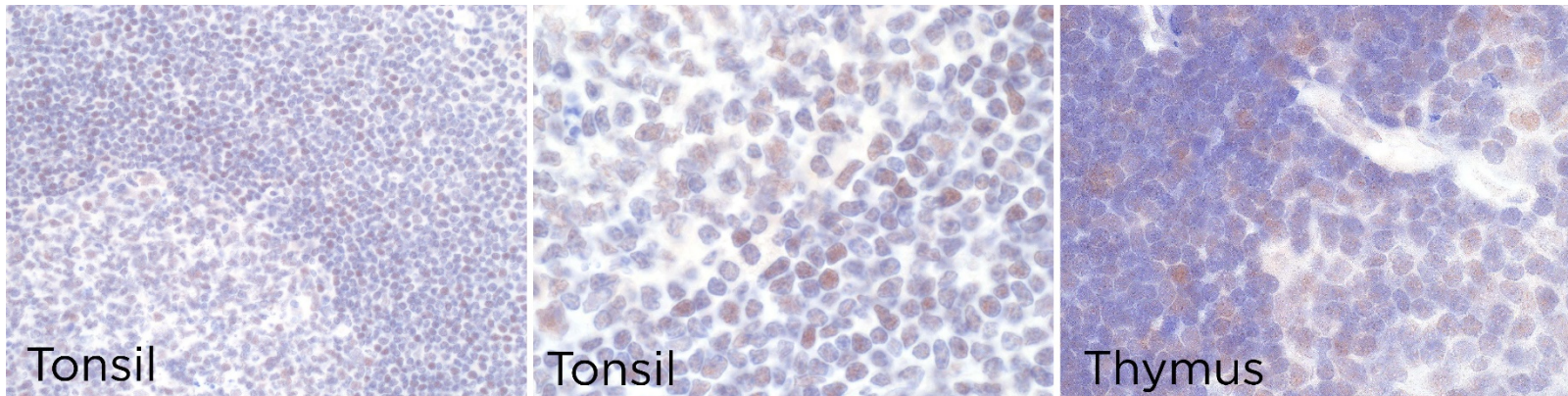
CADA359A antibody can be used to detect TET2 protein in human paraffin tissues.

TISSUE SAMPLE Human tonsil and thymus.

DILUTION 1:5 supernatant

ANTIGEN RETRIEVAL 20 minutes ER2 (Tris-EDTA)

DETECTION SYSTEM Novolink kit (BondMax Leica)



● | WB | **Western Blotting** Not tested

● | IF | **Immunofluorescence (paraffin)** Not tested

● | IHC-F | **Immunohistochemistry (frozen)** Not tested

● | M-IHC-P | **Mouse Immunohistochemistry (paraffin)** Not tested

● | IP | **Immunoprecipitation** No tested

● | FC | **Flow Cytometry** No tested