

SYNCYTIN-1 | Validation File

TARGET SYNCYTIN-1 / ERVW-1

CLONE NAME CALI222B

DESCRIPTION rat monoclonal

ANTIGEN USED HIS-GST-Syncytin-1 (116-215aa)

ISOTYPE IgG2a

SPECIES REACTIVITY human

LOCALIZATION membrane

POSITIVE CONTROL Placenta

STORAGE BUFFER Tissue culture supernatant: 0.02% sodium azide

Purified antibody: PBS plus 1%BSA and 0.02% sodium azide. MAb concentration: 1mg/ml

STORAGE Aliquot and store at 4C. Do not freeze



Recommended



Inconclusive



Not Recommended



Not Tested

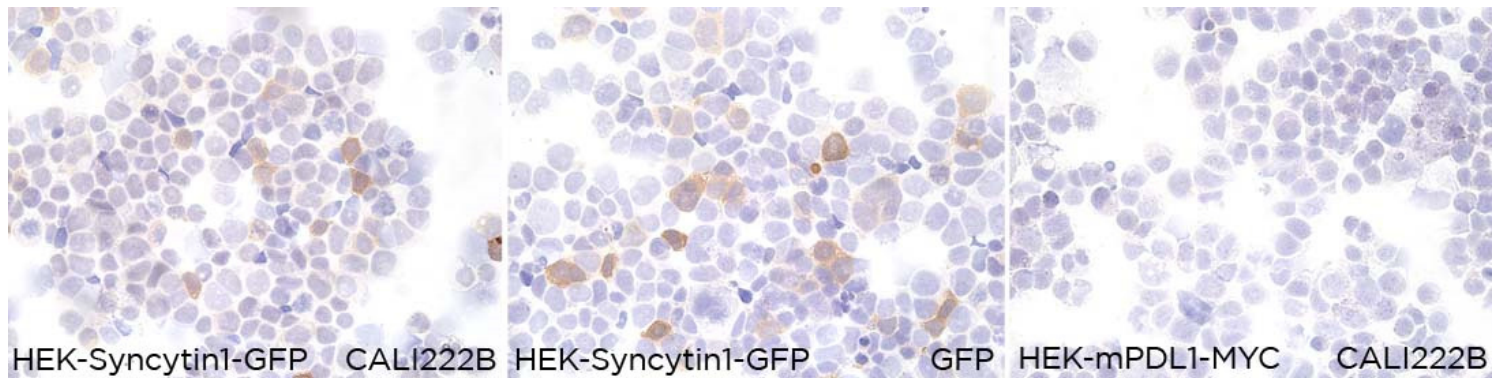
APPLICATIONS

● | ICC | *Immunocytochemistry*

CALI222B is able to detect human Syncytin-1 protein in immunocytochemistry

DILUTION neat supernatant

To confirm that CALI222B mAb recognizes human Syncytin-1 protein, immunocytochemistry on frozen cytospin preparations of GFP-tagged human Syncytin-1 (116-215aa) fragment expressed in HEK293 cell line was performed. Cytospin preparation of MYC-tagged mouse PDL1 protein was used as negative control. Anti-GFP was used as positive control.



● | WB | **Western Blotting**

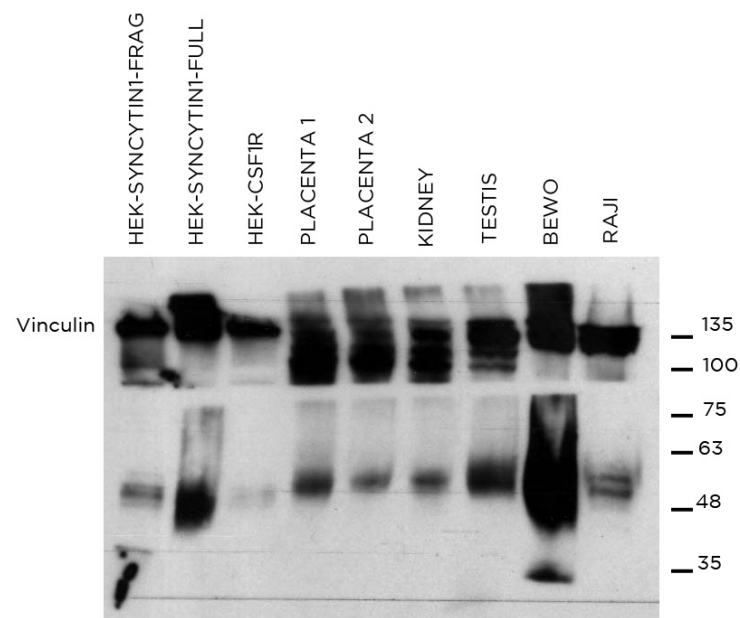
CALI222B **is not recommended** for the detection Syncytin-1 protein by WB. Further validation experiments have to be done to confirm antibody specificity in this application.

DILUTION no dilution (Neat supernatant)

Predicted molecular weight: **60kDa**
Observed molecular weight: **between 48-63kDa**

LANES

Lane 1 Hek-Syncytin-1 (116-215aa)	(20ug) (+)
Lane 2 Hek-Syncytin-1	(20ug) (+)
Lane 3 Hek-CSF1R	(20ug) (-)
Lane 4 Human Placenta 1	(100ug) (+)
Lane 5 Human Placenta 2	(100ug) (+)
Lane 6 Human Kidney	(100ug) (-)
Lane 7 Human Testis	(100ug) (-)
Lane 8 BEWO cell line	(100ug) (+)
Lane 9 RAJI cell line	(100ug) (+)



● | IHC-P | **Immunohistochemistry (paraffin)**

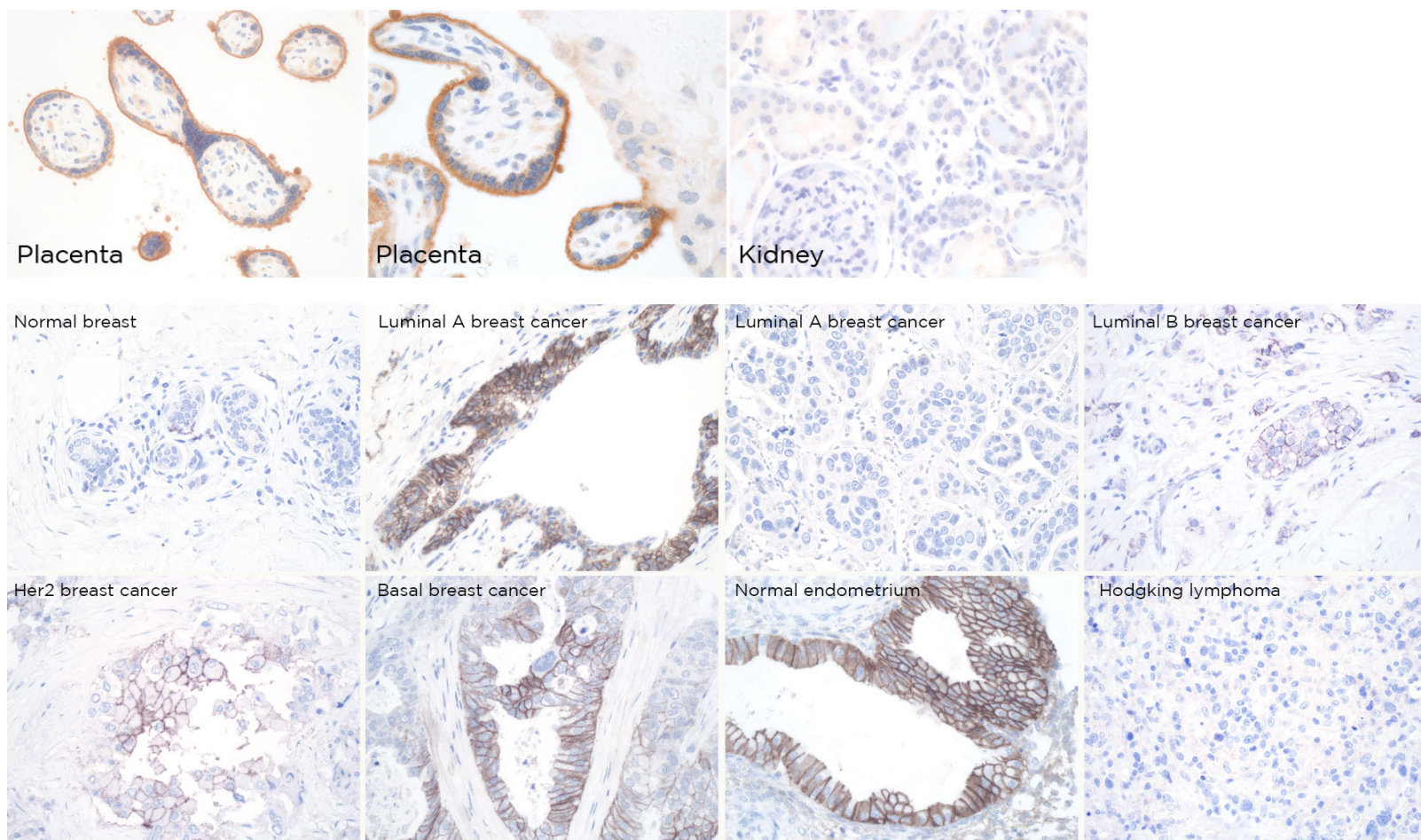
CAL1222B mAb can be used to detect Syncytin-1 protein in human paraffin tissues

TISSUE SAMPLE Human placenta, kidney, breast cancer and Hodgking lymphoma.

DILUTION no dilution (neat supernatant) or 1:300 purified mAb (1mg/ml)

ANT. RETRIEVAL 20 minutes ER2 (Tris-EDTA)

DETECTION SYSTEM Novolink kit (BondMax Leica)



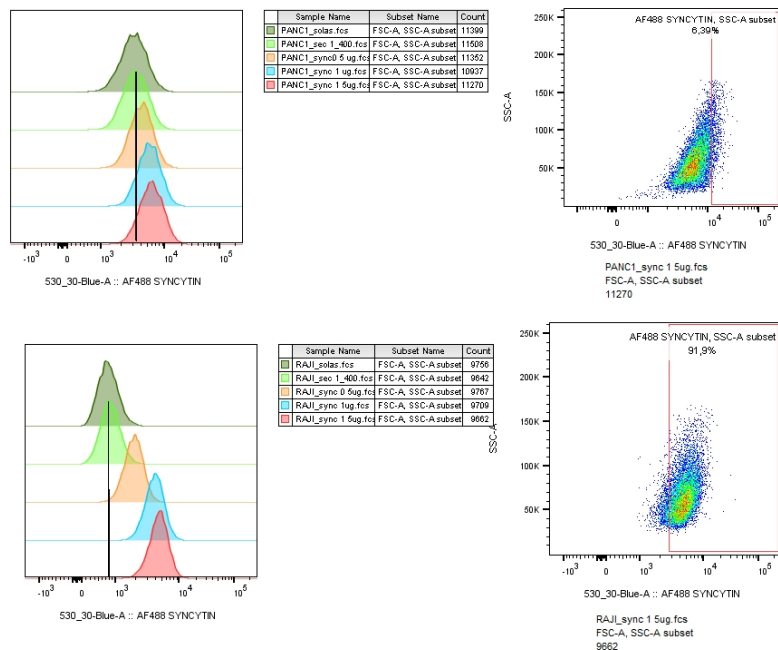
● | FC | **Flow Cytometry**

CALI222B mAb can be used to detect Syncytin-1 protein in flow cytometry technique

SAMPLES Human PANC-1 and RAJI cell lines

DILUTION 0,5ug, 1ug and 1,5ug/tube of purified antibody

SECONDARY ANTIBODY anti-rat-AF488 1:400 dilution



● | IF | **Immunofluorescence (paraffin)** Not tested

● | IP | **Immunoprecipitation** Not tested

● | IHC-F | **Immunohistochemistry (frozen)** Not Tested

REFERENCES

Silvia Pérez-Pérez, María Inmaculada Domínguez-Mozo, María Ángel García-Martínez, Rubén Ballester-González, Israel Nieto-Gañán, Rafael Arroyo, Roberto Alvarez-Lafuente. Epstein-Barr Virus Load Correlates with Multiple Sclerosis-Associated Retrovirus Envelope Expression. *Biomedicines* 2022 Feb 5;10(2):387.