

## Saa3 (mouse specific) | Validation File

**TARGET** serum amyloid A3 protein ( Saa3)

**CLONE NAME** JOR110A

**DESCRIPTION** Rat monoclonal

**ANTIGEN USED** His-mSAA3 (20-122aa) recombinant protein

**ISOTYPE** IgG2b

**SPECIES REACTIVITY** mouse

**LOCALIZATION** cytoplasm and extracellular

**POSITIVE CONTROL** mouse colon with colitis

**STORAGE BUFFER** Tissue culture supernatant: 0.02% sodium azide

Purified antibody: PBS plus 1%BSA and 0.02% sodium azide. MAb concentration: 1mg/ml

**STORAGE** Aliquot and store at 4C. Do not freeze



Recommended



Inconclusive



Not Recommended



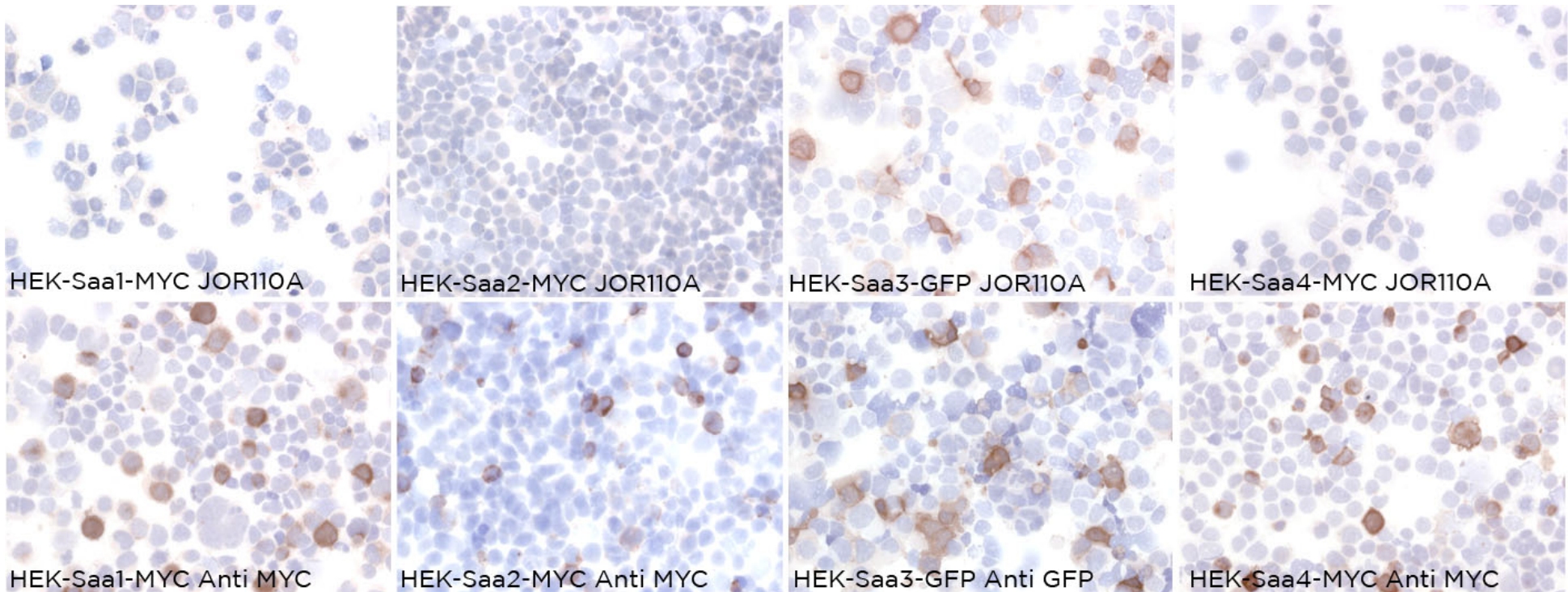
Not Tested

# APPLICATIONS

## ● | ICC | Immunocytochemistry

JOR110A is able to detect mouse Saa3 protein in immunocytochemistry

To confirm that JOR110A mAb recognizes mouse Saa3 protein, immunocytochemistry on frozen cytospin preparations of MYC-tagged mSaa3 expressed in HEK 293T cell line was performed. Cytospin preparation of HEK 293T-MYC-mSaa1, HEK 293T-MYC-mSaa2 and HEK 293T-MYC-mSaa4 transfected cells were used to confirm the specificity of the antibody.



● | WB | **Western Blotting**

JOR110A mAb is able to detect mouse Saa3 protein by WB.

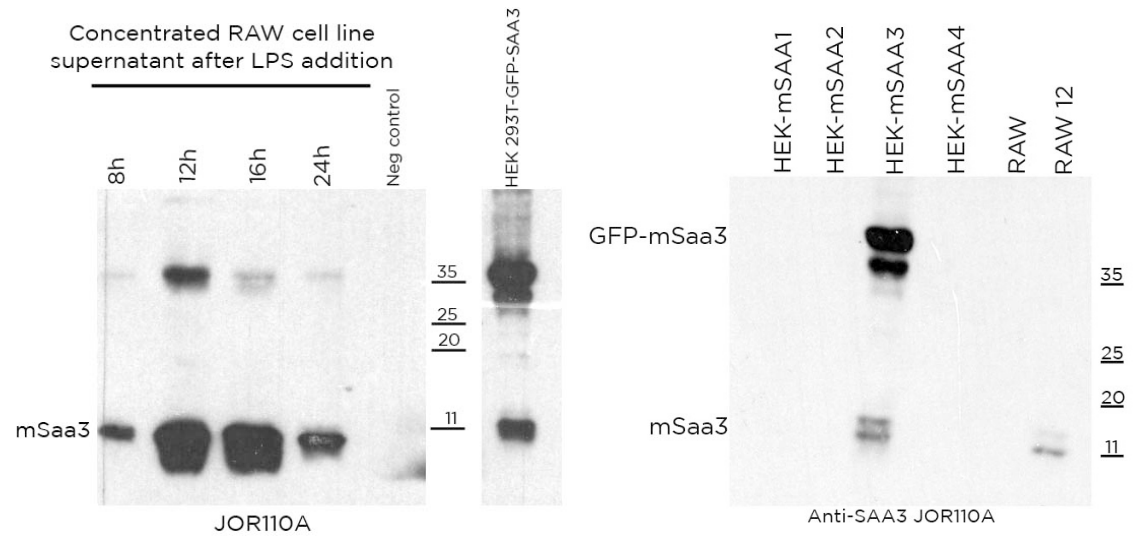
**DILUTION** neat supernatant

Since mSaa3 is a secreted protein we have collected and concentrated the supernatant from the RAW12 cell line (mouse macrophage) unstimulated (Neg control) and stimulated with LPS after 8, 12, 16 and 24 hours. A specific band of 13kDa has been detected in all activated LPS RAW12 cell with the higher expression after 12 and 16 hour stimulation. No mSaa3 protein has been detected in the supernatant of unstimulated RAW12 cell.

Predicted molecular weight: **13kDa**  
Observed molecular weight: **13kDa**

**LANES**

- |   |            |
|---|------------|
| Lane 1 RAW supernatant after 8 hours      | (20ul) (+) |
| Lane 2 RAW supernatant after 12 hours     | (20ul) (+) |
| Lane 3 RAW supernatant after 16 hours     | (20ul) (+) |
| Lane 4 RAW supernatant after 24 hours     | (20ul) (+) |
| Lane 5 RAW supernatant unstimulated       | (20ul) (-) |
| Lane 6 HEK 293TGFP-mSaa3 trasfected cells | (20ug) (+) |
|   |            |
| Lane 1 HEK-mSaa1 transfected cells        | (10ug) (-) |
| Lane 2 HEK-mSaa2 transfected cells        | (10ug) (-) |
| Lane 3 HEK-mSaa3 transfected cells        | (10ug) (+) |
| Lane 4 HEK-mSaa4 transfected cells        | (10ug) (-) |
| Lane 5 RAW supernatant unstimulated       | (20ul) (-) |
| Lane 6 RAW supernatant stimulated 12h     | (20ul) (+) |



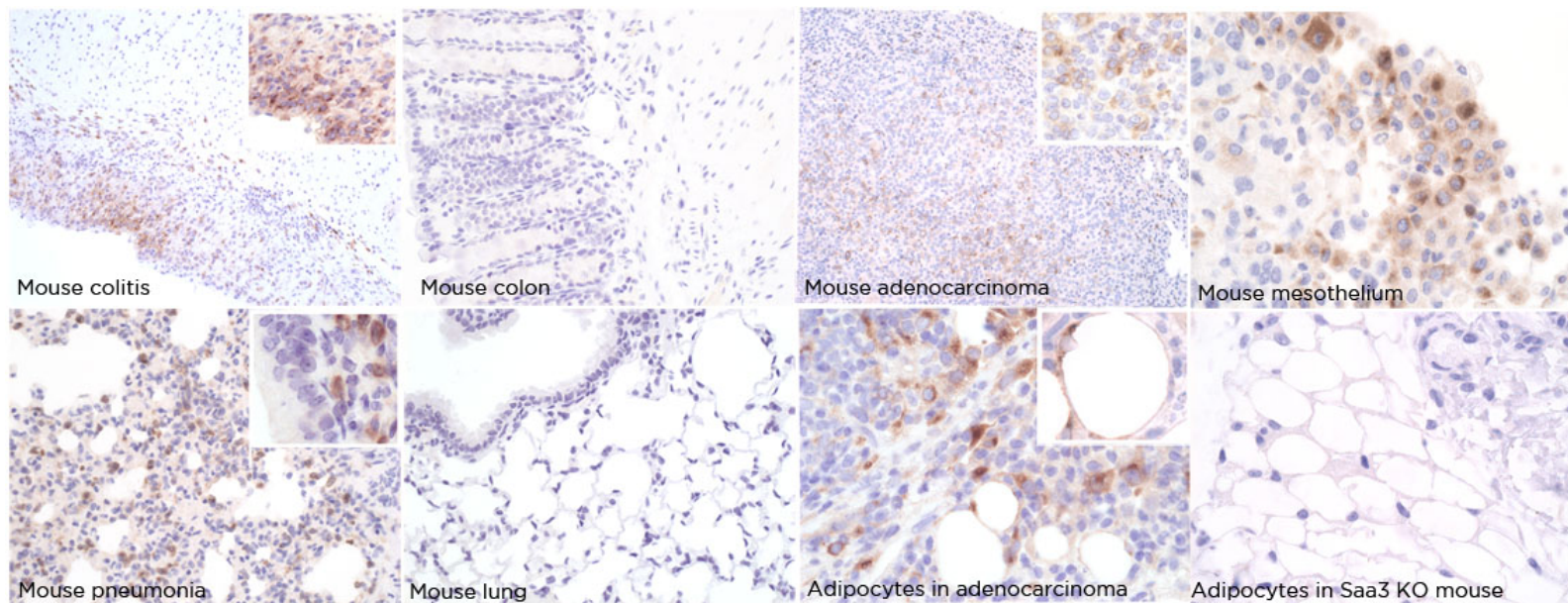
● | IHC-P | **Immunohistochemistry (paraffin)**

JOR110A mAb can be used to detect Saa3 protein in mouse paraffin tissues

**TISSUE SAMPLE** mouse colitis, mouse colon WT, mouse adenocarcinoma, mouse adenocarcinoma Saa3 KO, mouse mesothelium, mouse pneumonia mouse lung

**DILUTION** No dilution (neat supernatant)  
1:50 purified antibody

**DETECTION SYSTEM** Anti-Rat Vector+OmniMap anti-Rabbit (Ventana System)



**SOLD BY:** Abcam

● | IF | **Immunofluorescence (paraffin)** Not tested

● | IHC-F | **Immunohistochemistry (frozen)** Not tested

● | FC | **Flow Cytometry** Not tested