

PSF3 | Validation File

TARGET PSF3/GINS3 (DNA replication complex GINS protein PSF3)

CLONE NAME 40E

DESCRIPTION mouse monoclonal

ANTIGEN USED GINS complex-HIS

ISOTYPE IgG1

SPECIES REACTIVITY human

LOCALIZATION nuclear

POSITIVE CONTROL HeLa cell line

STORAGE BUFFER Tissue culture supernatant: 0.02% sodium azide

STORAGE Aliquot and store at 4C. Do not freeze

 Recommended

 Inconclusive

 Not Recommended

 Not Tested

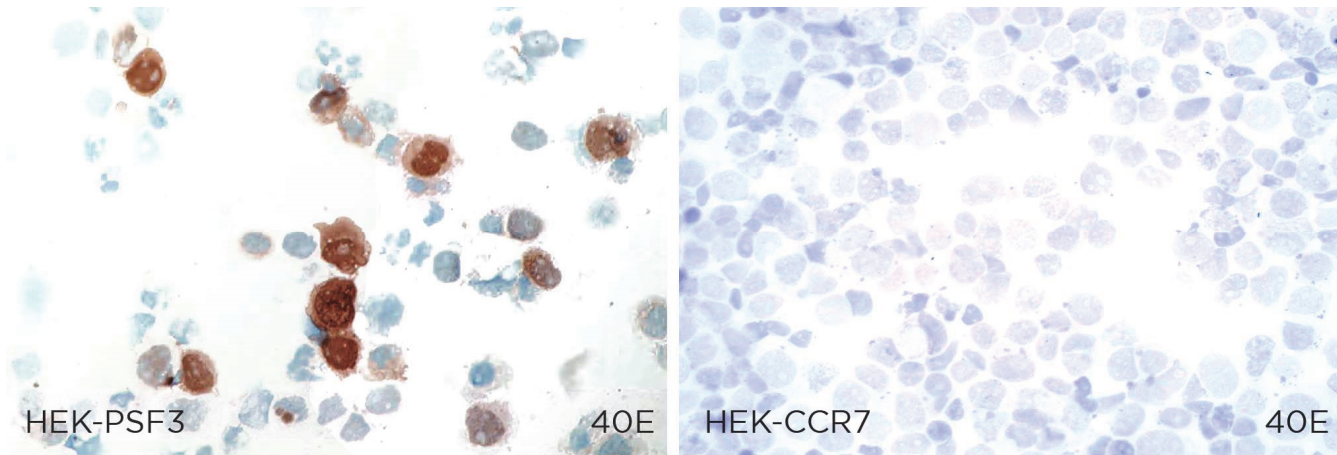
APPLICATIONS

● | ICC | *Immunocytochemistry*

40E mAb is able to detect human PSF3 protein in immunocytochemistry

DILUTION neat supernatant

To confirm that 40E mAb recognizes human PSF3 protein, immunocytochemistry on frozen cytospin preparations of human PSF3 expressed in HEK293 cell line was performed. Cytospin preparation of human CCR7 was used as a negative control.



● | WB | **Western Blotting**

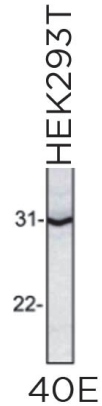
40E mAb is able to detect human PSF3 protein in western blott

DILUTION neat supernatant

Predicted molecular weight: **24kDa**
Observed molecular weight: **31kDa**

LANES

Lane 1 HEK293T cell line (100ug) (+)



- | IHC-F | **Immunohistochemistry (frozen)** Not tested
- | IHC-P | **Immunohistochemistry (paraffin)** Not tested
- | IF | **Immunofluorescence (paraffin)** Not tested
- | FC | **Flow Cytometry** Not tested
- | IP | **Immunoprecipitation** Not Tested

REFERENCES

Aparicio T, Guillou E, Coloma J, Montoya G and Méndez J. The GINS complex interacts with Cdc45 and MCM proteins and is essential for S phase progression in human cells. *Nucleic Acids Res.* 2009 Apr;37(7):2087-95.