

PSF2 | Validation File

TARGET PSF2/GINS2 (DNA replication complex GINS protein PSF2)

CLONE NAME 78C

DESCRIPTION mouse monoclonal

ANTIGEN USED GINS complex-HIS

ISOTYPE IgG2a

SPECIES REACTIVITY human


LOCALIZATION nuclear

POSITIVE CONTROL HeLa cell line

STORAGE BUFFER Tissue culture supernatant: 0.02% sodium azide

STORAGE Aliquot and store at 4C. Do not freeze

 Recommended

 Inconclusive

 Not Recommended

 Not Tested

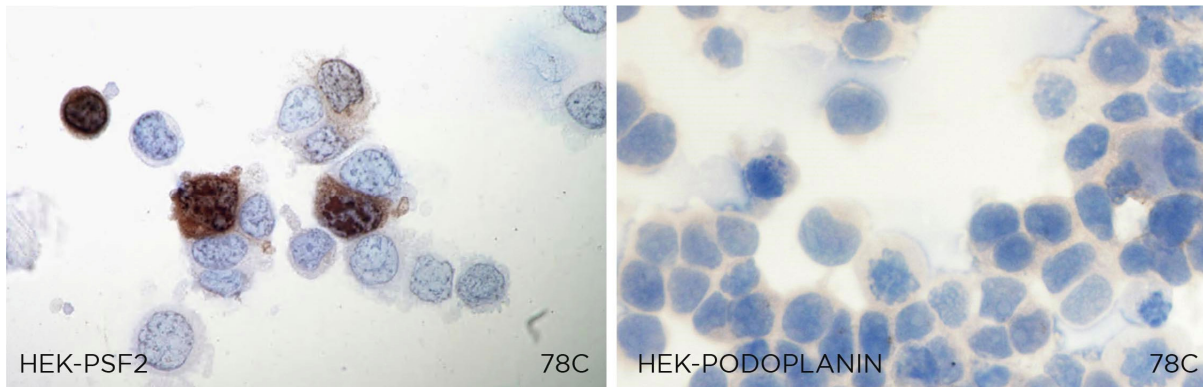
APPLICATIONS

● | ICC | *Immunocytochemistry*

78C mAb is able to detect human PSF2 protein in immunocytochemistry

DILUTION neat supernatant

To confirm that 78C mAb recognizes human PSF2 protein, immunocytochemistry on frozen cytospin preparations of human PSF2 expressed in HEK293 cell line was performed. Cytospin preparation of human PODOPLANIN protein was used as a negative control.

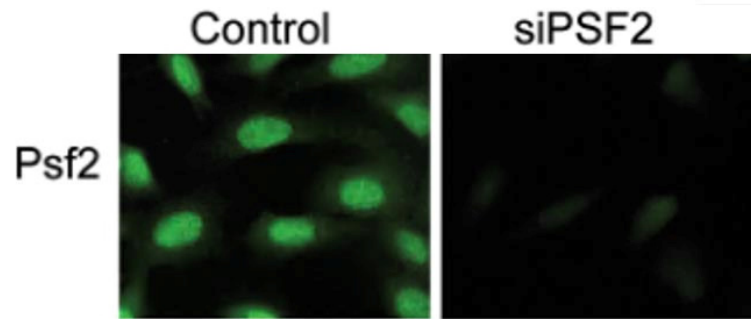


● | IF | **Immunofluorescence (paraffin)**

78C mAb is able to detect PSF2 protein in human cell lines.

SAMPLE HeLa cell line treated with control or PSF2 siRNA molecules.

DILUTION neat supernatant



● | WB | **Western Blotting** Not tested

● | IHC-F | **Immunohistochemistry (frozen)** Not tested

● | IHC-P | **Immunohistochemistry (paraffin)** Not tested

● | IF | **Immunofluorescence (paraffin)** Not tested

● | FC | **Flow Cytometry** Not tested

● | IP | **Immunoprecipitation** Not Tested

REFERENCES

Aparicio T, Guillou E, Coloma J, Montoya G and Méndez J. The GINS complex interacts with Cdc45 and MCM proteins and is essential for S phase progression in human cells. *Nucleic Acids Res.* 2009 Apr;37(7):2087-95.