

## PLK5 | Validation File

**TARGET** PLK5 (Polo-like kinase 5)

**CLONE NAME** MUSE286C

**DESCRIPTION** mouse monoclonal

**ANTIGEN USED** HIS-GST-hPLK5 full length protein

**ISOTYPE** IgG1

**SPECIES REACTIVITY** human and mouse

**LOCALIZATION** cytoplasmic in human and nuclear in mice

**POSITIVE CONTROL** nervous system

**STORAGE BUFFER** Tissue culture supernatant: 0.02% sodium azide

**STORAGE** Aliquot and store at 4C. Do not freeze



Recommended



Inconclusive



Not Recommended



Not Tested

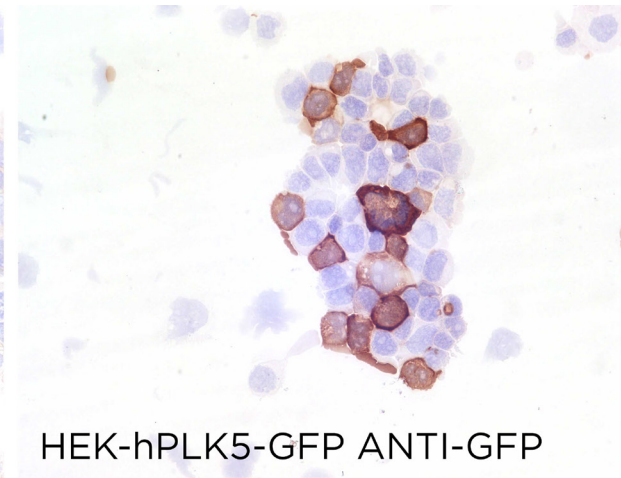
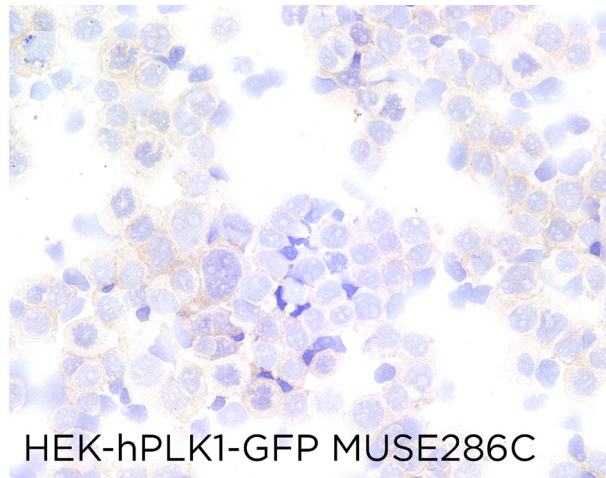
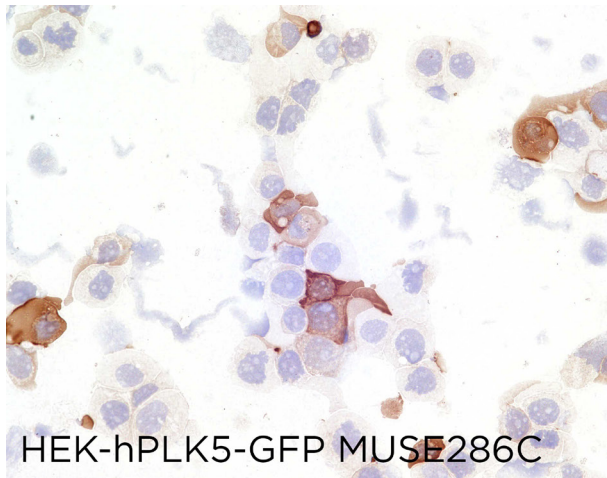
# APPLICATIONS

## ● | ICC | Immunocytochemistry

MUSE286C mAb is able to detect human PLK5 protein in immunocytochemistry

**DILUTION** no dilution (neat supernatant)

To confirm that MUSE286C mAb recognizes human PLK5 protein, immunocytochemistry on frozen cytospin preparations of GFP-tagged human PLK5 expressed in HEK293 was performed. Cytospin preparation of human GFP-tagged human PLK1 protein was used as a negative control. Labeling with the anti-GFP antibody confirmed transfection efficiency.



● | WB | **Western Blotting**

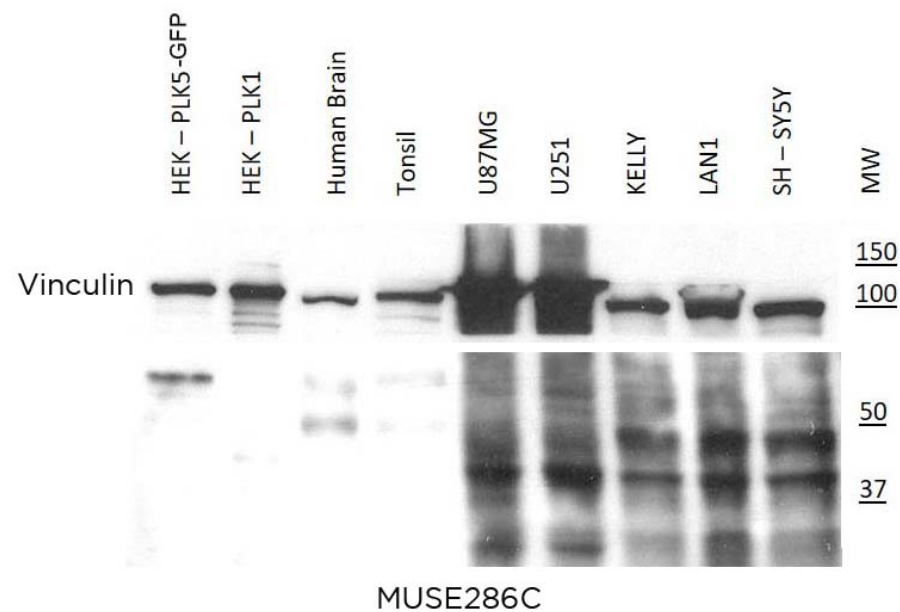
MUSE286C mAb is able to detect mouse and human PLK5 protein by WB.

**DILUTION** no dilution (neat supernatant).

Predicted molecular weight: **36kDa**  
Observed molecular weight: **>37kDa**

**LANES**

Lane 1	HEK-PLK5-GFP	(15ug) (+)
Lane 2	HEK-PLK1	(15ug) (-)
Lane 3	Human brain	(100ug) (+)
Lane 4	Human tonsil	(100ug) (-)
Lane 5	U87MG cell line	(100ug) (+)
Lane 6	U251 cell line	(100ug) (+)
Lane 7	KELLY cell line	(100ug) (+)
Lane 8	LAN1 cell line	(100ug) (+)
Lane 9	SH-SY5Y cell line	(100ug) (+)



● | IHC-P | **Immunohistochemistry (paraffin)**

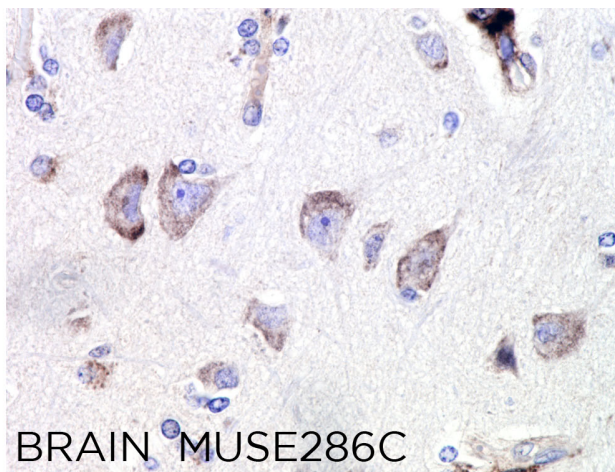
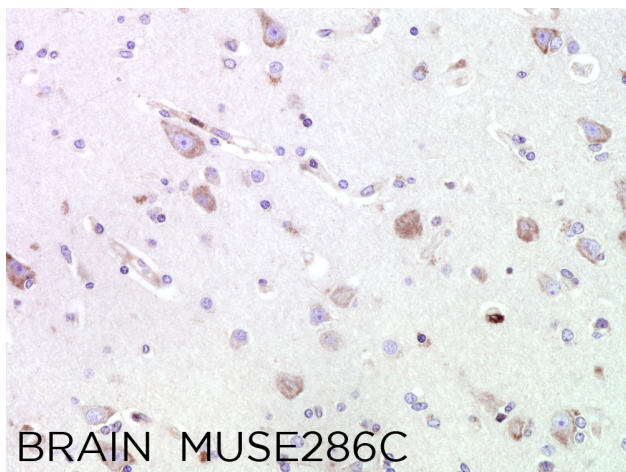
MUSE286C mAb can be used to detect PLK5 protein in human paraffin tissues

**TISSUE SAMPLE** Human brain

**DILUTION** neat supernatant

**ANTIGEN RETRIEVAL** Tris-EDTA

**DETECTION SYSTEM** Novolink kit (BondMax Leica)



● | IF | **Immunofluorescence (paraffin)** Not tested

● | IP | **Immunoprecipitation** Not tested

● | IHC-F | **Immunohistochemistry (frozen)** Not tested

● | FC | **Flow cytometry** Not tested