

hPIGR | Validation File

TARGET Polymeric immunoglobulin receptor (PIGR)

CLONE NAME TESS140C

DESCRIPTION Rat monoclonal

ANTIGEN USED RBL1-hPIGR-MYC-DDK transfected cells and the last booster with rhPIGR R&D protein 2717-PG

ISOTYPE IgG2b, kappa

SPECIES REACTIVITY human

LOCALIZATION cell membrane

POSITIVE CONTROL Human appendix

STORAGE BUFFER Tissue culture supernatant: 0.02% sodium azide

Purified antibody: PBS plus 1%BSA and 0.02% sodium azide. MAb concentration: 1mg/ml

STORAGE Aliquot and store at 4C. Do not freeze



Recommended



Inconclusive



Not Recommended



Not Tested

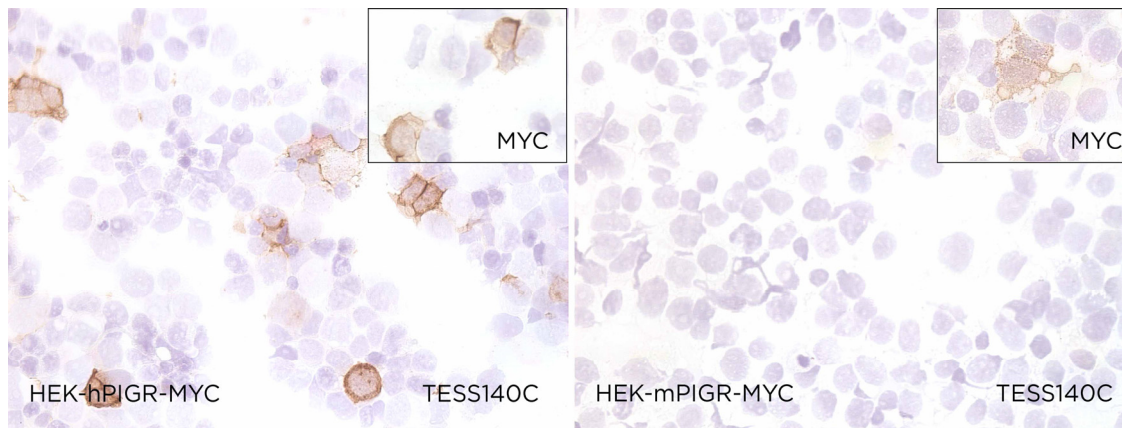
APPLICATIONS

● | ICC | *Immunocytochemistry*

TESS140C is able to detect human PIGR protein in immunocytochemistry

DILUTION Neat supernatant

To confirm that TESS140C mAb recognizes human PIGR protein but not mPIGR, immunocytochemistry on frozen cytospin preparations of hPIGR and mPIGR MYC tagged were done. Anti-MYC was used as transfection control.



● | WB | **Western Blotting**

TESS140C is able to detect human PIGR protein by WB.

DILUTION Neat supernatant

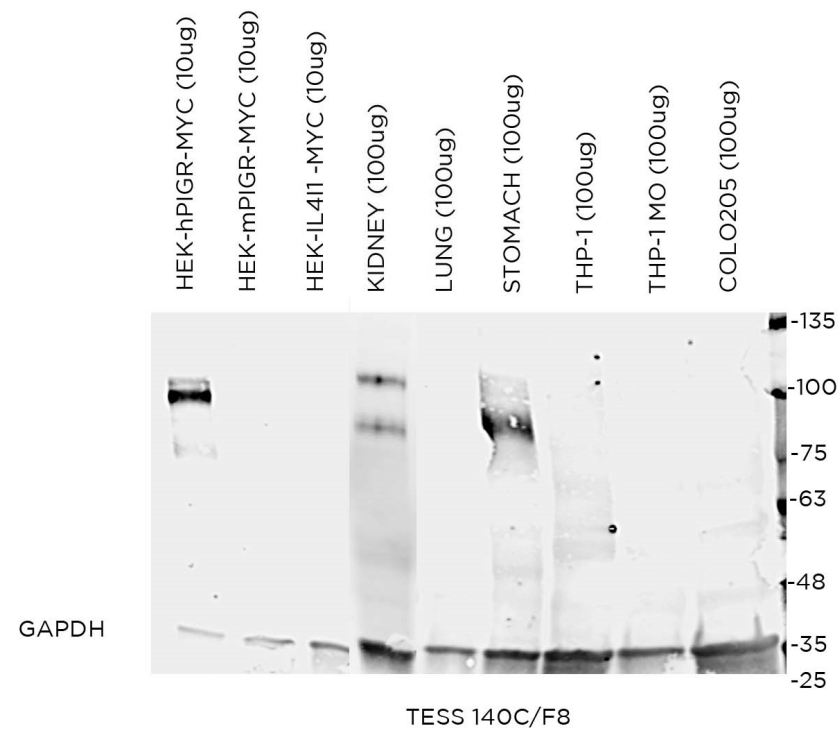
Predicted molecular weight: **83KDa**

Observed molecular weight: **83kDa**

LANES

Lane 1	HEK-hPIGR-MYC	(10ug)
Lane 2	HEK-mPIGR-MYC	(10ug)
Lane 3	HEK-IL4I1-MYC	(100ug)
Lane 4	Human kidney	(100ug)
Lane 5	Human lung	(100ug)
Lane 6	Human stomach	(100ug)
Lane 7	THP-1 cell line	(100ug)
Lane 8	THP-1 MO (macrophages)	(100ug)
Lane 9	COLO205 cell line	(100ug)

Anti-GAPDH was used as loading control



● | IHC-P | **Immunohistochemistry (paraffin)**

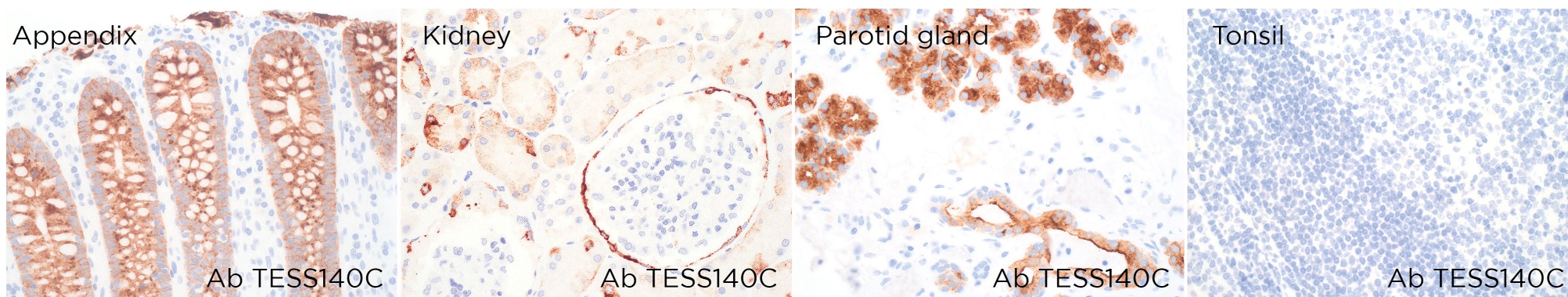
TESS140C mAb can be used to detect PIGR protein in human paraffin tissues

TISSUE SAMPLE Human appendix, kidney, parotid gland and tonsil

DILUTION neat supernatant

ANT. RETRIEVAL 20 minutes ER2 (Tris-EDTA)

DETECTION SYSTEM Novolink kit (BondMax Leica)



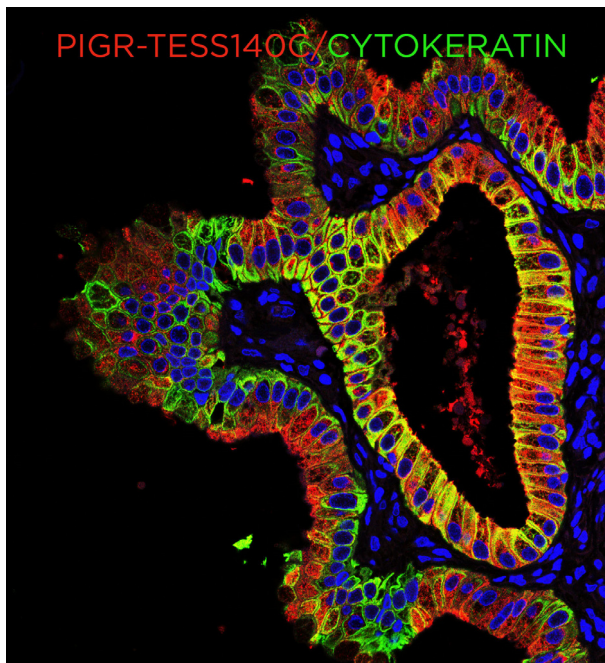
● | IF | **Immunofluorescence (paraffin)**

TESS140C mAb can be used to detect hPIGR protein by immunofluorescence

TISSUE SAMPLE Human epithelium

DILUTION 1:2 (supernatant) and Cytokeratin 1:2 (AE1/AE3)

ANT. RETRIEVAL 20 minutes ER2 (Tris-EDTA)



INMUNOTERAPIA DEL CANCER

● | IHC-F | **Immunohistochemistry (frozen)** Not tested

● | FC | **Flow cytometry** Not tested

● | IP | **Immunoprecipitation** Not Tested