

PDGFB | Validation File

TARGET PDGFB (Platelet derived growth factor, B chain)

CLONE NAME 326A

DESCRIPTION Rat monoclonal

ANTIGEN USED His-GST-PDGFB recombinant full length protein

ISOTYPE IgG2b

SPECIES REACTIVITY human

LOCALIZATION cytoplasm

POSITIVE CONTROL kidney

STORAGE BUFFER Tissue culture supernatant: 0.02% sodium azide

STORAGE Aliquot and store at 4C. Do not freeze

 Recommended

 Inconclusive

 Not Recommended

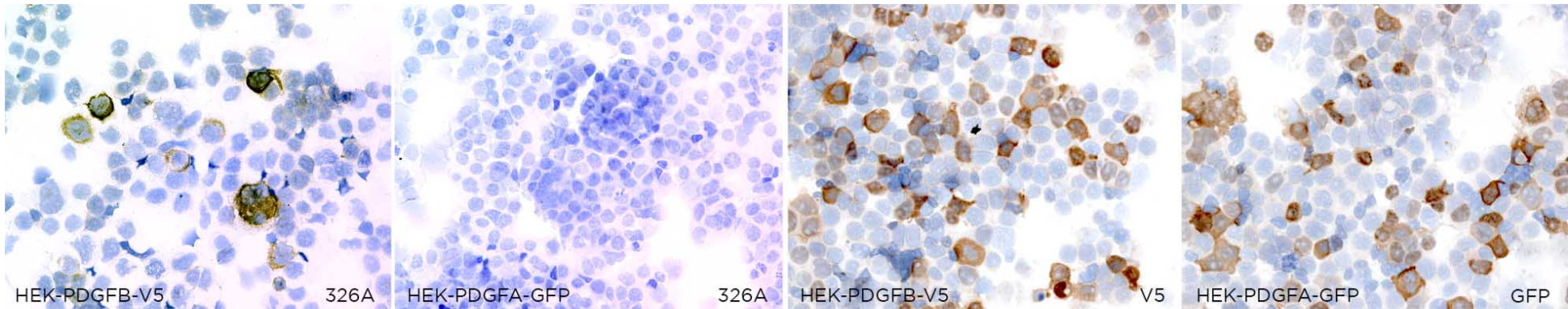
 Not Tested

APPLICATIONS

● | ICC | Immunocytochemistry

326A mAb is able to detect human PDGFB protein in immunocytochemistry

To confirm that 326A mAb recognizes human PDGFB protein, immunocytochemistry on frozen cytospin preparations of V5-tagged PDGFB expressed in HEK293 cell line was performed. Cytospin preparation of PDGFA-GFP transfected cells was used as negative control. Anti-V5 and Anti-GFP antibodies were used as positive control.



● | WB | Western Blotting

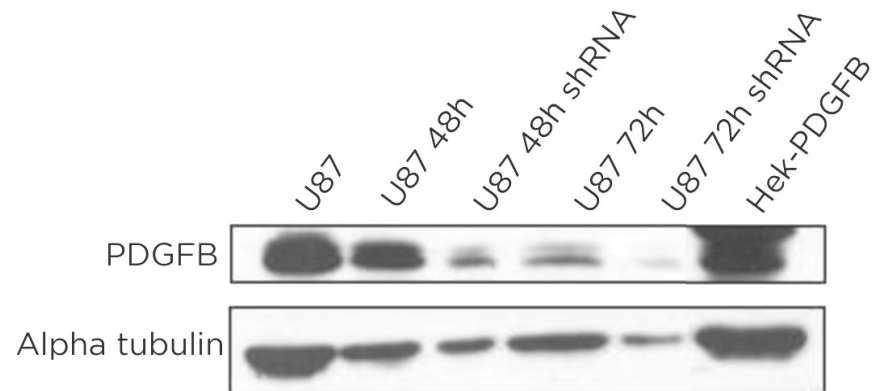
326A mAb is able to detect human PDGFB protein by WB.

To further validate 326A mAb we performed WB detection after siRNA-mediated protein knockdown. We used the U87 (human primary glioblastoma) cell line treated with siRNA during different times (48h and 72h). Untreated cell line and V5-tagged human PDGFB expressed in HEK293T cell line were used as negative and positive controls respectively. A decrease of protein expression was observed in U87 48h shRNA and U87 72h shRNA extracts when we were using 326A mAb. These results confirm antibody specificity.

DILUTION neat supernatant

LANES

Lane 1 U87 cell line	100ug (+)
Lane 2 U87 cell line	100ug (+)
Lane 3 U87 treated shRNA	100ug (+)
Lane 4 U87 cell line	100ug (+)
Lane 5 U87 treated shRNA	100ug (+)
Lane 6 HEK-PDGFB transfected cells	100ug (+)



● | IHC-P | **Immunohistochemistry (paraffin)**

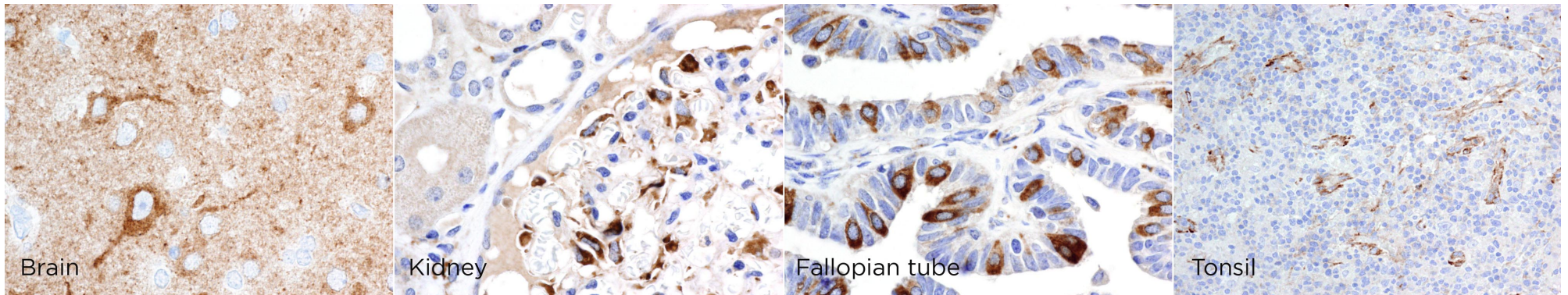
326A mAb can be used to detect PDGFB protein in human paraffin tissues

TISSUE SAMPLE Human brain, kidney, fallopian tube and tonsil

DILUTION 1:20 (purified)

ANT. RETRIEVAL 20 minutes ER2 (Tris-EDTA)

DETECTION SYSTEM Novolink kit (BondMax Leica)



● | IF | **Immunofluorescence (paraffin)** Not tested

● | IHC-F | **Immunohistochemistry (frozen)** Not Recommended

● | FC | **Flow Cytometry** Not tested

● | IP | **Immunoprecipitation** Not Tested