

MBP | Validation File

TARGET MBP (Maltose Binding Protein)

CLONE NAME LKB29F

DESCRIPTION Mouse monoclonal

ANTIGEN USED MBP-LKB1 recombinant protein

ISOTYPE IgG1

SPECIES REACTIVITY MBP is a part of the maltose/maltodextrin system of Escherichia coli

LOCALIZATION not expressed in mammary tissues

POSITIVE CONTROL MBP protein

STORAGE BUFFER Tissue culture supernatant: 0.02% sodium azide

STORAGE Aliquot and store at 4C. Do not freeze

 Recommended

 Inconclusive

 Not Recommended

 Not Tested

APPLICATIONS

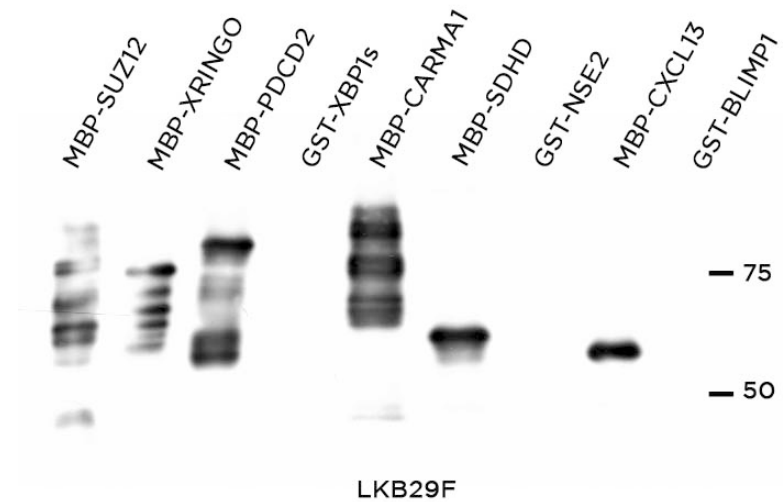
● | WB | **Western Blotting**

LKB29F mAb is able to detect MBP protein by WB.

DILUTION 1:60 (supernatant)

LANES

Lane 1 MBP-SUZ12 recombinant protein	(0,1ug) (+)
Lane 2 MBP-XRINGO recombinant protein	(0,1ug) (+)
Lane 3 MBP-PDCD2 recombinant protein	(0,1ug) (+)
Lane 4 GST-XBP1s recombinant protein	(0,1ug) (-)
Lane 5 MBP-CARMA1 recombinant protein	(0,1ug) (+)
Lane 6 MBP-SDHD recombinant protein	(0,1ug) (+)
Lane 7 GST-NSE2 recombinant protein	(0,1ug) (-)
Lane 8 MBP-CXCL13 recombinant protein	(0,1ug) (+)
Lane 9 GST-BLIMP1 recombinant protein	(0,1ug) (-)



- | IHC-F | **Immunohistochemistry (frozen)** Not Tested
- | IHC-P | **Immunohistochemistry (paraffin)** Not Tested
- | IF | **Immunofluorescence (paraffin)** Not Tested
- | FC | **Flow Cytometry** Not tested
- | ICC | **Immunocytochemistry** Not Tested
- | IP | **Immunoprecipitation** Not Tested