

MASTL | Validation File

TARGET Human MASTL

CLONE NAME RIPLY 74C

DESCRIPTION mouse monoclonal

ANTIGEN USED GST-hMASTL recombinant full-length protein

ISOTYPE IgG1

SPECIES REACTIVITY Human and mouse

LOCALIZATION Nuclear

POSITIVE CONTROL Tonsil

STORAGE BUFFER Tissue culture supernatant: 0.02% sodium azide
Purified antibody: PBS plus 1%BSA and 0.02% sodium azide. MAb concentration: 1mg/ml

STORAGE Aliquot and store at 4C. Do not freeze

 Recommended

 Inconclusive

 Not Recommended

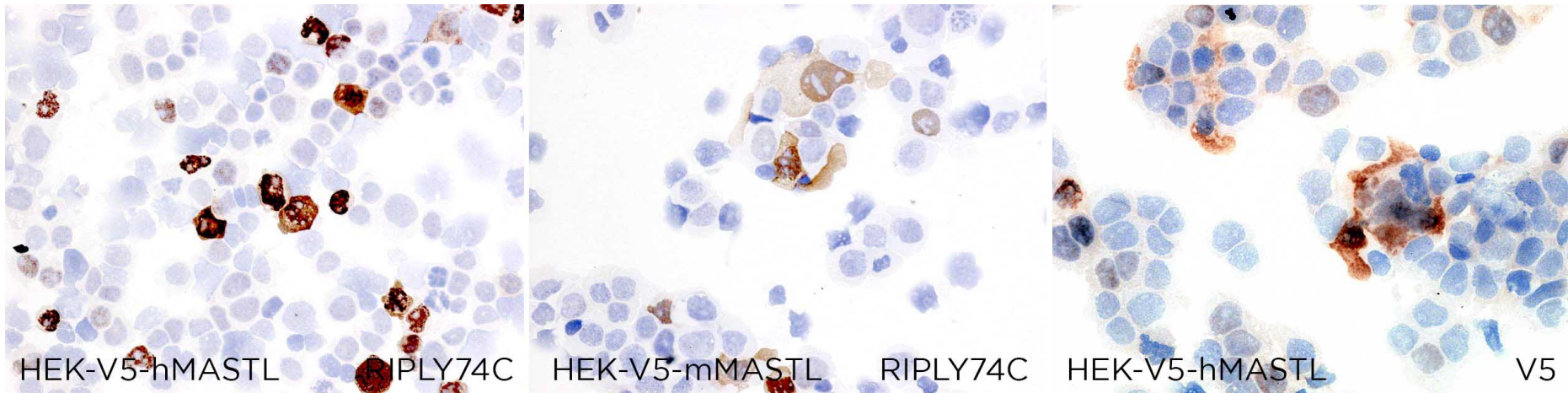
 Not Tested

APPLICATIONS

● | ICC | Immunocytochemistry

RIPLY74C is able to detect human and mouse MASTL protein in immunocytochemistry

To confirm that RIPLY74C mAb recognizes human and mouse MASTL proteins, immunocytochemistry on frozen cytospin preparations of V5-tagged human and mouse MASTL expressed in HEK293 was performed. Anti-V5 was used as positive control.



● | WB | **Western Blotting**

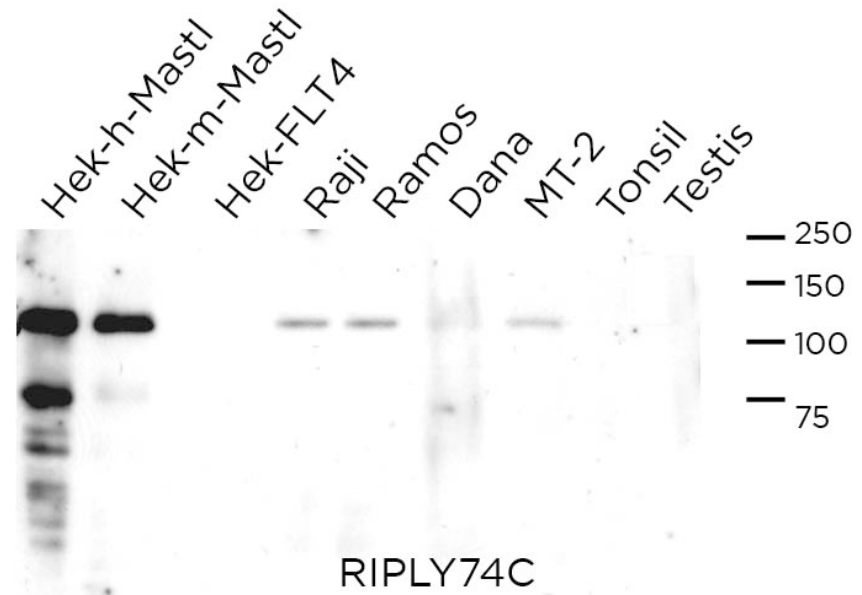
RIPLY 74C mAb is able to detect human MASTL protein by WB.

DILUTION 1:50 purified antibody

Predicted molecular weight: **97kDa**
Observed molecular weight: **120kDa**

LANES

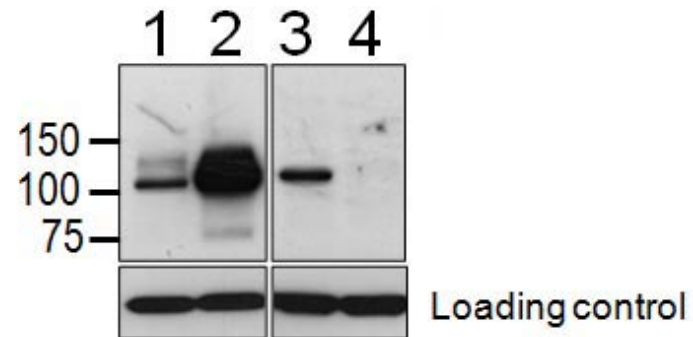
Lane 1 Hek-hMASTL transfected cells	(20ug) (+)
Lane 2 Hek-mMASTL transfected cells	(20ug) (+)
Lane 3 Hek-FLT4 transfected cells	(20ug) (-)
Lane 4 Raji cell line	(100ug) (+)
Lane 5 Ramos cell line	(100ug) (+)
Lane 6 Dana cell line	(100ug) (+)
Lane 7 MT-2 cell line	(100ug) (+)
Lane 8 human tonsil	(100ug) (-)
Lane 9 Human testis	(100ug) (-)



LANES

Lane 1 293T mock transfected cells	(40ug)
Lane 2 293T V5-mMASTL transfected cells	(40ug)
Lane 3 HeLa shCtrl transfected cells	(40ug)
Lane 4 HeLa shMASTL transfected cells	(40ug)

GAPDH was used as loading control



● | IHC-P | **Immunohistochemistry (paraffin)**

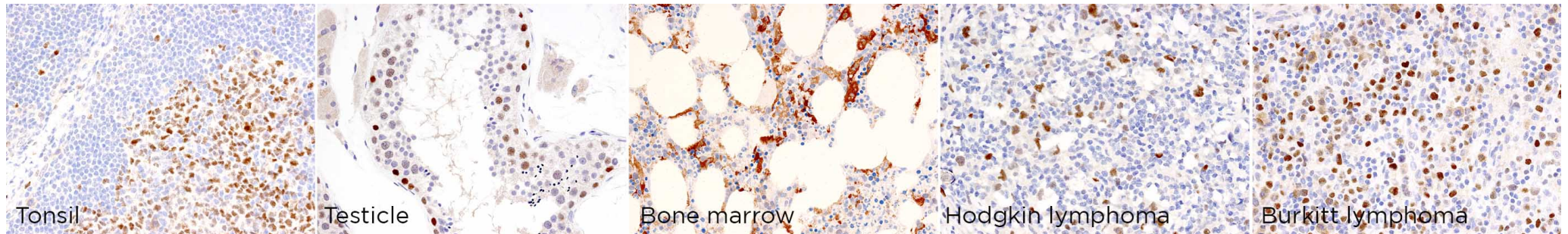
RIPLY74C mAb can be used to detect MASTL protein in human paraffin tissues.

TISSUE SAMPLE human tonsil, testicle, bone marrow, Hodgkin and Burkitt lymphoma.

DILUTION 1:15 supernatant
1:50 purified antibody

ANT. RETRIEVAL 20 minutes ER2 (Tris-EDTA)

DETECTION SYSTEM Novolink kit (BondMax Leica)



● | IF | **Immunofluorescence (paraffin)** Not tested

● | FC | **Flow Cytometry** Not tested

● | IP | **Immunoprecipitation** Not Tested

● | IHC-F | **Immunohistochemistry (frozen)** Not Tested

SOLD BY: Abcam

REFERENCES

Álvarez-Fernández M, Sanz-Flores M, Sanz-Castillo B, Salazar-Roa M, Partida D, Zapatero-Solana E, Ali HR, Manchado E, Lowe S, VanArsdale T, Shields D, Caldas C, Quintela-Fandino M, Malumbres M. Therapeutic relevance of the PP2A-B55 inhibitory kinase MASTL/Greatwall in breast cancer. *Cell Death Differ.* 2018 May;25(5):828-840.

