

## MARCO | Validation File

**TARGET** Macrophage receptor MARCO

**CLONE NAME** MAKI373B

**DESCRIPTION** Rat monoclonal

**ANTIGEN USED** RBL1-TLA-GFP-MARCO-MYC transfected cells, last booster with recombinant human HIS-MARCO (79-520aa)

**ISOTYPE** IgG2b

**SPECIES REACTIVITY** human

**LOCALIZATION** cell membrane

**POSITIVE CONTROL** Human liver

**STORAGE BUFFER** Tissue culture supernatant: 0.02% sodium azide

**STORAGE** Aliquot and store at 4C. Do not freeze

 Recommended

 Inconclusive

 Not Recommended

 Not Tested

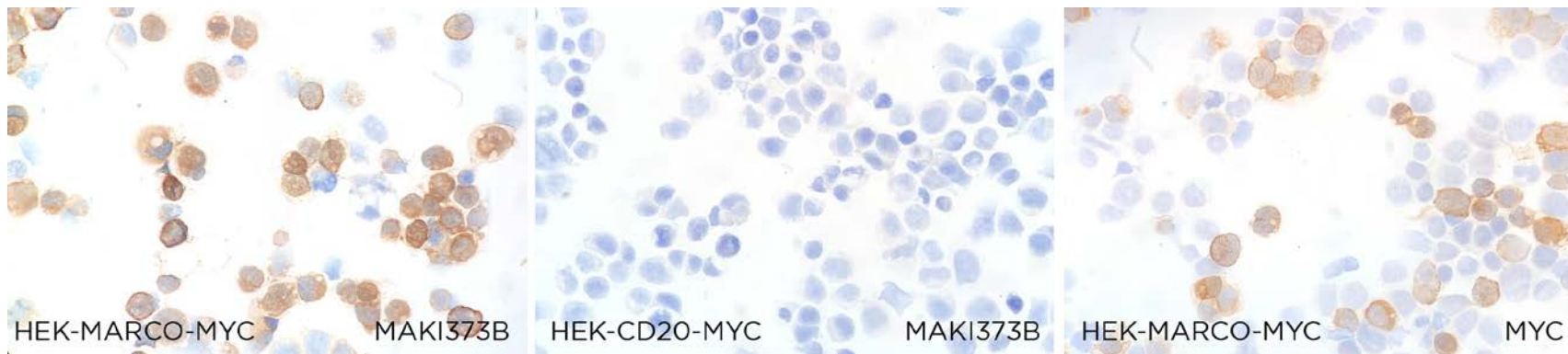
# APPLICATIONS

## ● | ICC | *Immunocytochemistry*

MAKI373B mAb is able to detect human MARCO protein in immunocytochemistry

**DILUTION** neat supernatant

To confirm that MAKI373B mAb recognizes human MARCO protein, immunocytochemistry on frozen cytospin preparations of human MARCO expressed in HEK293 cell line was performed. Cytospin preparation of human CD20 protein was used as a negative control. Anti-MYC was used as positive control.



● | WB | **Western Blotting**

MAKI373B mAb is able to detect human MARCO protein by WB.

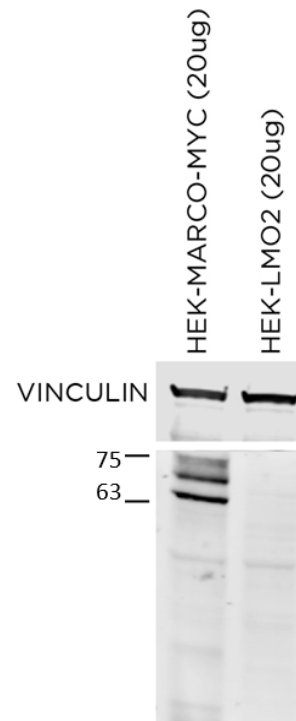
**DILUTION** neat supernatant

Predicted molecular weight **50kDa**  
Observed molecular weight **50kDa**

**LANES**

Lane 1 HEK-MARCO-MYC-DDK (20ug) (+)  
Lane 2 HEK-LMO2 (20ug) (-)

Vinculin was used as loading control



● | IHC-P | **Immunohistochemistry (paraffin)**

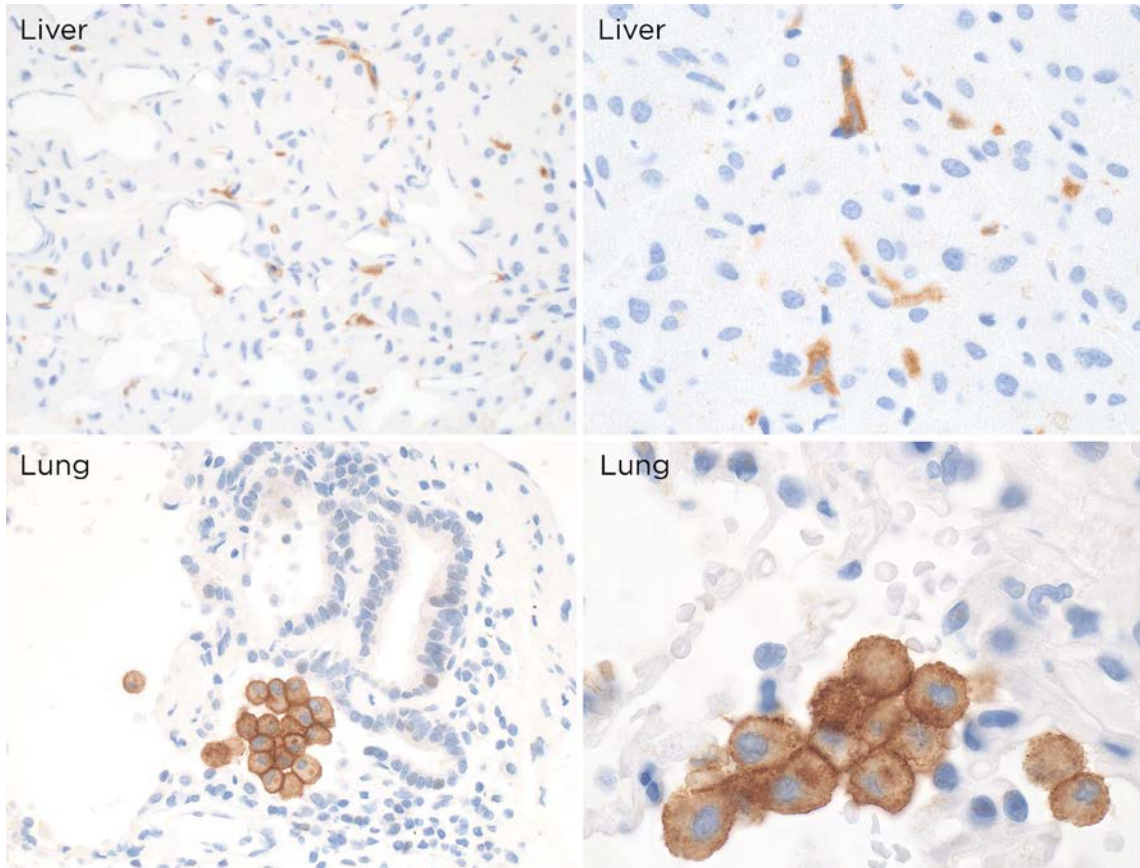
MAKI373B mAb can be used to detect MARCO protein in human paraffin tissues

**TISSUE SAMPLE** Human liver and lung

**DILUTION** 1:10 (supernatant)

**ANT. RETRIEVAL** 20 minutes ER2 (Tris-EDTA)

**DETECTION SYSTEM** Novolink kit (BondMax Leica)

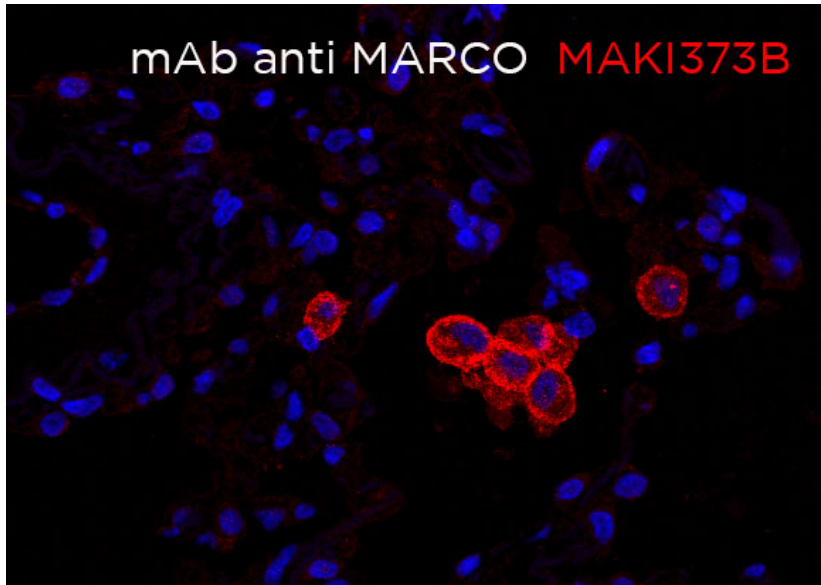


● | IF | **Immunofluorescence (paraffin)**

**TISSUE SAMPLE** Human lung

**DILUTION** no dilution (neat supernatant)

**ANT. RETRIEVAL** 20 minutes ER2 (Tris-EDTA)



● | IHC-F | **Immunohistochemistry (frozen)** Not tested

● | FC | **Flow Cytometry** Not tested

● | IP | **Immunoprecipitation** Not recommended