

## MAP17 | Validation File

**TARGET** Membrane associated protein 17 (DD96)

**CLONE NAME** 165C

**DESCRIPTION** mouse monoclonal

**ANTIGEN** GST-MAP17

**ISOTYPE** IgG1

**SPECIES REACTIVITY** human

**LOCALIZATION** cytoplasm

**POSITIVE CONTROL** kidney

**STORAGE BUFFER** Tissue culture supernatant: 0.02% sodium azide

**STORAGE** Aliquot and store at 4C. Do not freeze

 Recommended

 Inconclusive

 Not Recommended

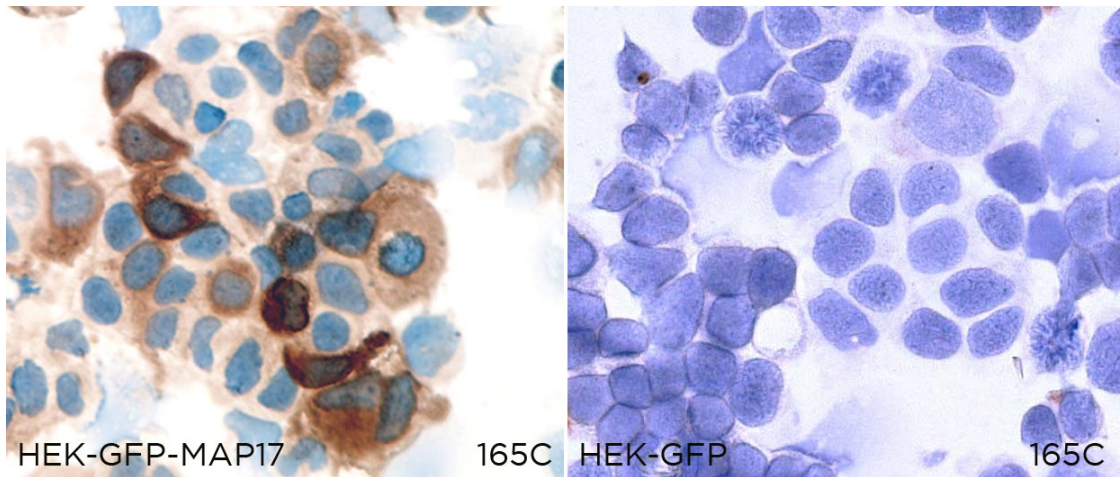
 Not Tested

# APPLICATIONS

## ● | ICC | Immunocytochemistry

165C is able to detect human MAP17 protein in immunocytochemistry

To confirm that 165C mAb recognizes human MAP17 protein, immunocytochemistry on frozen cytospin preparations of GFP-tagged MAP17 expressed in HEK293T was performed. Cytospin preparation of GFP transfected cells was used as negative control.



● | WB | **Western Blotting**

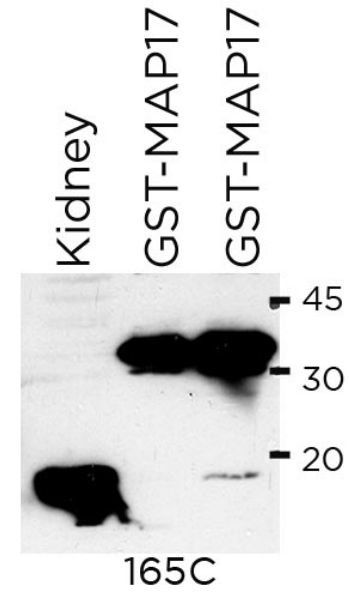
165C mAb is able to detect human MAP17 protein by WB.

**DILUTION** undiluted supernatant

Predicted molecular weight: 12kDa  
Observed molecular weight: 12kDa

Lanes

Lane 1 Human kidney (100ug) (+)  
Lane 2 GST-MAP17 recombinant protein (0,1ug) (+)  
Lane 3 GST-MAP17 recombinant protein (0,2ug) (+)



● | IHC-P | **Immunohistochemistry (paraffin)**

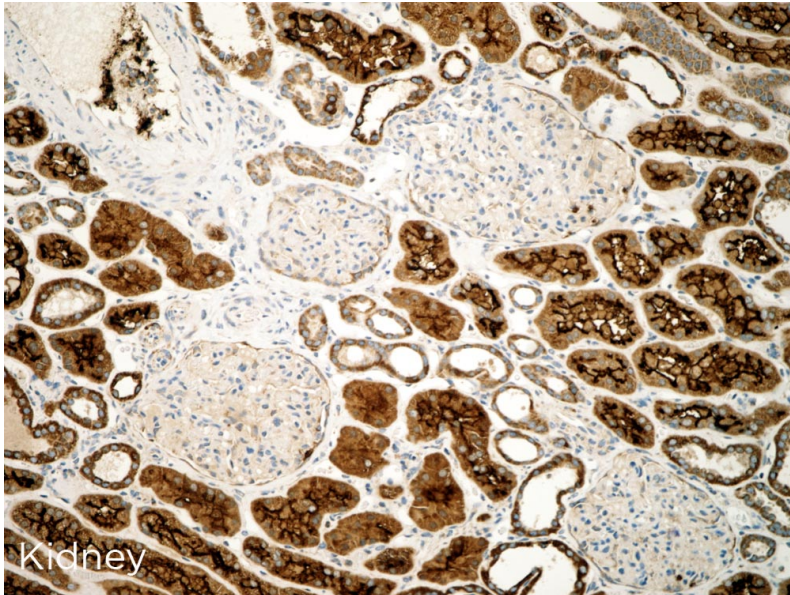
165C mAb can be used to detect MAP17 protein in human paraffin tissues.

**TISSUE SAMPLE** Human kidney

**DILUTION** 1:5

**ANT. RETRIEVAL** 20 minutes ER2 (Tris-EDTA)

**DETECTION SYSTEM** Novolink kit (BondMax Leica)



● | IF | **Immunofluorescence (paraffin)** Not tested

● | FC | **Flow Cytometry** Not tested

● | IP | **Immunoprecipitation** Not Tested

● | IHC-F | **Immunohistochemistry (frozen)** Not Recommended

**SOLD BY:** Millipore

## REFERENCES

MAP17 and SGLT1 protein expression levels as prognostic markers for cervical tumor patient survival. Perez M, Praena-Fernandez JM, Felipe-Abrio B, Lopez-Garcia MA, Lucena-Cacace A, Garcia A, Lleonart M, Roncador G, Marin JJ, Carnero A. PLoS One. 2013;8 (2).

MAP17 and the double-edged sword of ROS. Carnero A. Biochim Biophys Acta. 2012 Aug;1826 (1):44-52.

p38 $\alpha$  limits the contribution of MAP17 to cancer progression in breast tumors. Guijarro MV, Vergel M, Marin JJ, Muñoz-Galván S, Ferrer I, Ramon y Cajal S, Roncador G, Blanco-Aparicio C, Carnero A. Oncogene. 2012 Oct 11;31(41):4447-59.

MAP17 inhibits Myc-induced apoptosis through PI3K/AKT pathway activation. Guijarro MV, Link W, Rosado A, Leal JF, Carnero A. Carcinogenesis. 2007 Dec;28(12):2443-50.

MAP17 enhances the malignant behavior of tumor cells through ROS increase. Guijarro MV, Leal JF, Blanco-Aparicio C, Alonso S, Fominaya J, Lleonart M, Castellvi J, Ramon y Cajal S, Carnero A. Carcinogenesis. 2007 Oct;28(10):2096-104.

MAP17 overexpression is a common characteristic of carcinomas. Guijarro MV, Leal JF, Fominaya J, Blanco-Aparicio C, Alonso S, Lleonart M, Castellvi J, Ruiz L, Ramon Y Cajal S, Carnero A. Carcinogenesis. 2007 Aug;28(8):1646-52.