

MALT1 | Validation File

TARGET MALT1 (Mucosa associated lymphoid tissue lymphoma translocation protein 1)

CLONE NAME RON169A

DESCRIPTION mouse monoclonal

ANTIGEN pCDNA3-MALT1-flag plasmid vector

ISOTYPE IgG1

SPECIES REACTIVITY human

LOCALIZATION cytoplasm

POSITIVE CONTROL SSK41 cell line

STORAGE BUFFER Tissue culture supernatant: 0.02% sodium azide

STORAGE Aliquot and store at 4C. Do not freeze

 Recommended

 Inconclusive

 Not Recommended

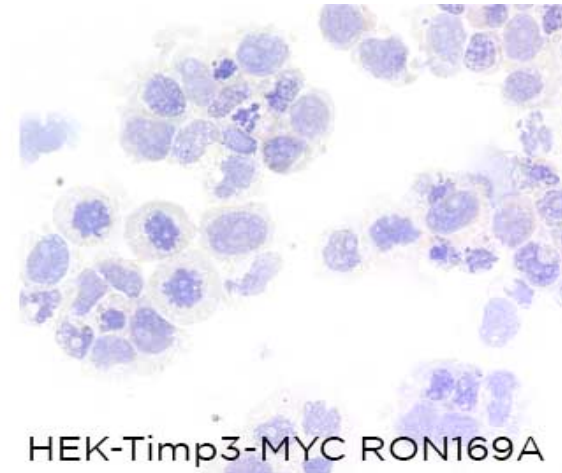
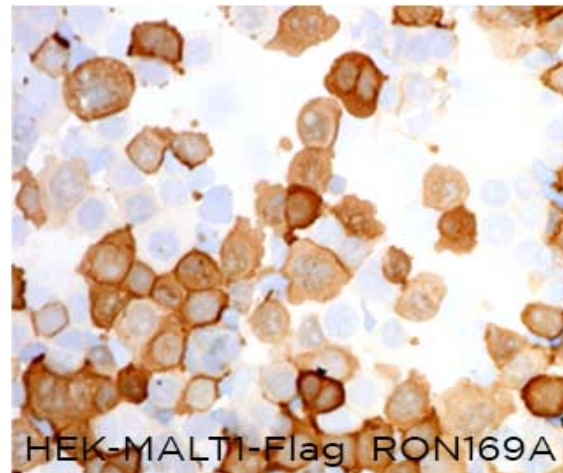
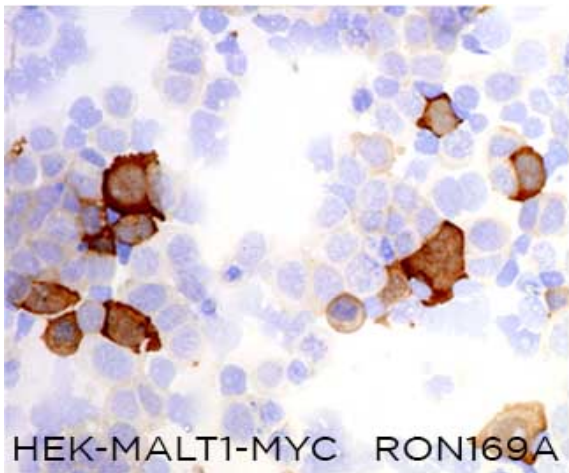
 Not Tested

APPLICATIONS

● | ICC | Immunocytochemistry

RON169A is able to detect human MALT1 protein in immunocytochemistry

To confirm that RON169A mAb recognizes human MALT1 protein, immunocytochemistry on frozen cytospin preparations of human MALT1 expressed in HEK293T was performed. Cytospin preparation of myc tagged human Timp3 protein was used as a negative control.



● | WB | **Western Blotting**

RON169A mAb is able to detect human MALT1 protein by WB.

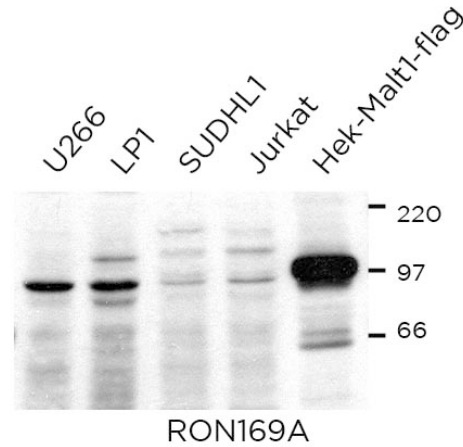
DILUTION neat supernatant

Predicted molecular weight: **90kDa**

Observed molecular weight: **90kDa**

LANES

Lane 1 U266 cell line	(100ug) (+)
Lane 2 LP1 cell line	(100ug) (+)
Lane 3 SUDHL1 cell line	(100ug) (+)
Lane 4 Jurkat cell line	(100ug) (+)
Lane 5 Hek-Malt1-flag	(100ug) (+)



● | IHC-F | **Immunohistochemistry (frozen)** Not Recommended

● | IHC-P | **Immunohistochemistry (paraffin)** Not Recommended

● | IF | **Immunofluorescence (paraffin)** Not Recommended

● | FC | **Flow Cytometry** Not tested

● | IP | **Immunoprecipitation** Not Tested

REFERENCES

Maestre L, Fontan L, Martinez-Climent JA, Garcia JF, Cigudosa JC, Roncador G. Generation of a new monoclonal antibody against MALT1 by genetic immunization. Hybridoma (Larchmt). 2007 Apr; 26 (2):86-91.