

## MALT1 | Validation File

**TARGET** MALT1 (Mucosa associated lymphoid tissue lymphoma translocation protein 1)

**CLONE NAME** 31E

**DESCRIPTION** mouse monoclonal

**ANTIGEN USED** MALT1-His full length recombinant protein

**ISOTYPE** IgG2b

**SPECIES REACTIVITY** human

**LOCALIZATION** cytoplasm

**POSITIVE CONTROL** SSK41 cell line

**STORAGE BUFFER** Tissue culture supernatant: 0.02% sodium azide

**STORAGE** Aliquot and store at 4C. Do not freeze

 Recommended

 Inconclusive

 Not Recommended

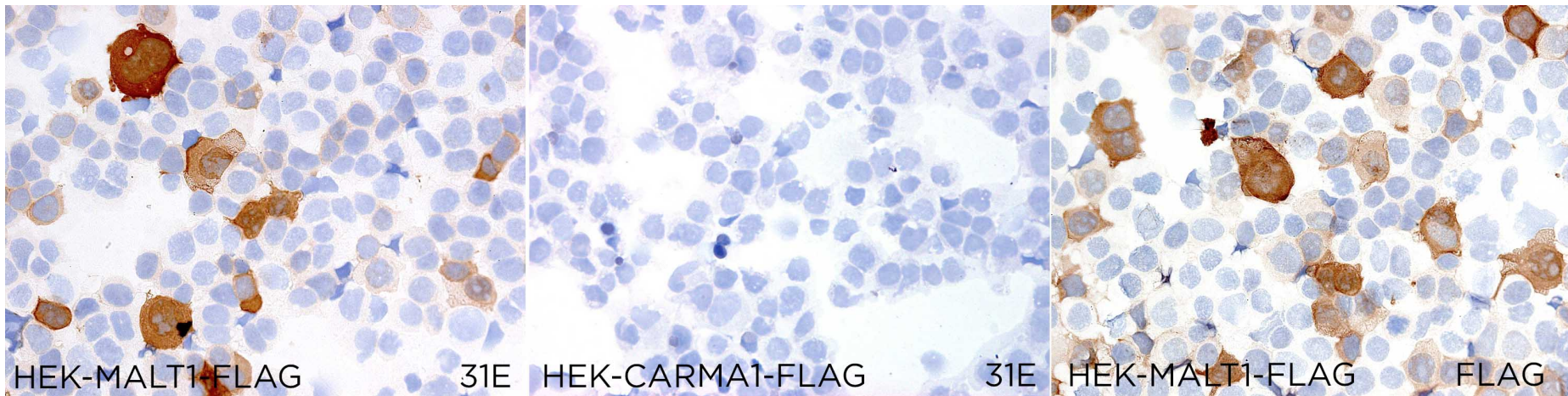
 Not Tested

# APPLICATIONS

## ● | ICC | Immunocytochemistry

31E is able to detect human MALT1 protein in immunocytochemistry

To confirm that 31E mAb recognizes human MALT1 protein, immunocytochemistry on frozen cytopins preparations of human MALT1 expressed in HEK293T cell line was performed. Cytopsin preparation of flag tagged human CARMA1 protein was used as a negative control.



● | WB | **Western Blotting**

31E mAb is able to detect human MALT1 protein by WB.

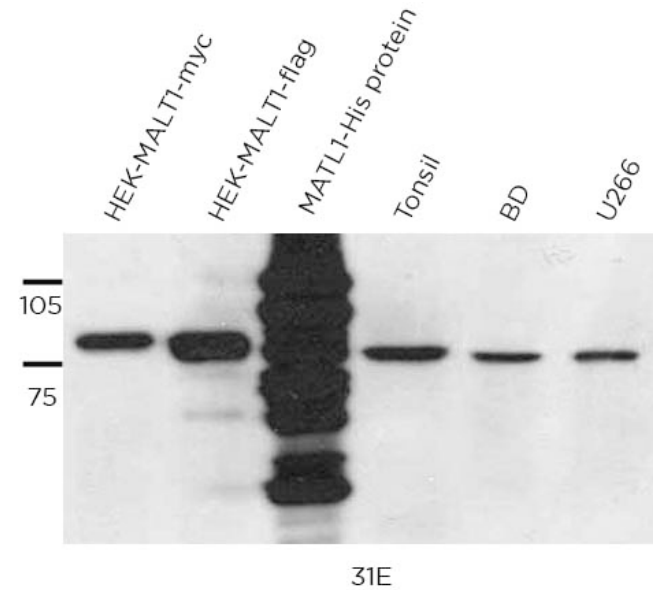
**DILUTION** neat supernatant

Predicted molecular weight: **90kDa**

Observed molecular weight: **90kDa**

**LANES**

Lane 1 HEK-MALT1-myc	(20ug) (+)
Lane 2 HEK-MALT1-flag	(20ug) (+)
Lane 3 MALT1-His protein	(0.1ug) (+)
Lane 4 Human tonsil	(100ug) (+)
Lane 5 BD cell line	(100ug) (+)
Lane 6 U266 cell line	(100ug) (+)



● | IHC-P | **Immunohistochemistry (paraffin)**

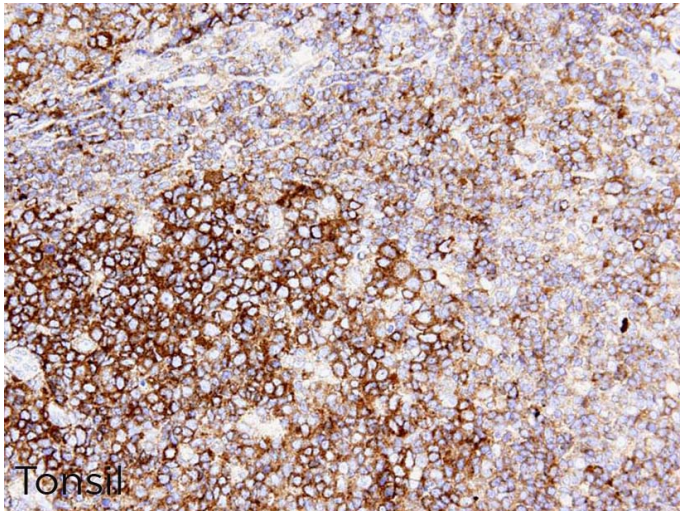
31E mAb antibody is not validated for IHC since the results obtained are not reproducible and do not correspond to the expected human MALT-1 expression.

**TISSUE SAMPLE** Human tonsil

**DILUTION** 1:400

**ANT. RETRIEVAL** 20 minutes ER2 (Tris-EDTA)

**DETECTION SYSTEM** Novolink kit (BondMax Leica)



● | IF | **Immunofluorescence (paraffin)** Not tested

● | FC | **Flow Cytometry** Not tested

● | IP | **Immunoprecipitation** Not Tested

● | IHC-F | **Immunohistochemistry (frozen)** Not Recommended

**SOLD BY:** Sigma-Aldrich