

Luciferase | Validation File

TARGET Firefly Luciferase

CLONE NAME LAS126A

DESCRIPTION Rat monoclonal

ANTIGEN USED His-Luciferase

ISOTYPE IgG2b

SPECIES REACTIVITY Firefly

LOCALIZATION not expressed in mammary tissues

POSITIVE CONTROL Luciferase expressing cells

STORAGE BUFFER Tissue culture supernatant: 0.02% sodium azide

Purified antibody: PBS plus 1%BSA and 0.02% sodium azide. MAb concentration: 1mg/ml

STORAGE Aliquot and store at 4C. Do not freeze

 Recommended

 Inconclusive

 Not Recommended

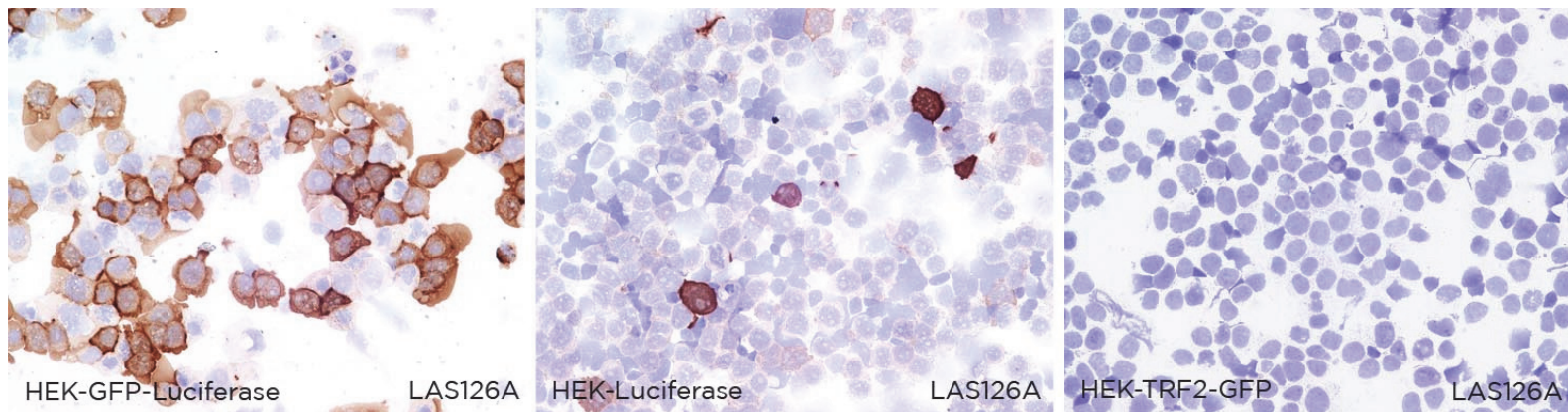
 Not Tested

APPLICATIONS

● | ICC | *Immunocytochemistry*

LAS126A is able to detect Firefly Luciferase protein in immunocytochemistry

To confirm that LAS126A mAb recognizes Firefly Luciferase protein, immunohistochemistry on frozen cytospin preparations of GFP-Luciferase and Luciferase expressed in HEK293 cell line was performed. HEK-TRF2-GFP transfected cells were used as negative control.



| WB | **Western Blotting**

● LAS126A mAb is able to detect Firefly Luciferase protein by WB.

DILUTION 1:10.000 (purified antibody)

Protein predicted molecular weight: **65kDa**

LANES

Lane 1 HEK-GFP-Luciferase transfected cells (20ug) (+)
Lane 2 HEK-Luciferase transfected cells (20ug) (+)
Lane 3 HEK-Luciferase-4TI transfected cells (20ug) (+)
Lane 4 HEK-GFP-XBP1s transfected cells (20ug) (-)

- | IHC-F | **Immunohistochemistry (frozen)** Not Tested
- | IHC-P | **Immunohistochemistry (paraffin)** Not Tested
- | IF | **Immunofluorescence (paraffin)** Not Tested
- | FC | **Flow Cytometry** Not Tested
- | IP | **Immunoprecipitation** Not Tested

SOLD BY: Abcam

