

## Luciferase | Validation File

**TARGET** Firefly Luciferase

**CLONE NAME** LAS126A

**DESCRIPTION** Rat monoclonal

**ANTIGEN USED** His-Luciferase

**ISOTYPE** IgG2b

**SPECIES REACTIVITY** Firefly

**LOCALIZATION** not expressed in mammary tissues

**POSITIVE CONTROL** Luciferase expressing cells

**STORAGE BUFFER** Tissue culture supernatant: 0.02% sodium azide

Purified antibody: PBS plus 1%BSA and 0.02% sodium azide. MAb concentration: 1mg/ml

**STORAGE** Aliquot and store at 4C. Do not freeze



Recommended



Inconclusive



Not Recommended



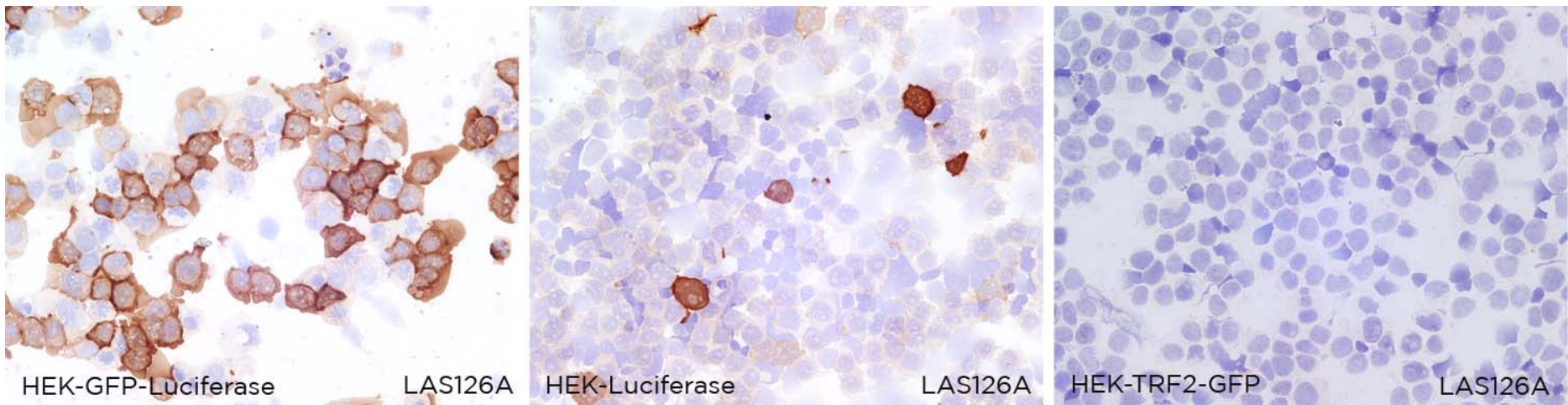
Not Tested

# APPLICATIONS

## ● | ICC | Immunocytochemistry

LAS126A is able to detect Firefly Luciferase protein in immunocytochemistry

To confirm that LAS126A mAb recognizes Firefly Luciferase protein, immunohistochemistry on frozen cytospin preparations of GFP-Luciferase and Luciferase expressed in HEK293 cell line was performed. HEK-TRF2-GFP transfected cells were used as negative control.



● | WB | **Western Blotting**

LAS126A mAb is able to detect Firefly Luciferase protein by WB.

**DILUTION** 1:10.000 (purified antibody)

Protein predicted molecular weight: **65kDa**

**LANES**

Lane 1 HEK-GFP-Luciferase transfected cells (20ug) (+)  
Lane 2 HEK-Luciferase transfected cells (20ug) (+)  
Lane 3 HEK-Luciferase-4TI transfected cells (20ug) (+)  
Lane 4 HEK-GFP-XBP1s transfected cells (20ug) (-)

- | IHC-F | **Immunohistochemistry (frozen)** Not Tested
- | IHC-P | **Immunohistochemistry (paraffin)** Not Tested
- | IF | **Immunofluorescence (paraffin)** Not Tested
- | FC | **Flow Cytometry** Not Tested
- | IP | **Immunoprecipitation** Not Tested

