

LMO2 | Validation File

TARGET Human LMO2 (LIM domain only 2)

CLONE NAME 299B

DESCRIPTION mouse monoclonal

ANTIGEN USED LMO2-HIS-GST recombinant protein (full length)

ISOTYPE IgG1

SPECIES REACTIVITY human/mouse

LOCALIZATION nuclear

POSITIVE CONTROL tonsil

STORAGE BUFFER Tissue culture supernatant: 0.02% sodium azide

STORAGE Aliquot and store at 4C. Do not freeze

 Recommended

 Inconclusive

 Not Recommended

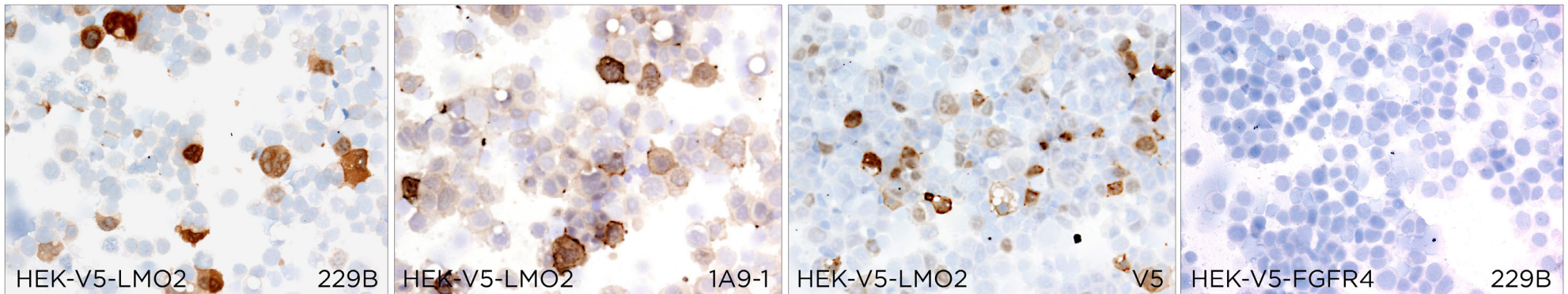
 Not Tested

APPLICATIONS

● | ICC | Immunocytochemistry

299B is able to detect human LMO2 protein in immunocytochemistry

To confirm that 299B mAb recognizes human LMO2 protein, immunohistochemistry on frozen cytospin preparations of HEK-V5-LMO2 transfected cells was performed. Anti-LMO2 (clone 1A9-1) (kindly provided by Dr Yasodha Natkunam, Department of Pathology, Stanford University School of Medicine, CA) was used as positive control. Nuclear and cytoplasmic staining is observed in HEK-V5-LMO2 cytospins using anti-LMO2 299B and anti-LMO2 1A9-1 mAbs. Anti-V5 monoclonal antibody was used as a positive control.



● | WB | **Western Blotting**

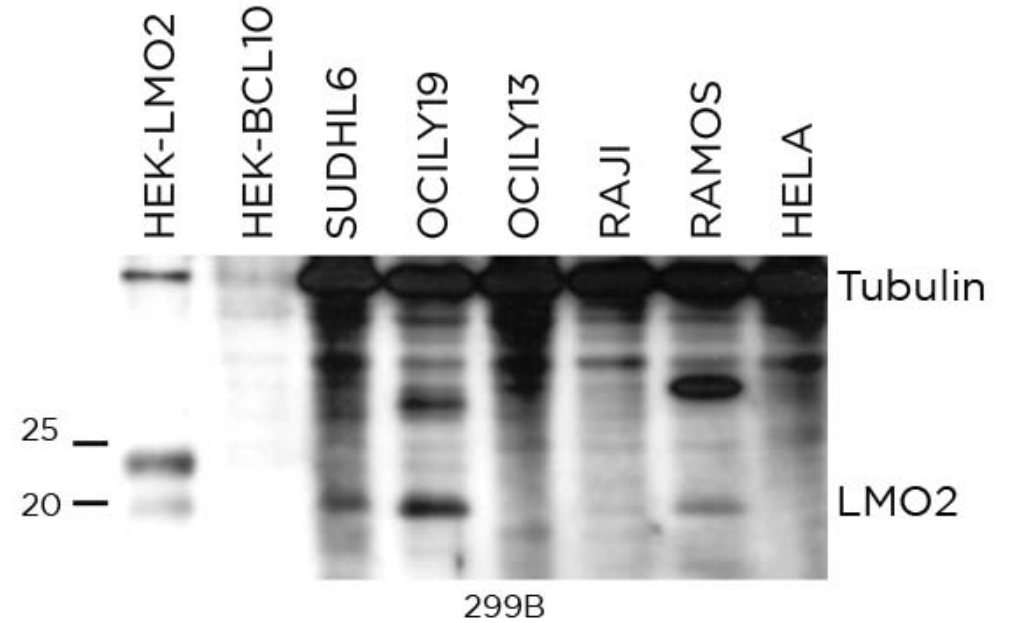
299B mAb is able to detect human LMO2 protein by WB.

DILUTION undiluted supernatant.

Predicted molecular weight: **18kDa**
Observed molecular weight: **16kDa**

LANES

Lane 1 Hek-pcdna3-V5-LMO2	(20ug) (+)
Lane 2 Hek-pcdna3-V5-Bcl10	(20ug) (-)
Lane 3 SUDHL6	(200ug) (+)
Lane 4 Ocil19	(200ug) (+)
Lane 5 Ocily3	(200ug) (-)
Lane 6 Raji	(200ug) (-)
Lane 7 Ramos	(200ug) (+)
Lane 8 HeLa	(200ug) (-)



● | IHC-P | **Immunohistochemistry (paraffin)**

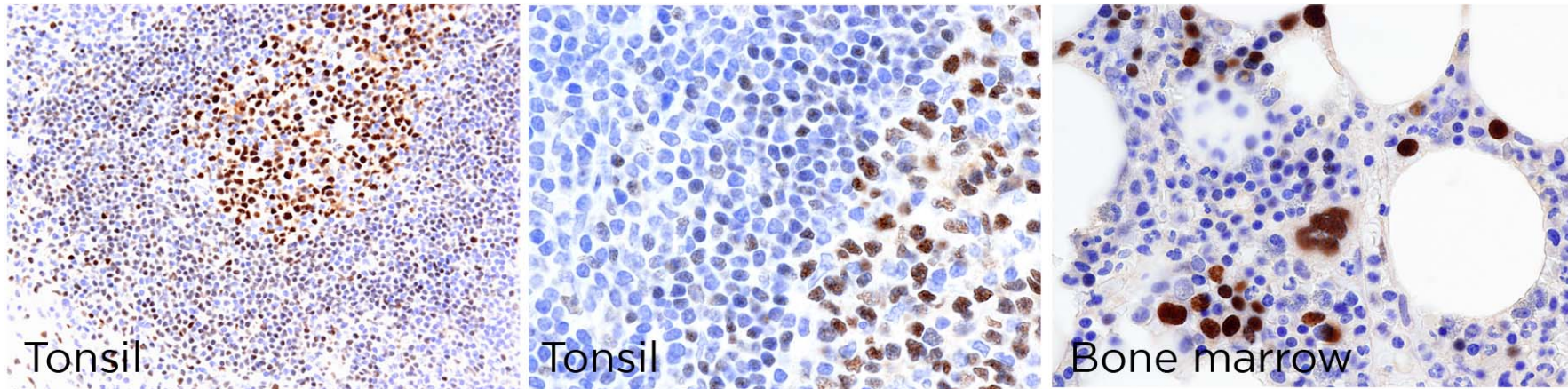
299B mAb can be used to detect LMO2 protein in human paraffin tissues

TISSUE SAMPLE Tonsil and bone marrow

DILUTION 1:10

ANT. RETRIEVAL 15 minutes ER2 (Tris-EDTA)

DETECTION SYSTEM Novolink kit (BondMax Leica)



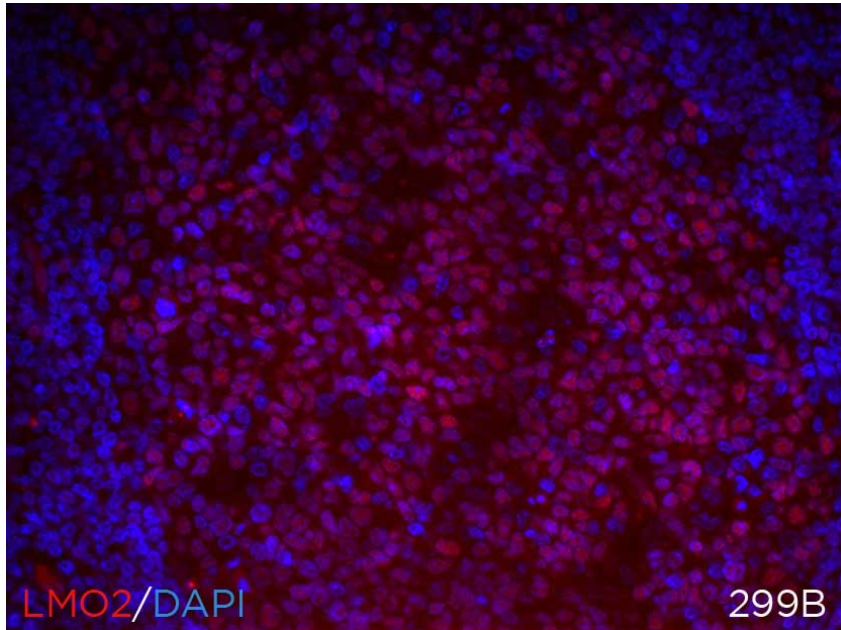
● | IF | **Immunofluorescence (paraffin)**

299B mAb can be used to detect LMO2 protein by immunofluorescence

TISSUE SAMPLE human tonsil

DILUTION 1:100 (purified antibody)

ANT. RETRIEVAL 20 minutes ER2 (Tris-EDTA)



● | FC | **Flow Cytometry** Not Tested

● | IP | **Immunoprecipitation** Not Tested

● | IHC-F | **Immunohistochemistry (frozen)** Not Recommended

SOLD BY: Millipore