

IL11RA | Validation File

TARGET Interleukin-11 receptor subunit alpha (IL11RA)

CLONE NAME LAU490A

DESCRIPTION rat monoclonal

ANTIGEN USED IL11RA-Fc-HIS (extracellular aa23-366)

ISOTYPE IgG2a

SPECIES REACTIVITY human

LOCALIZATION membrane

POSITIVE CONTROL

STORAGE BUFFER Tissue culture supernatant: 0.02% sodium azide

Purified antibody: PBS plus 1%BSA and 0.02% sodium azide. MAb concentration: 1mg/ml

STORAGE Aliquot and store at 4C. Do not freeze

 Recommended

 Inconclusive

 Not Recommended

 Not Tested

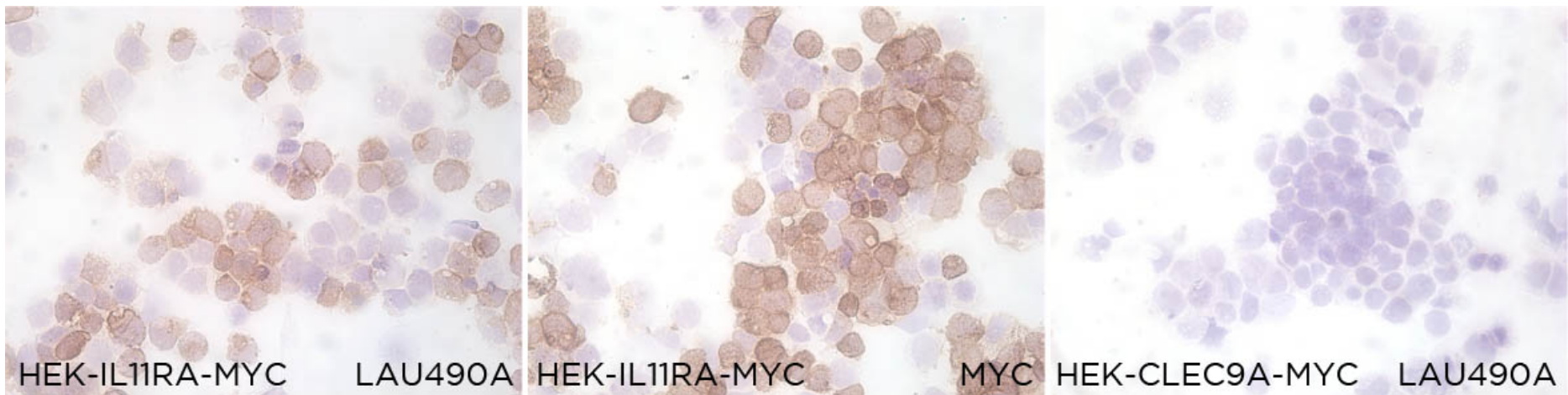
APPLICATIONS

● | ICC | Immunocytochemistry

LAU490A is able to detect human IL11RA protein in immunocytochemistry

DILUTION

To confirm that LAU490A mAb recognizes human IL11RA protein, immunocytochemistry on frozen cytospin preparations of IL11RA expressed in HEK293 cell line was performed. Anti-MYC was used as positive control. HEK-CLEC8A-MYC were used as a negative control.



● | WB | **Western Blotting**

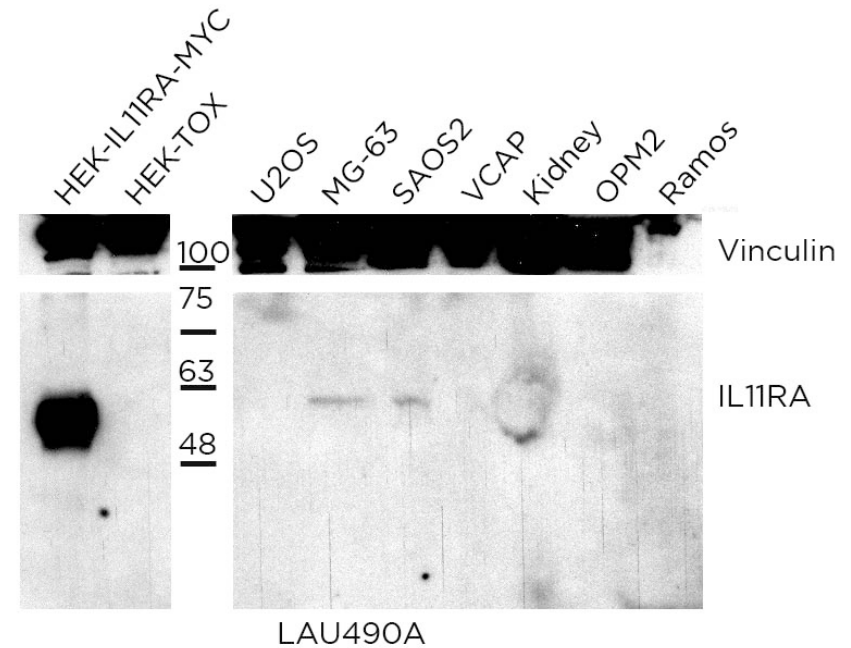
LAU490A mAb is able to detect human IL11RA protein by WB.

DILUTION neat supernatant

Predicted molecular weight **45kDa**
Observed molecular weight **45kDa**

LANES

- Lane 1 HEK-IL11RA-MYC (15ug)
- Lane 2 HEK-TOX (15ug)
- Lane 3 U266 cell line (100ug)
- Lane 4 MG-63 cell line (100ug)
- Lane 5 SAOS2 cell line (100ug)
- Lane 6 VCAP cell line (100ug)
- Lane 7 Human kidney (100ug)
- Lane 8 OPM2 cell line (100ug)
- Lane 9 Ramos cell line (100ug)



- | IHC-P | **Immunohistochemistry (paraffin)** Not tested
- | IHC-F | **Immunohistochemistry (frozen)** Not tested
- | IF | **Immunofluorescence (paraffin)** Not tested
- | FC | **Flow Cytometry** Not tested
- | IP | **Immunoprecipitation** Not Tested