

## HIF1a | Validation File

**TARGET** HIF1a

**CLONE NAME** SIMA343B

**DESCRIPTION** rat monoclonal

**ANTIGEN USED** mouse HIS-HIF1a (fragment 530-825)

**ISOTYPE** IgG2a

**SPECIES REACTIVITY** mouse and human

**LOCALIZATION** nuclei

**POSITIVE CONTROL** placenta

**STORAGE BUFFER** Tissue culture supernatant: 0.02% sodium azide

Purified antibody: PBS plus 1%BSA and 0.02% sodium azide. MAb concentration: 1mg/ml

**STORAGE** Aliquot and store at 4C. Do not freeze

 Recommended

 Inconclusive

 Not Recommended

 Not Tested

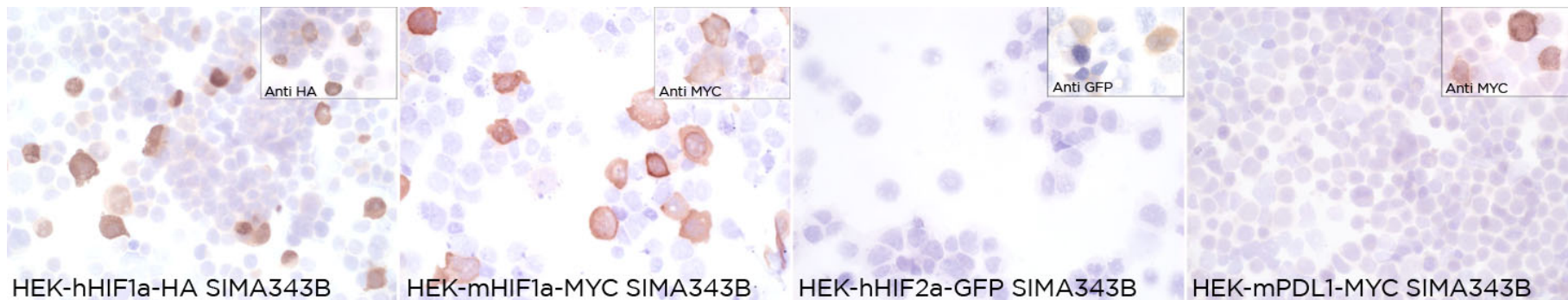
# APPLICATIONS

## ● | ICC | Immunocytochemistry

SIMA343B mAb is able to detect human and mouse HIF1a protein in immunocytochemistry

**DILUTION** no dilution (neat supernatant)  
1:200 purified antibody (1mg/ml)

To confirm that SIMA343B mAb recognizes human and mouse HIF1a protein, immunocytochemistry on frozen cytopins preparation of human and mouse HIF1a and hHIF2a expressed in HEK293T was performed. Anti-MYC, anti-HA and anti GFP Abs were used as positive controls. Cytospin preparation of mouse PDL1 protein was used as negative control.



● | WB | **Western Blotting**

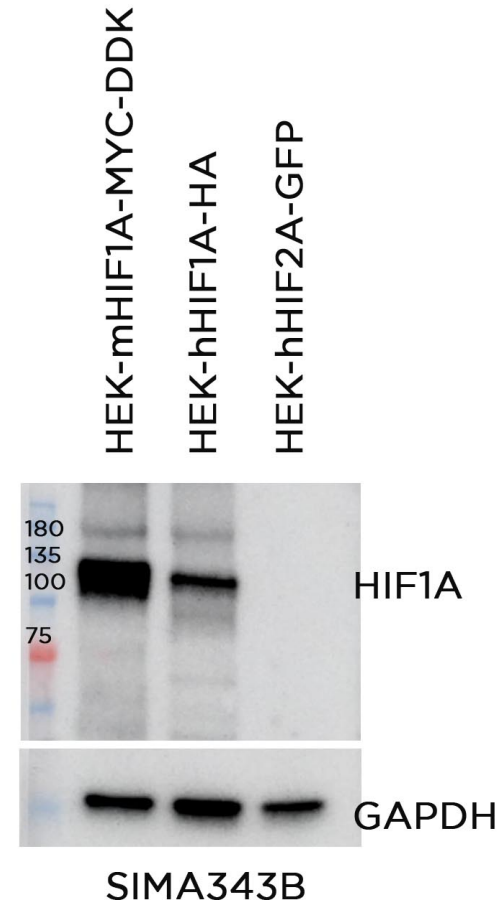
SIMA343B mAb is able to detect human Hif1a protein by WB (over-expression).

**DILUTION** no dilution (neat supernatant)  
1:200 purified antibody (1mg/ml)

Predicted molecular weight: **93kDa**  
Observed molecular weight: **>100kDa**

**LANES**

Lane 1 HEK-mouse HIF1A-MYC-DDK (10ug) (+)  
Lane 2 HEK-human HIF1A-HA (10ug) (+)  
Lane 3 HEK-human HIF2a-GFP (10ug) (-)



● | M-IHC-P | **Immunohistochemistry (paraffin)**

SIMA343B mAb is able to detect mouse HIF1a protein in mouse paraffin tissues

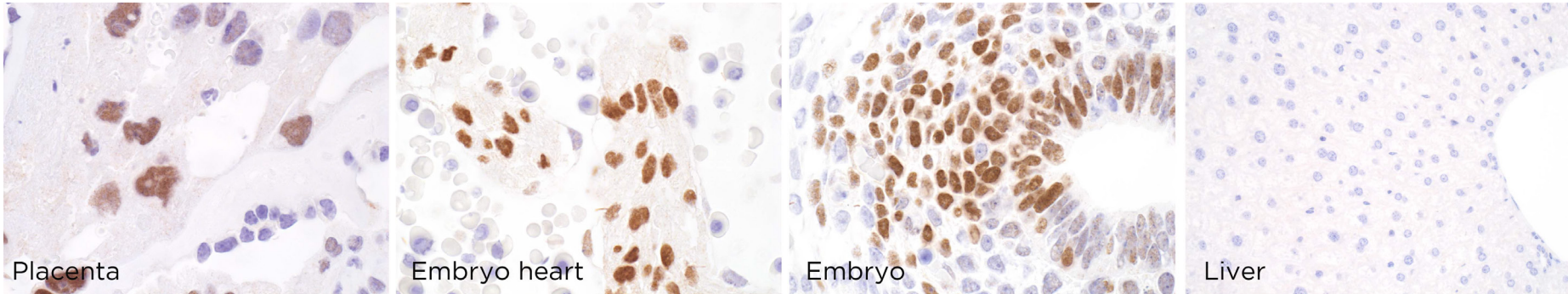
**TISSUE SAMPLE** mouse placenta, embryo heart, embryo and liver

**DILUTION** 1:30 (supernatant)

**ANT. RETRIEVAL** High pH9 95 °C

**Ab INCUBATION** 20 minutes, Rabbit anti-rat Vector + Novolink Polymer

**DETECTION SYSTEM** Autostainer Link® (Dako, Agilent)



● |H-IHC-P | **Immunohistochemistry (paraffin)**

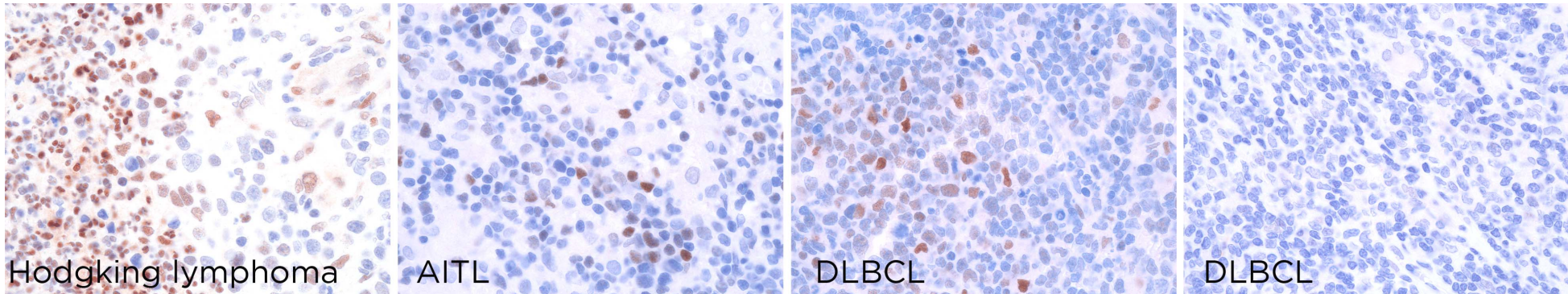
SIMA343B antibody can be used to detect human HIF1a protein in human paraffin tissues.

**TISSUE SAMPLE** human Hodgkin lymphoma, AITL and DLBCL tissues.

**DILUTION** no dilution (neat supernatant)  
1:200 purified antibody (1mg/ml)

**ANT. RETRIEVAL** 20 minutes ER2 (Tris-EDTA)

**DETECTION SYSTEM** Novolink kit (BondMax Leica)



● | IP | **Immunoprecipitation** Not tested

● | IHC-F | **Immunohistochemistry (frozen)** Not tested

● | IF | **Immunofluorescence (paraffin)** Not working

● | FC | **Flow Cytometry** Not tested