

## HP1 alpha | Validation File

**TARGET** Human HP1 $\alpha$  (Heterochromatin protein 1, CBX5)

**CLONE NAME** HP330A

**DESCRIPTION** Rat monoclonal

**ANTIGEN USED** GST-HP1 $\alpha$  + GST-HP1 $\gamma$  recombinant proteins

**ISOTYPE** IgG2a

**SPECIES REACTIVITY** Human

**LOCALIZATION** Nuclear

**POSITIVE CONTROL** Tonsil

**STORAGE BUFFER** Tissue culture supernatant: 0.02% sodium azide

**STORAGE** Aliquot and store at 4C. Do not freeze

**Protein homology:** HP1beta (CBX1) 66% and HP1gamma (CBX3) 61%

 Recommended

 Inconclusive

 Not Recommended

 Not Tested

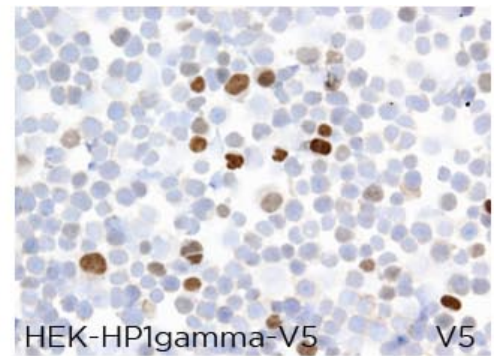
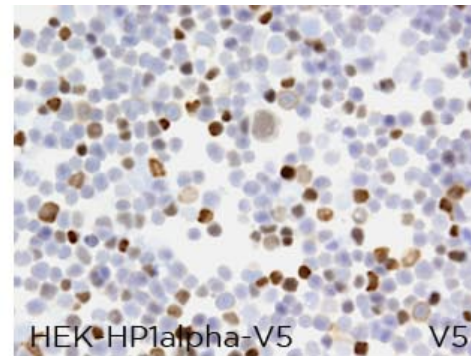
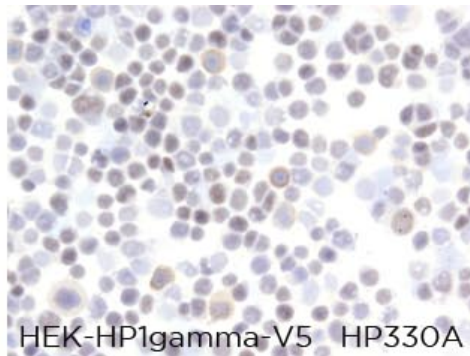
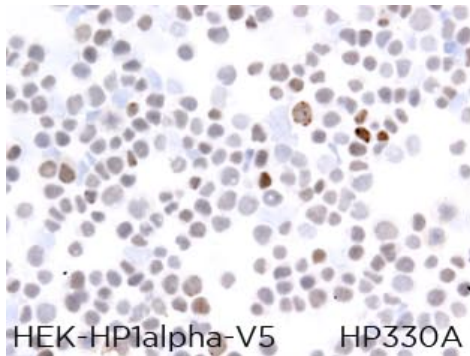
# APPLICATIONS

## ● | ICC | Immunocytochemistry

HP330A is able to detect human HP1 $\alpha$  protein in immunocytochemistry

**DILUTION** neat supernatant

To confirm that HP330A mAb recognizes human HP1 $\alpha$  protein, immunocytochemistry on frozen cytospin preparations of V5-tagged human HP1 $\alpha$  and HP1 $\gamma$  expressed in Hek293T was performed. Since HP1 antibodies are recognizing heterochromatin, also the untransfected cells are stained. Transfected cells present a stronger intensity compared to endogenous HP1 expression.



● | WB | **Western Blotting**

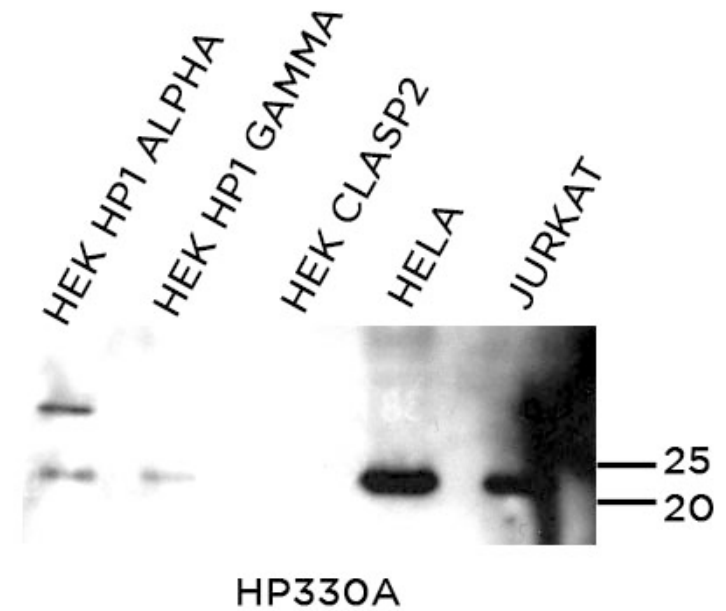
HP330A mAb is able to detect human HP1 $\alpha$  protein by WB.

**DILUTION** neat supernatant

**LANES**

Lane 1 Transfected Hek-V5-HP1 $\alpha$	(10ug) (+)
Lane 2 Transfected Hek-V5-HP1 $\gamma$	(10ug) (-)
Lane 3 Transfected Hek-GFP-Clasp2	(10ug) (-)
Lane 4 Hela cell line	(100ug) (+)
Lane 5 Jurkat cell line	(100ug) (+)

Protein predicted molecular weight: **22kDa**

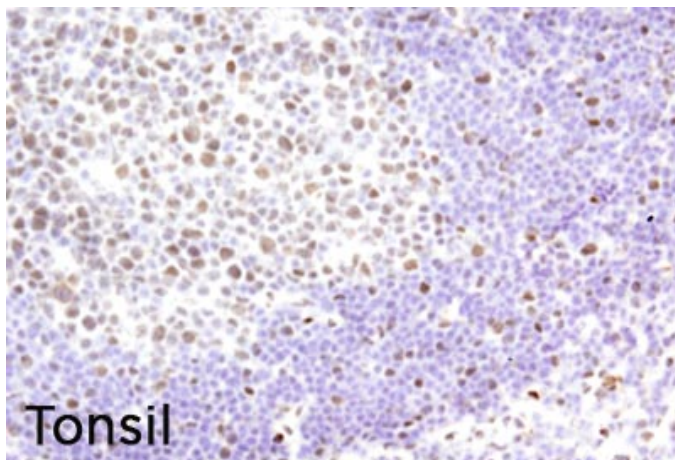


● | IHC-F | **Immunohistochemistry (frozen)**

HP330A mAb can be used to detect HP1 $\alpha$  protein in human frozen tissues.

**TISSUE SAMPLE** Tonsil

**DILUTION** 1:20



● | IHC-P | **Immunohistochemistry (paraffin)**

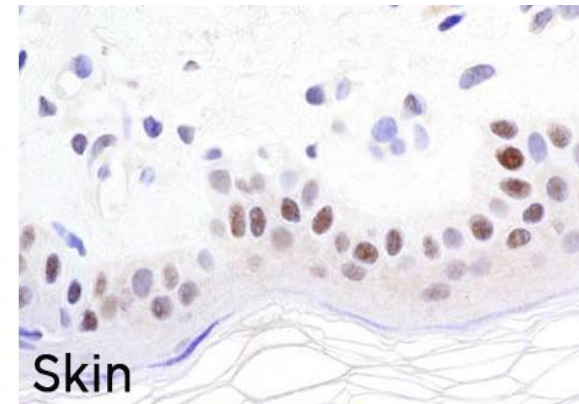
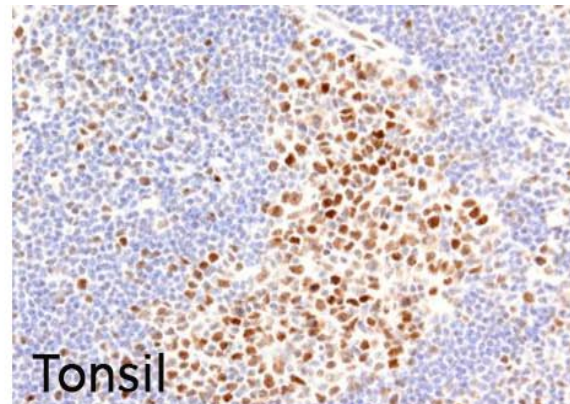
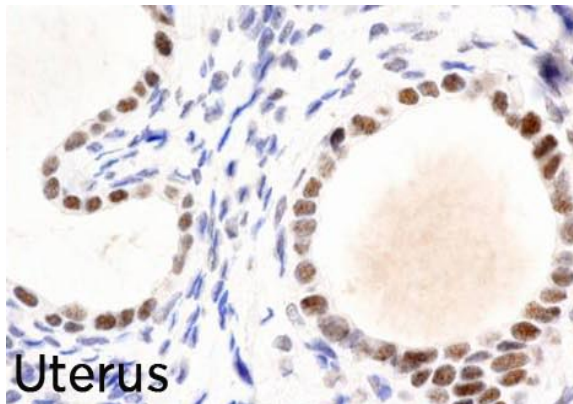
HP330A mAb can be used to detect HP1 $\alpha$  protein in human paraffin tissues

**TISSUE SAMPLE** Uterus, Tonsil and Skin

**DILUTION** 1:20

**ANT. RETRIEVAL** 20 minutes ER2 (Tris-EDTA)

**DETECTION SYSTEM** Novolink kit (BondMax Leica)

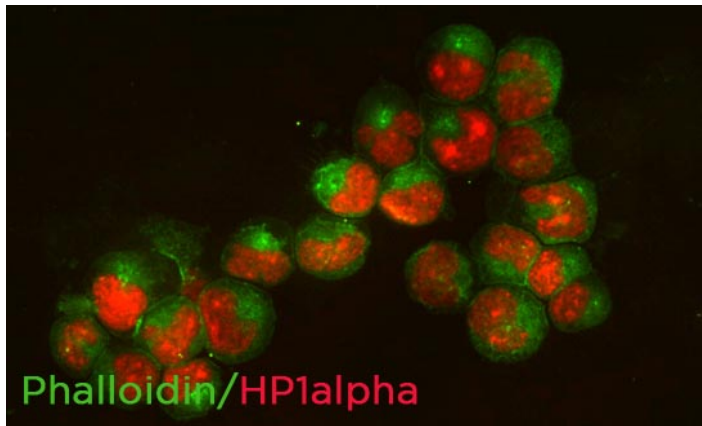


● | IF | **Immunofluorescence (paraffin)**

HP330A mAb can be used to detect HP1 $\alpha$  protein by immunofluorescence

**TISSUE SAMPLE** Ramos cell line

**DILUTION** 1:10



● | FC | **Flow Cytometry** Not Tested

● | IP | **Immunoprecipitation** Not Tested

**SOLD BY:** Abcam