

HLA DPB1-DRB1 | Validation File

TARGET Homo sapiens major histocompatibility complex, class II

CLONE NAME JS76A

DESCRIPTION mouse monoclonal

ANTIGEN USED Human Karpas 299 cell line

ISOTYPE IgG1

SPECIES REACTIVITY human

LOCALIZATION cytoplasm

POSITIVE CONTROL breast tumor

STORAGE BUFFER Tissue culture supernatant: 0.02% sodium azide

STORAGE Aliquot and store at 4C. Do not freeze

 Recommended

 Inconclusive

 Not Recommended

 Not Tested

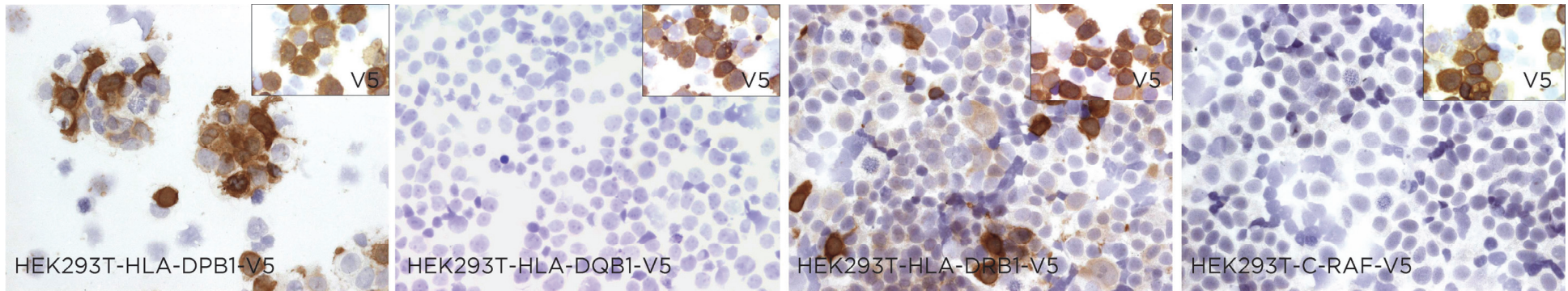
APPLICATIONS

● | ICC | *Immunocytochemistry*

JS76A is able to detect human HLA protein in immunocytochemistry

DILUTION neat supernatant

To confirm that JS76A mAb recognizes human HLA protein, immunocytochemistry on frozen cytospin preparations of V5-HLA-DPB1, V5-HLA-DQB1 and V5-HLA-DRB1 expressed in HEK293T cell line was performed. HEK-C-RAF transfected cells were used as negative control.



● | WB | **Western Blotting**

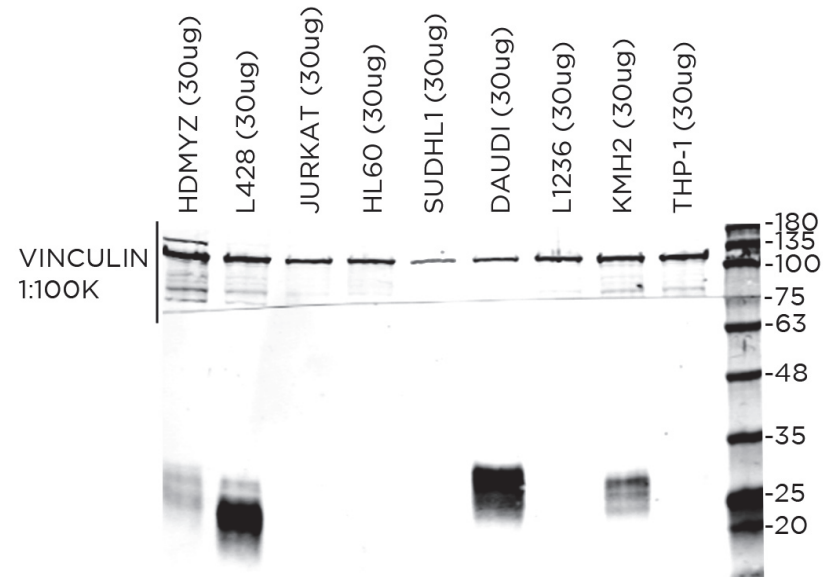
JS76A mAb is able to detect human HLA DPB1-DRB1 protein by WB.

DILUTION neat supernatant

Predicted molecular weight: **30kDa**
Observed molecular weight: **30kDa**

LANES

Lane 1	HDMYZ cell line	(30ug)	(+)
Lane 2	L428 cell line	(30ug)	(+)
Lane 3	JURKAT cell line	(30ug)	(-)
Lane 4	HL60 cell line	(30ug)	(-)
Lane 5	SUDHL1 cell line	(30ug)	(-)
Lane 6	DAUDI cell line	(30ug)	(+)
Lane 7	L1236 cell line	(30ug)	(-)
Lane 8	KMH2 cell line	(30ug)	(+)
Lane 9	THP-1 cell line	(30ug)	(-)

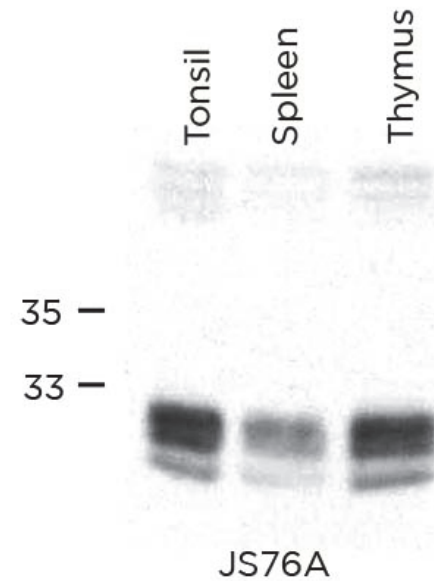


● | IP | **Immunoprecipitation**

JS76A mAb is able to detect human HLA DPB1-DRB1 protein by IP.

RESULTS

Immunoprecipitation of protein extract from human tonsil, spleen and thymus with JS76A mAb (30ul/IP) followed by western blotting with the same antibody.



● | IHC-P | **Immunohistochemistry (paraffin)**

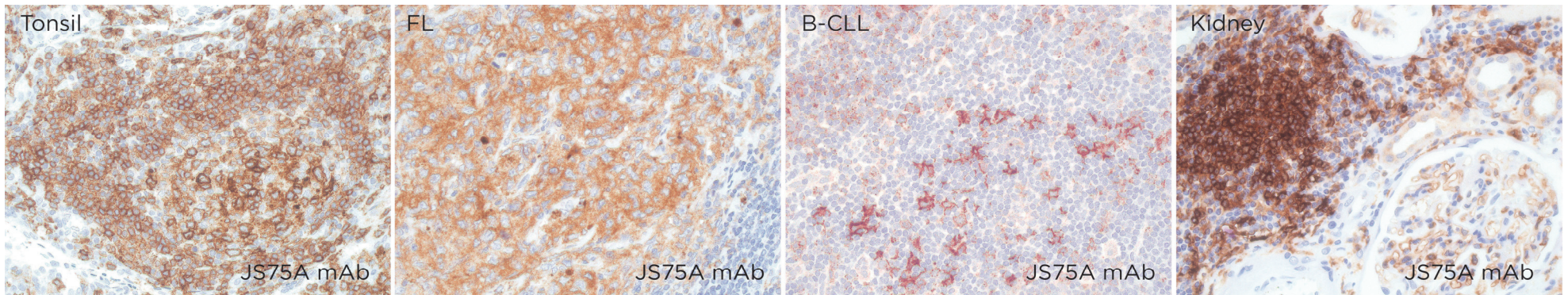
JS76A mAb can be used to detect HLA DPB1-DRB1 protein in human paraffin tissues

TISSUE SAMPLE Human lymphomas and testicle

DILUTION 1:100

ANT. RETRIEVAL 20 minutes ER2 (Tris-EDTA)

DETECTION SYSTEM Novolink kit (BondMax Leica)

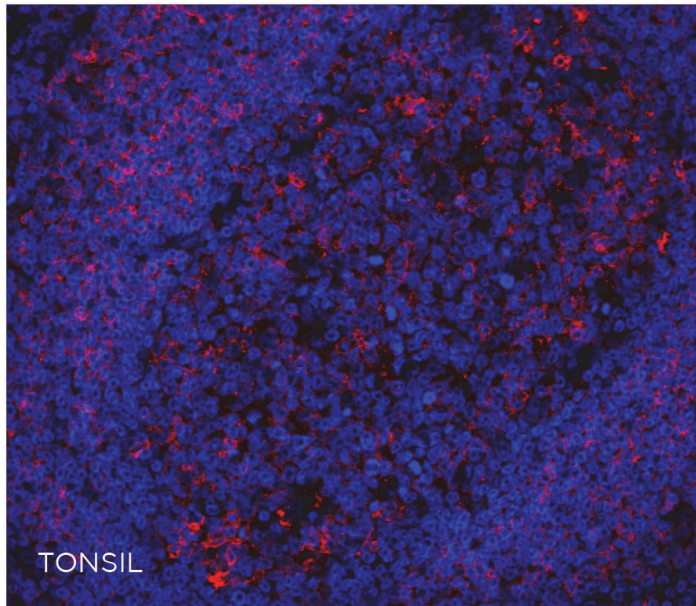


● | IF | **Immunofluorescence (paraffin)**

JS76A mAb can be used to detect HLA protein by immunofluorescence

TISSUE SAMPLE Human tonsil

DILUTION neat supernatant (RED)



● | IHC-F | **Immunohistochemistry (frozen)** Not tested

● | FC | **Flow Cytometry** Not tested

SOLD BY: Abcam