

GST | Validation File

TARGET GST (Glutathione-S-transferase)

CLONE NAME HP45B

DESCRIPTION rat monoclonal

ANTIGEN USED GST-HP1 alpha and GST-HP1 gamma recombinant proteins

ISOTYPE IgG2a

SPECIES REACTIVITY Parasitic helminth Schistosoma japonicum

LOCALIZATION not expressed in mammary tissues

POSITIVE CONTROL GST protein

STORAGE BUFFER Tissue culture supernatant: 0.02% sodium azide

STORAGE Aliquot and store at 4C. Do not freeze

 Recommended

 Inconclusive

 Not Recommended

 Not Tested

APPLICATIONS

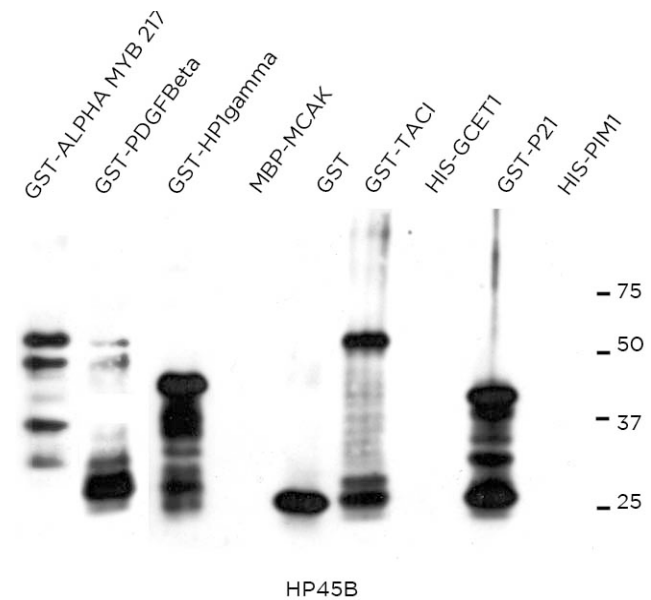
● | WB | **Western Blotting**

HP45B mAb is able to detect GST protein by WB.

DILUTION 1:100

LANES

Lane 1	GST-alpha MYB 217 recombinant protein	(0,1ug) (+)	52kDa
Lane 2	GST-PDGFBeta recombinant protein	(0,1ug) (+)	50kDa
Lane 3	GST- HP1 gamma recombinant protein	(0,1ug) (+)	47kDa
Lane 4	MBP-MCAK recombinant protein	(0,1ug) (-)	
Lane 5	GST protein	(0,1ug) (+)	26kDa
Lane 6	GST-TACI recombinant protein	(0,1ug) (+)	57kDa
Lane 7	His-GCET1 recombinant protein	(0,1ug) (-)	
Lane 8	GST-P21 recombinant protein	(0,1ug) (+)	47kDa
Lane 9	His-PIM1 recombinant protein	(0,1ug) (-)	



- | IHC-F | **Immunohistochemistry (frozen)** Not Recommended
- | ICC | **Immunocytochemistry** Not Tested
- | IHC-P | **Immunohistochemistry (paraffin)** Not Recommended
- | IF | **Immunofluorescence (paraffin)** Not Recommended
- | FC | **Flow Cytometry** Not Tested
- | IP | **Immunoprecipitation** Not Tested