

GCET1| Validation File

TARGET GCET1 (Serine proteinase inhibitor A11/Germinal center B cell expressed transcript 1/Serpina9)

CLONE NAME RAM341B

DESCRIPTION mouse monoclonal

ANTIGEN USED His-GCET1 recombinant protein (full-length protein)

ISOTYPE IgG1

SPECIES REACTIVITY human

LOCALIZATION cytoplasm

POSITIVE CONTROL Tonsil

STORAGE BUFFER Tissue culture supernatant: 0.02% sodium azide

STORAGE Aliquot and store at 4C. Do not freeze

 Recommended

 Inconclusive

 Not Recommended

 Not Tested

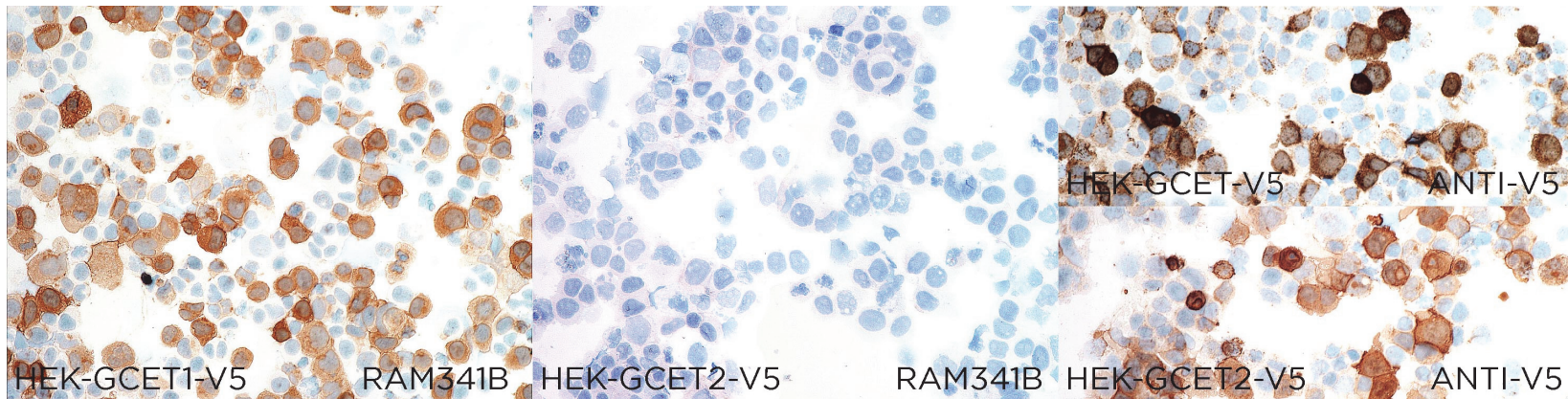
APPLICATIONS

● | CC | *Immunocytochemistry*

RAM341B mAb is able to detect mouse GCET1 protein in immunocytochemistry

DILUTION no dilution (neat supernatant)

To confirm that RAM mAb recognizes human GCET1 protein, immunohistochemistry on frozen cytopins preparations of V5-tagged human GCET1 expressed in HEK293T was performed. Cytopsin preparation of V5-tagged human GCET2 protein was used as a negative control. Labeling with the anti-V5 mAb confirmed the efficiency of transfection.



● | WB | **Western Blotting**

RAM341B mAb is able to detect mouse GCET1 protein by WB.

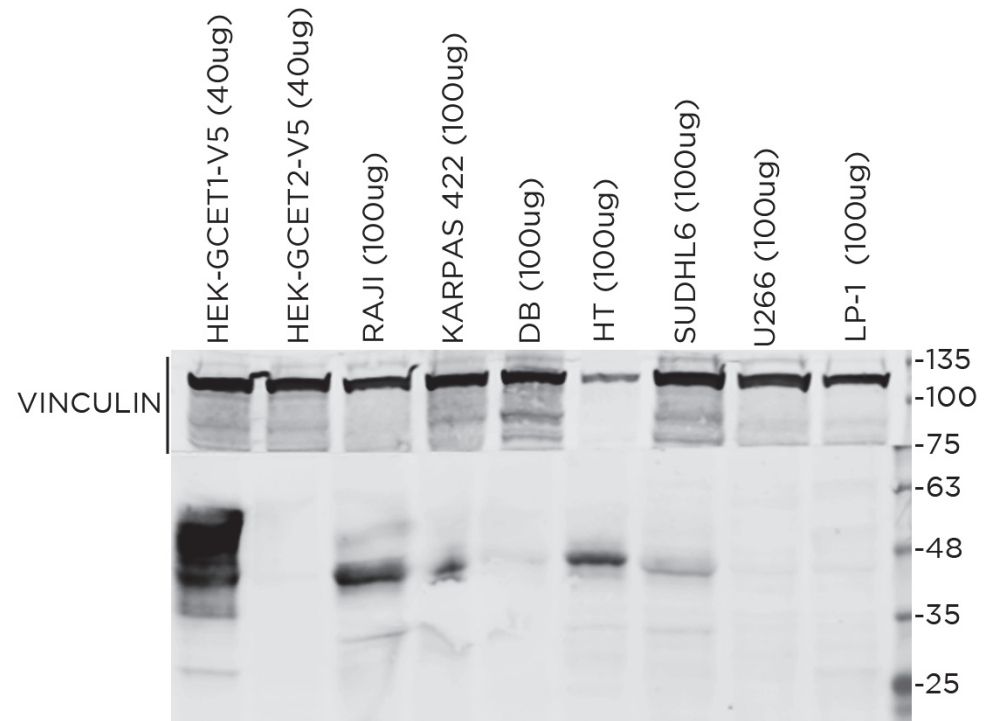
DILUTION: 1:200 purified mAb (1mg/ml)

Predicted molecular weight: **48kDa**

Observed molecular weight: **48kDa**

LANES

Lane 1	HEK-GCET1-V5	(40µg) (+)
Lane 2	HEK-GCET2-V5	(40µg) (-)
Lane 3	RAJI cell line	(100µg) (+)
Lane 4	KARPAS 422 cell line	(100µg) (+)
Lane 5	DB cell line	(100µg) (+)
Lane 6	HT cell line	(100µg) (+)
Lane 7	SUDHL6 cell line	(100µg) (+)
Lane 8	U266 cell line	(100µg) (-)
Lane 9	LP-1 cell line	(100µg) (-)



● | IHC-P | **Immunohistochemistry** (paraffin)

RAM341B mAb is able to detect mouse GCET1 protein in human paraffin tissues

TISSUE SAMPLE Human tonsil, Burkitt, follicular and DLBCL lymphomas.

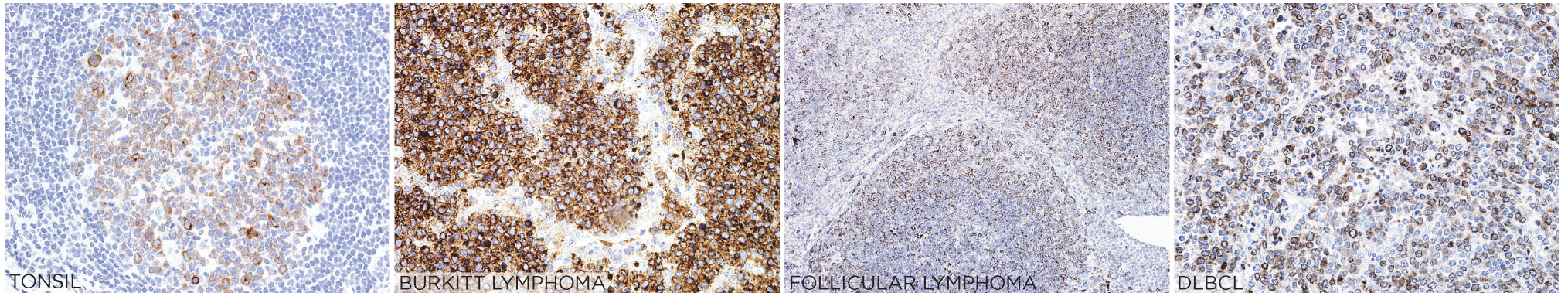
DILUTION 1:2 (supernatant)

1:50 purified antibody (1mg/ml)

ANT. RETRIEVAL 20 minutes ER2 (Tris-EDTA)

Ab INCUBATION 30 minutes

DETECTION SYSTEM Novolink kit (BondMax Leica)



● | IF | **Immunofluorescence (paraffin)** Not Recommended

● | IP | **Immunoprecipitation** Not Tested

● | IHC-F | **Immunohistochemistry (frozen)** Not Recommended

● | FC | **Flow Cytometry** Not Tested

SOLD BY Abcam

REFERENCES

Gcet1 (centerin), a highly restricted marker for a subset of germinal center-derived lymphomas. Montes-Moreno S, Roncador G, Maestre L, Martínez N, Sanchez-Verde L, Camacho FI, Cannata J, Martinez-Torrecedrada JL, Shen Y, Chan WC, Piris MA. Blood. 2008 1;111(1):351-8.

Nam-Cha SH, Montes-Moreno S, Salcedo MT, Sanjuan J, Garcia JF and Piris MA. Lymphocyte-rich classical Hodgkin's lymphoma: distinctive tumor and microenvironment markers. Modern Pathology (2009) 22, 1006-1015.

Anna Sebestyén, Tamás B Sticz, Agnes Márk, Melinda Hajdu, Botond Timár, Karolina Nemes, Noemi Nagy, Zsófia Váradi, László Kopper. Activity and complexes of mTOR in diffuse large B-cell lymphomas--a tissue microarray study. Modern Pathology : An Official Journal of the United States and Canadian Academy of Pathology, Inc. 1 December 2012.

Davide Rossi, Valeria Spina, Francesco Forconi, Daniela Capello, Marco Fangazio, Silvia Rasi, Maurizio Martini, Valter Gattei, Antonio Ramponi, Luigi M Larocca, Francesco Bertoni, Gianluca Gaïdano. Molecular history of Richter syndrome: origin from a cell already present at the time of chronic lymphocytic leukemia diagnosis. International Journal of Cancer. 15 June 2012.

Leonard Hwan-Cheong Tan, Soo-Yong Tan. Aberrant immunoarchitecture distinguishes hyperplastic germinal centres in pattern 1 angioimmunoblastic T-cell lymphoma from reactive follicles. Hematological Oncology. 1 September 2014.

Yi Xie, Mohmad Ajaz Bulbul, Lingyun Ji, Casey M Inouye, Susan G Groshen, Anil Tulpule, Dennis P O'Malley, Endi Wang, Imran N Siddiqi. p53 expression is a strong marker of inferior survival in de novo diffuse large B-cell lymphoma and may have enhanced negative effect with MYC coexpression: a single institutional clinicopathologic study. American Journal of Clinical Pathology. 1 April 2014.