

GAPDH | Validation File

TARGET Human GAPDH (glyceraldehyde-3-phosphate dehydrogenase)

CLONE NAME FF26A

DESCRIPTION rat monoclonal

ANTIGEN human CD4+ lymphocytes

ISOTYPE IgG1

SPECIES REACTIVITY Human and mouse

LOCALIZATION nuclear

POSITIVE CONTROL Tonsil

STORAGE BUFFER Tissue culture supernatant: 0.02% sodium azide
Purified antibody: PBS plus 1%BSA and 0.02% sodium azide. MAb concentration: 1mg/ml

STORAGE Aliquot and store at 4C. Do not freeze

 Recommended

 Inconclusive

 Not Recommended

 Not Tested

APPLICATIONS

● | WB | Western Blotting

FF26A mAb is able to detect human and mouse GAPDH protein by WB.

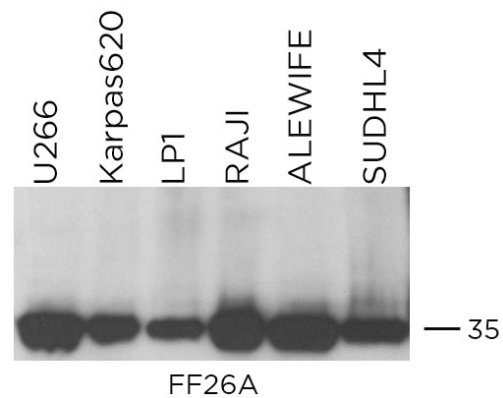
DILUTION no dilution (neat supernatant)
1:3000 purified antibody

Predicted molecular weight: **36kDa**

Observed molecular weight: **36kDa**

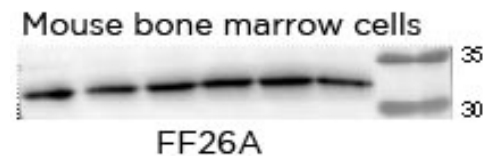
WB1 LANES

Lane 1 U266 cell line	(100ug) (+)
Lane 2 Karpas620 cell line	(100ug) (+)
Lane 3 LP1 cell line	(100ug) (+)
Lane 4 RAJI cell line	(100ug) (+)
Lane 5 ALEWIFE cell line	(100ug) (+)
Lane 6 SUDHL4 cell line	(100ug) (+)



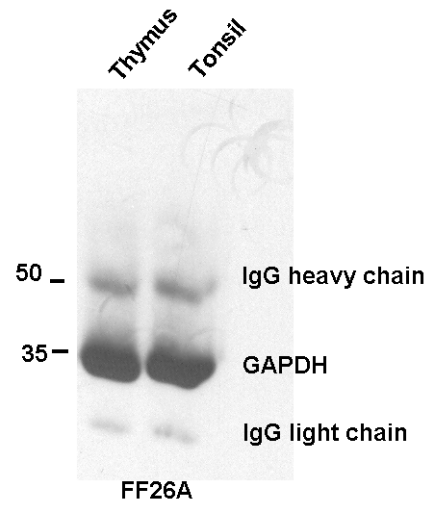
WB2 LANES

Lane 1-6 Mouse bone marrow cells (100ug) (+)



● | IP | Immunoprecipitation

FF26A mAb is able to detect GAPDH protein by IP.



Immunoprecipitation of protein extracts (300ug/IP) from human thymus and tonsil with FF26A mAb (30ul/IP) followed by western blotting with the same antibody.

● | IHC-P | **Immunohistochemistry (paraffin)**

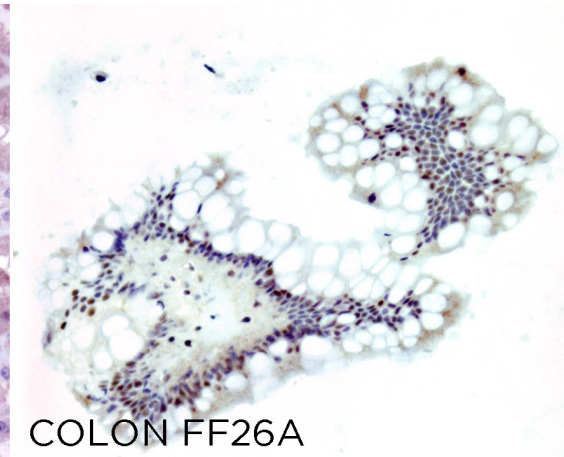
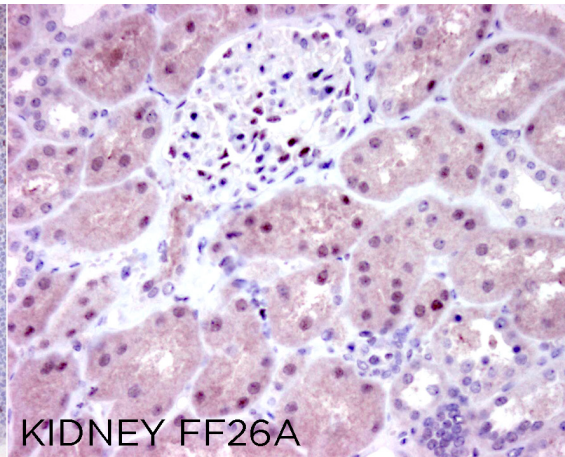
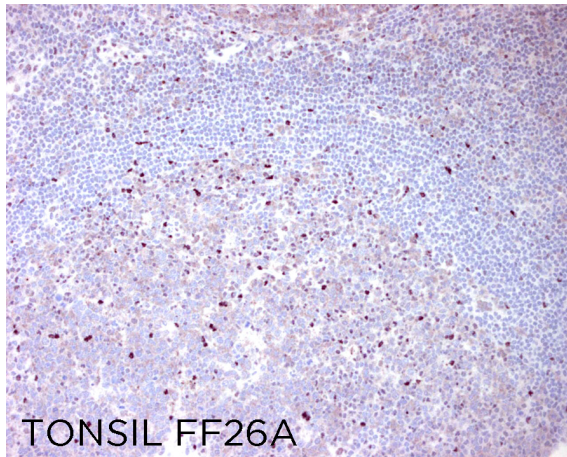
FF26A mAb is able to detect GAPDH protein in human paraffin tissues

TISSUE SAMPLE human tonsil, kidney and colon.

DILUTION 1:2 (supernatant)

ANT. RETRIEVAL 20 minutes ER2 (Tris-EDTA)

DETECTION SYSTEM Novolink kit (BondMax Leica)



● | ICC | **Immunocytochemistry** Not Tested

● | IHC-F | **Immunohistochemistry (frozen)** Not Tested

● | IF | **Immunofluorescence (paraffin)** Not Tested

● | FC | **Flow Cytometry** Not Tested

SOLD BY: Biolegend and eBioscience

REFERENCES (more than 20 citations)

Ong SM, Hadadi E, Dang TM, Yeap WH, Tan CT, Ng TP, Larbi A, Wong SC. The pro-inflammatory phenotype of the human non-classical monocyte subset is attributed to senescence. *Cell Death Dis.* 2018 Feb 15;9(3):266.

Dragoj M, Bankovic J, Sereti E, Stojanov SJ, Dimas K, Pesic M, Stankovic T. Anti-invasive effects of CXCR4 and FAK inhibitors in non-small cell lung carcinomas with mutually inactivated p53 and PTEN tumor suppressors. *Invest New Drugs.* 2017 Dec;35(6):718-732.

Ruehle S, Wager-Miller J, Straiker A, Farnsworth J, Murphy MN, Loch S, Monory K, Mackie K, Lutz B. Discovery and characterization of two novel CB1 receptor splice variants with modified N-termini in mouse. *J Neurochem.* 2017 Aug;142(4):521-533.

DiFranco KM, Johnson-Farley N, Bertino JR, Elson D, Vega BA, Belinka BA Jr, Kachlany SC. LFA-1-targeting Leukotoxin (LtxA; Leukothera®) causes lymphoma tumor regression in a humanized mouse model and requires caspase-8 and Fas to kill malignant lymphocytes. *Leuk Res.* 2015 Jun;39(6):649-56. doi: 10.1016/j.leukres.2015.03.010. Epub 2015 Mar 21.

Butin-Israeli V, Adam SA, Jain N, Otte GL, Neems D, Wiesmüller L, Berger SL, Goldman RD. Role of lamin b1 in chromatin instability. *Mol Cell Biol.* 2015 Mar;35(5):884-98.

Liu CC, Leclair P, Yap SQ, Lim CJ. The Membrane-Proximal KXGFFKR Motif of α -Integrin Mediates Chemoresistance. *Molecular and Cellular Biology* on 1 November 2013.

Chen CY, Jan YH, Juan YH, Yang CJ, Huang MS, Yu CJ, Yang PC, Hsiao M, Hsu TL, Wong CH. Fucosyltransferase 8 as a functional regulator of nonsmall cell lung cancer. *Proceedings of the National Academy of Sciences of the United States of America* on 8 January 2013.

Zou L, Cao S, Kang N, Huebert RC, Shah VH. Fibronectin induces endothelial cell migration through β 1 integrin and Src-dependent phosphorylation of fibroblast growth factor receptor-1 at tyrosines 653/654 and 766. *The Journal of Biological Chemistry* on 2 March 2012.

Maestre L, Tooze R, Cañamero M, Montes-Moreno S, Ramos R, Doody G, Boll M, Barrans S, Baena S, Piris MA, Roncador G. XBP1(S) provides a specific marker of stress response and plasma cell differentiation. *Haematologica* 2009 Mar; 94(3):419-22. Epub 2009 Jan 27.

Aparicio T, Guillou E, Coloma J, Montoya G and Méndez J. The GINS complex interacts with Cdc45 and MCM proteins and is essential for S phase progression in human cells. *Nucleic Acids Res.* 2009 Apr;37(7):2087-95. Epub 2009 Feb 17.