

ESTROGEN RECEPTOR ALPHA | Validation File

TARGET Estrogen receptor alpha

CLONE NAME CRET94D

DESCRIPTION mouse monoclonal

ANTIGEN USED MBP-CRE-ERT recombinant protein

ISOTYPE IgG1

SPECIES REACTIVITY human and mouse

LOCALIZATION nuclear

POSITIVE CONTROL tonsil


STORAGE BUFFER Tissue culture supernatant: 0.02% sodium azide

STORAGE Aliquot and store at 4C. Do not freeze

 Recommended

 Inconclusive

 Not Recommended

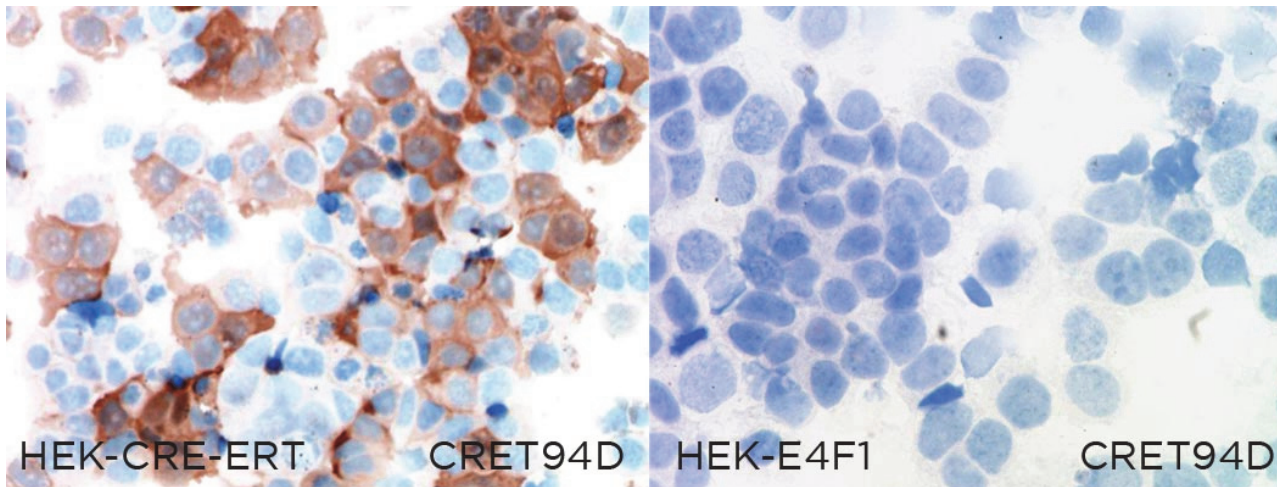
 Not Tested

APPLICATIONS

● | ICC | *Immunocytochemistry*

CRET94D mAb is able to detect human Estrogen receptor protein in immunocytochemistry

To confirm that CRET94D mAb recognizes human Estrogen receptor protein, immunocytochemistry on frozen cytospin preparations of CRE-ERT expressed in HEK293T was performed. Cytospin preparation of E4F1 transfected cells was used as negative control.



● | WB | **Western Blotting**

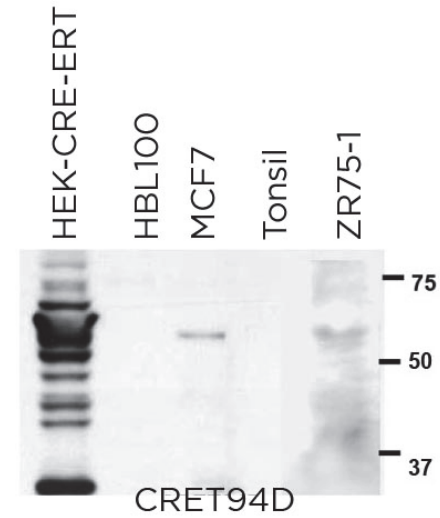
CRET94D mAb is able to detect human Estrogen receptor protein by WB.

DILUTION 1:5 supernatant

Predicted molecular weight: 66kDa
Observed molecular weight: 66kDa

LANES

Lane 1 Hek-CRE-ERT	(20ug) (+)
Lane 2 HBL100 cell line	(100ug) (-)
Lane 3 MCF7 cell line	(100ug) (+)
Lane 4 Human tonsil	(100ug) (-)
Lane 5 ZR75-1 cell line (human breast carcinoma)	(100ug) (+)



LANES

Lane 1 Mouse uterus wt	(100ug) (+)
Lane 2 Mouse uterus KO Estrogen Receptor Alpha	(100ug) (-)
Lane 3 Mouse uterus KO Estrogen Receptor Beta	(100ug) (+)



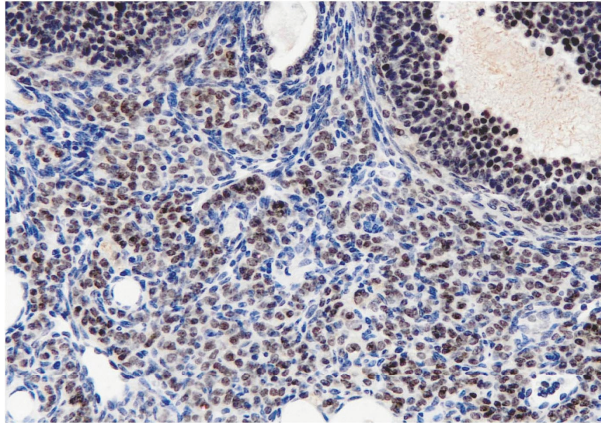
● |M-IHC-P | **Immunohistochemistry (paraffin)**

CRET94D mAb is able to detect mouse Estrogen receptor protein in paraffin tissues

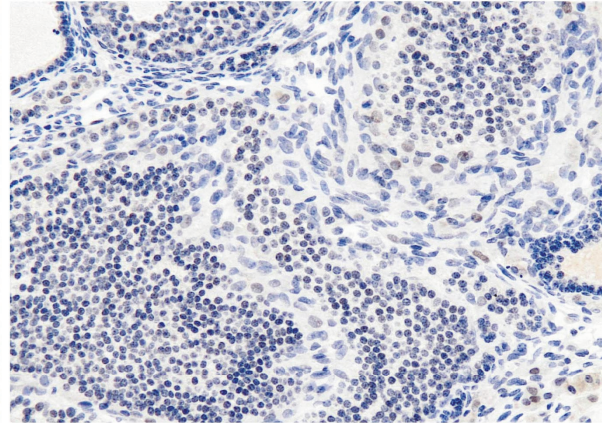
TISSUE SAMPLE mouse ovary (wt, KO beta subunit and KO alpha subunit)

DILUTION no dilution (neat supernatant)

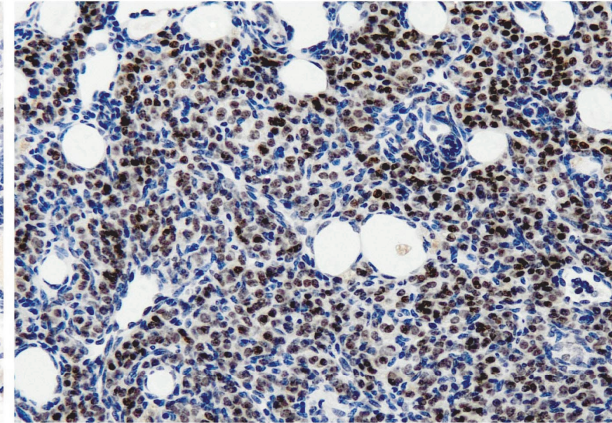
DETECTION SYSTEM OminMap Standard RiboCC No Heat (Ventana)



mouse ovary



mouse ER alpha KO ovary



mouse ER beta KO ovary

● | IHC-P | **Immunohistochemistry (paraffin)**

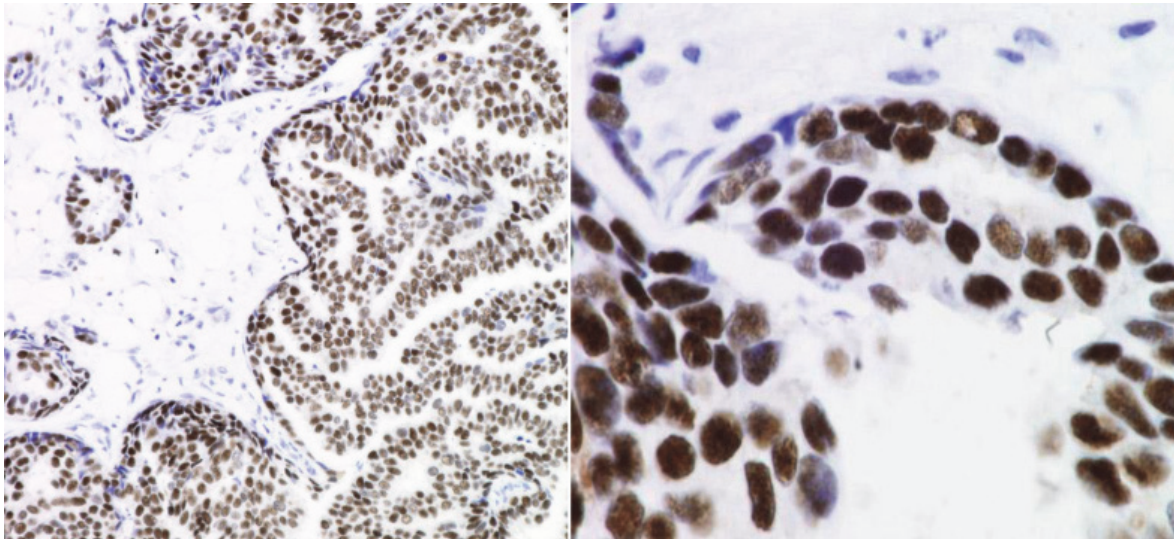
CRET94D mAb is able to detect human Estrogen receptor protein in paraffin tissues

TISSUE SAMPLE Human breast cancer

DILUTION 1:40 (supernatant)

ANT. RETRIEVAL 20 minutes ER2 (Tris-EDTA)

DETECTION SYSTEM Novolink kit (BondMax Leica)



Human breast cancer

Human breast cancer

- | IP | **Immunoprecipitation** Not Tested
- | IHC-F | **Immunohistochemistry (frozen)** Not Tested
- | IF | **Immunofluorescence (paraffin)** Not Tested
- | FC | **Flow Cytometry** Not Tested

SOLD BY Abcam