

## ***E4F1 | Validation File***

**TARGET** E4F1

**CLONE NAME** 272G

**DESCRIPTION** mouse monoclonal

**ANTIGEN USED** GST-E4F1 recombinant protein

**ISOTYPE** IgG1

**SPECIES REACTIVITY** human

**LOCALIZATION** nuclear

**POSITIVE CONTROL** tonsil

**STORAGE BUFFER** Tissue culture supernatant: 0.02% sodium azide

**STORAGE** Aliquot and store at 4C. Do not freeze



Recommended



Inconclusive



Not Recommended



Not Tested

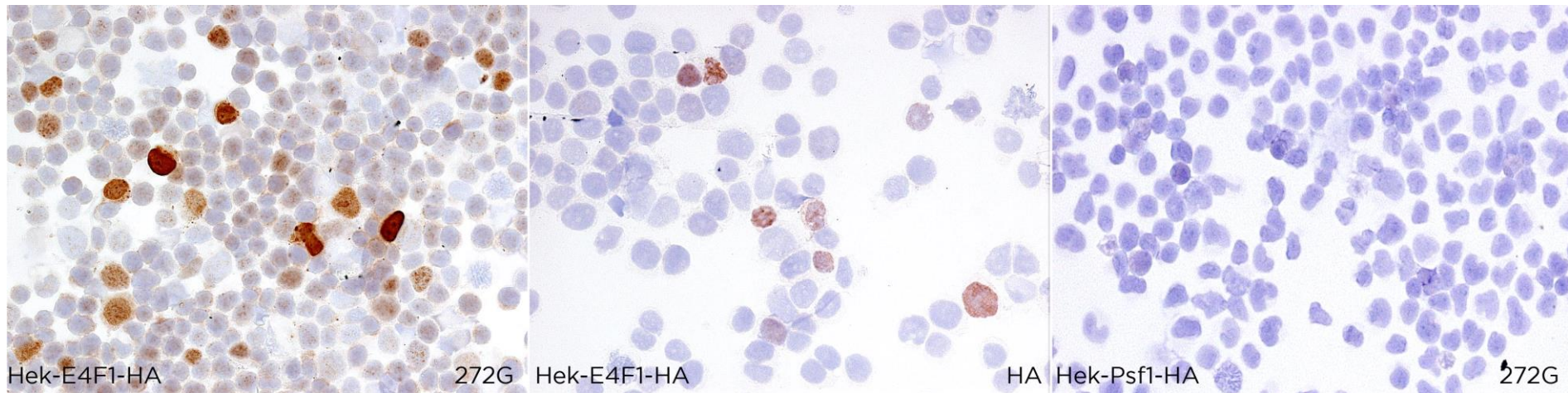
# APPLICATIONS

## ● | ICC | *Immunocytochemistry*

272G mAb is able to detect human E4F1 protein in immunocytochemistry

DILUTION neat supernatant

To confirm that 272G mAb recognizes human E4F1 protein, immunocytochemistry on frozen cytospin preparations of HA-tagged E4F1 expressed in HEK293T was performed. Cytospin preparation of Psf1 transfected cells was used as negative control.



## ● | WB | **Western Blotting**

272G mAb is able to detect human E4F1 protein by WB.

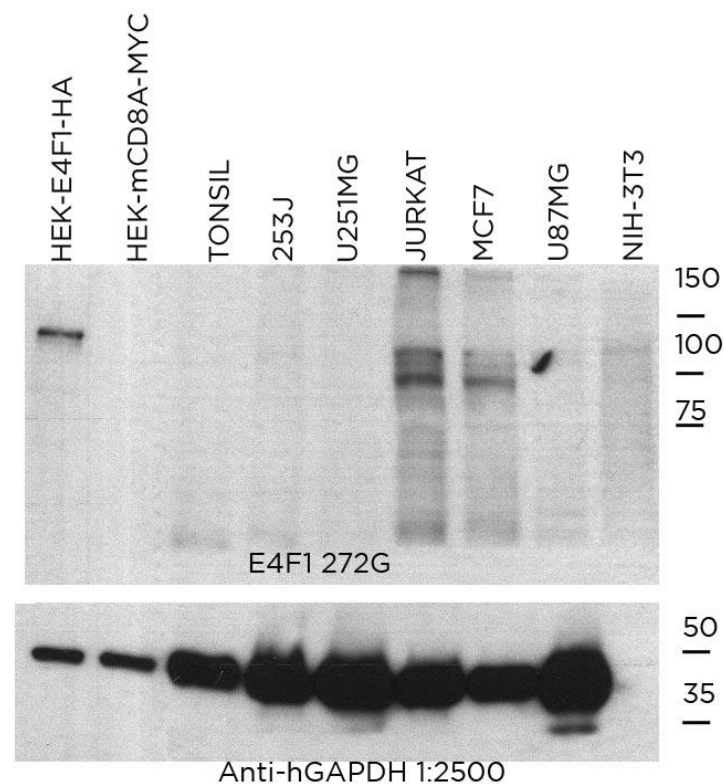
**DILUTION** neat supernatant

Predicted molecular weight: **83kDa**  
Observed molecular weight: **83kDa**

### **LANES**

Lane 1	HEK-E4F1-HA	(10ug) (+)
Lane 2	HEK-mCD8A-MYC	(10ug) (-)
Lane 3	Human tonsil	(100ug) (-)
Lane 4	253J cell line	(100ug) (-)
Lane 5	U251MG cell line	(100ug) (-)
Lane 6	Jurkat cell line	(100ug) (+)
Lane 7	MCF7 cell line	(100ug) (+)
Lane 8	U87MG cell line	(100ug) (-)
Lane 9	NIH-3T3 cell line	(100ug) (-)

Anti-GAPDH was used as loading control

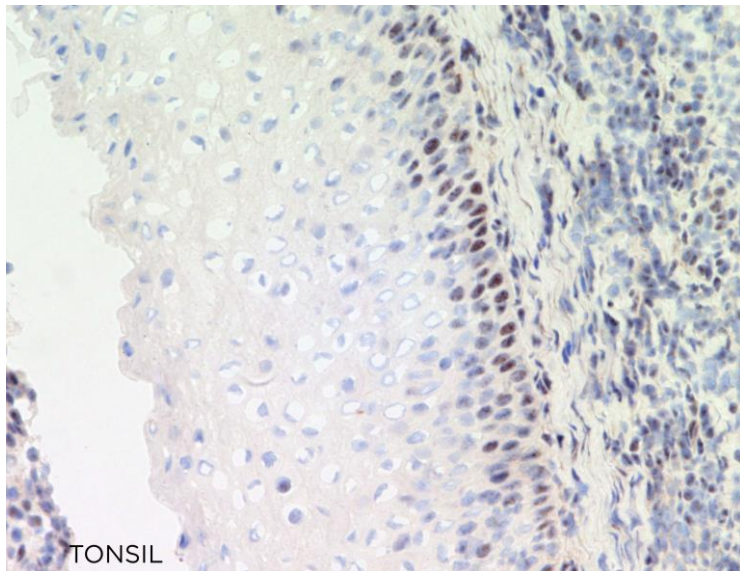


● | IHC-F | ***Immunohistochemistry (frozen)***

272G mAb can be used to detect E4F1 protein in human frozen tissues.

**TISSUE SAMPLE** human tonsil

**DILUTION** neat supernatant





● | IHC-P | **Immunohistochemistry (paraffin)**

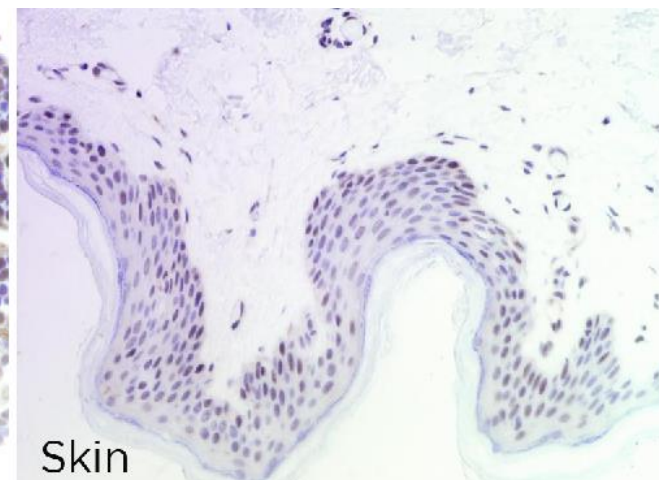
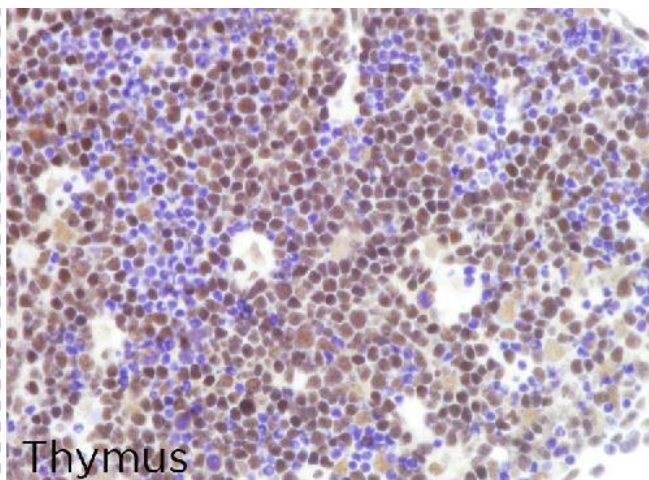
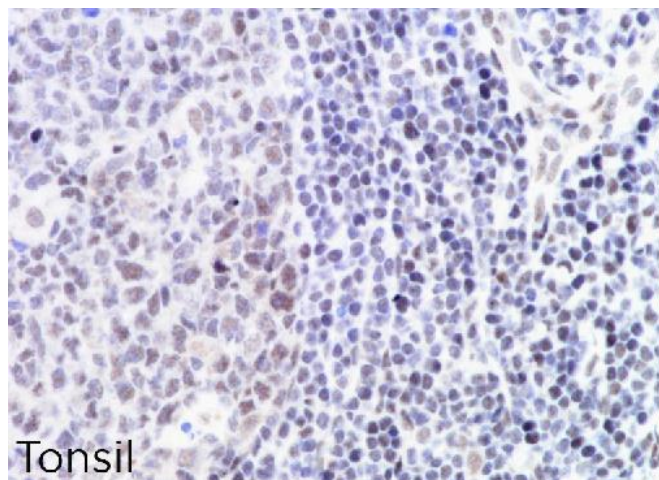
272G mAb can be used to detect E4F1 protein in human paraffin tissues

**TISSUE SAMPLE** Human tonsil, thymus and skin

**DILUTION** 1:15 supernatant

**ANT. RETRIEVAL** 20 minutes ER2 (Tris-EDTA)

**DETECTION SYSTEM** Novolink kit (BondMax Leica)



● | FC | **Flow Cytometry** Not tested

● | IP | **Immunoprecipitation** Not tested

● | IF | **Immunofluorescence (paraffin)** Not tested