

CTCF | Validation File

TARGET CTCF/Transcriptional repressor CTCF

CLONE NAME MARS327C

DESCRIPTION Rat monoclonal

ANTIGEN USED His-GST-hCTCF aa574-727

ISOTYPE IgG2C

SPECIES REACTIVITY Human and mouse

LOCALIZATION Nuclear

POSITIVE CONTROL Tonsil

STORAGE BUFFER Tissue culture supernatant: 0.02% sodium azide

STORAGE Aliquot and store at 4°C. Do not freeze



Recommended



Inconclusive



Not Recommended



Not Tested

APPLICATIONS

● | WB | **Western Blotting**

MARS327C mAb is able to detect human and mouse CTCF proteins by WB.

DILUTION neat supernatant

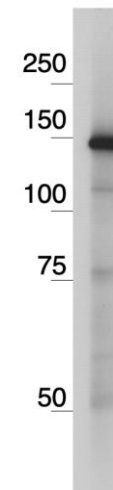
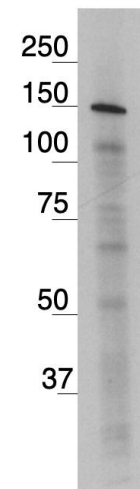
Predicted MW: 83 kDa
Observed MW: 140 kDa

Lane 1 HeLa nuclear extract

Lane 2 Total extract from mouse embryo fibroblast

(15g) (+)

(2x10⁵)(+)



● | IP | **Immunoprecipitation**

MARS327C mAb is able to Immunoprecipitate endogenous CTCF protein from a human cell extract.

Lane 1 Input-HeLa nuclear extract

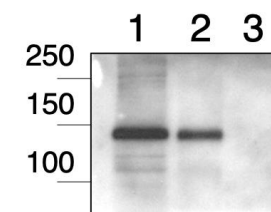
Lane 2 Immunoprecipitate obtained from HeLa nuclear extract with 10 μ l MARS327C

Lane 3 Immunoprecipitate obtained from HeLa nuclear extract with 10 μ l unrelated rat mAb

(10 μ g) (+)

(200ug) (+)

(200ug) (-)



Lane 1 Input (mouse embryo fibroblast (MEF) total extract

Lane 2 Supernatant after incubation with unrelated rat monoclonal antibody

Lane 3 Supernatant after incubation with MARS327C

Lane 4 Supernatant after incubation with unrelated rabbit polyclonal antibody

Lane 5 Immunoprecipitate obtained from 90 μ l mouse cell extract with 10 μ l unrelated rat mAb

Lane 6 Immunoprecipitate obtained from 90 μ l mouse cell extract with 10 μ l MARS327C

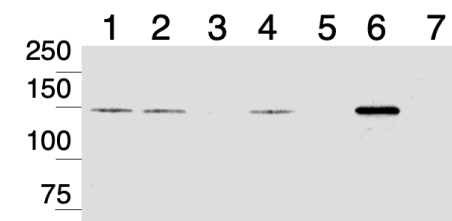
Lane 7 Immunoprecipitate obtained from 90 μ l mouse cell extract with 4 μ g of unrelated rpA

(50 μ g) (+)

(760ug) (-)

(760ug) (+)

(760ug) (-)



● | IHC-P | ***Immunohistochemistry (paraffin)***

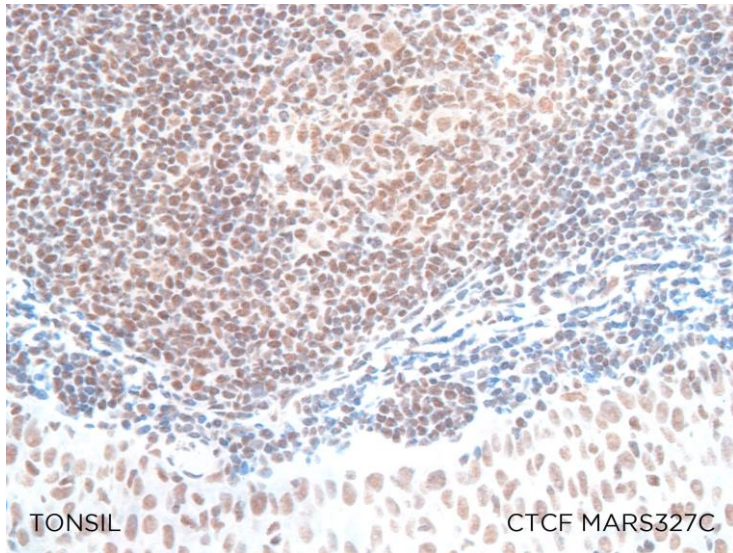
MARS327C mAb can be used to detect CTCF protein in human paraffin tissues

TISSUE SAMPLE Tonsil

DILUTION neat supernatant

ANT. RETRIEVAL 20 minutes ER2 (Tris-EDTA)

DETECTION SYSTEM Novolink kit (BondMax Leica)

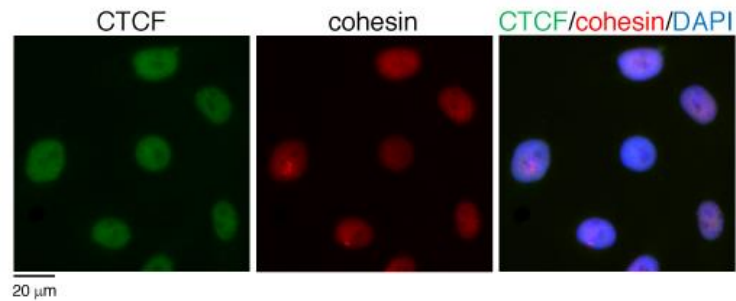


● | IF | **Immunofluorescence**

MARS327C mAb can be used to detect CTCF protein by immunofluorescence

TISSUE SAMPLE HeLa cells fixed in paraformaldehyde 2% and permeabilized with 0.2% Triton X-100

DILUTION neat supernatant

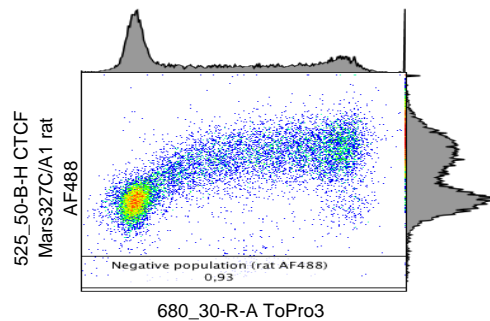


● | FC | **Flow Cytometry**

MARS327C mAb can be used to detect human CTCF protein by flow cytometry

SAMPLE HeLa cells

DILUTION 1:2



● | IHC-F | **Immunohistochemistry (frozen)** Not Tested