

mCsf1r | Validation File

TARGET mouse Csf1r

CLONE NAME YEYE311D

DESCRIPTION rat monoclonal

ANTIGEN USED RBL1-mCSF1R-myc transfected cells

ISOTYPE IgG1

SPECIES REACTIVITY mouse

LOCALIZATION membrane

POSITIVE CONTROL mouse spleen

STORAGE BUFFER Tissue culture supernatant: 0.02% sodium azide

Purified antibody: PBS plus 1%BSA and 0.02% sodium azide. MAb concentration: 1mg/ml

STORAGE Aliquot and store at 4C. Do not freeze

 Recommended

 Inconclusive

 Not Recommended

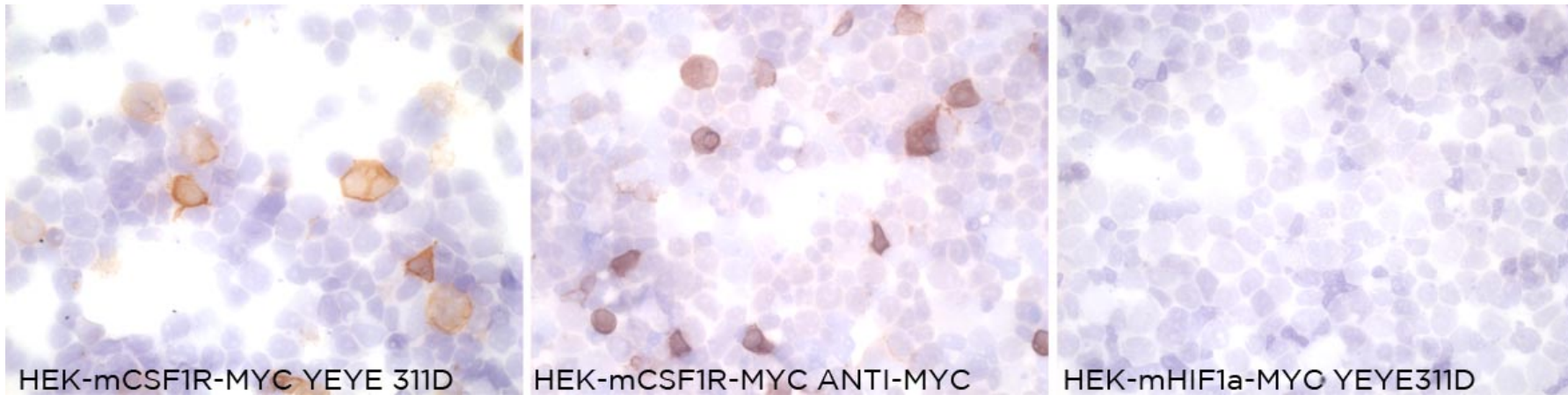
 Not Tested

APPLICATIONS

● | ICC | Immunocytochemistry

YEYE311 mAb is able to detect mouse Csf1r protein in immunocytochemistry

To confirm that YEYE311 mAb recognizes mouse Csf1r protein, immunocytochemistry on frozen cytopins preparation of mouse Csf1r expressed in HEK293T was performed. Anti-MYC Ab was used as a positive control. Cytopsin preparation of mouse HIF1A protein was used as negative control.



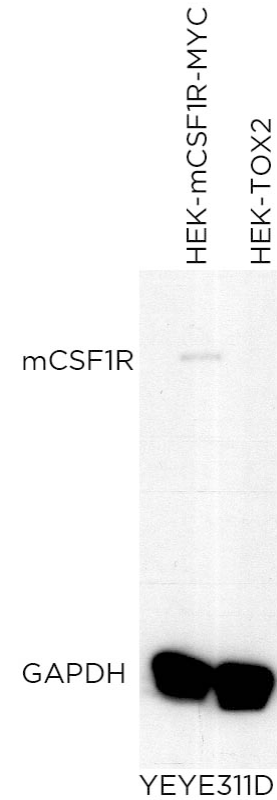
● | WB | **Western Blotting**

YEYE311D mAb is able to detect mouse Csf1r over expression by WB. Further validation experiments have to be done to confirm antibody specificity in this application.

DILUTION no dilution (neat supernatant)

Predicted molecular weight: 109KDa
Observed molecular weight: 109KDA

Lanes
Lane 1 HEK-mCsf1r-MYC (100ug) (+)
Lane 2 HEK-TOX2 (100ug) (-)



● | M-IHC-P | **Immunohistochemistry (paraffin)**

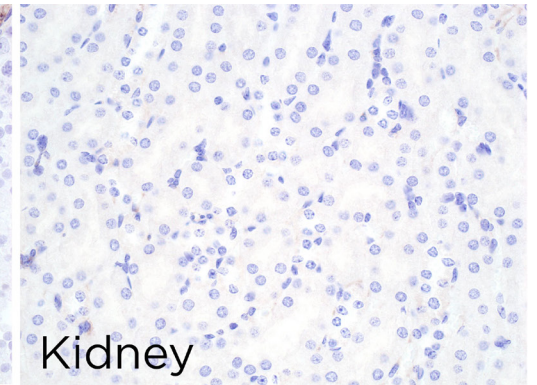
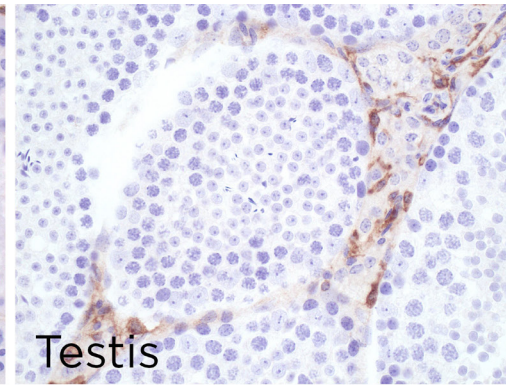
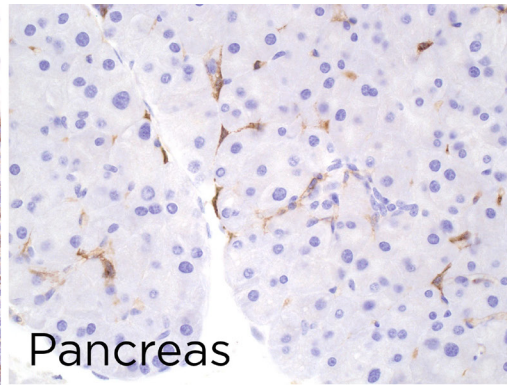
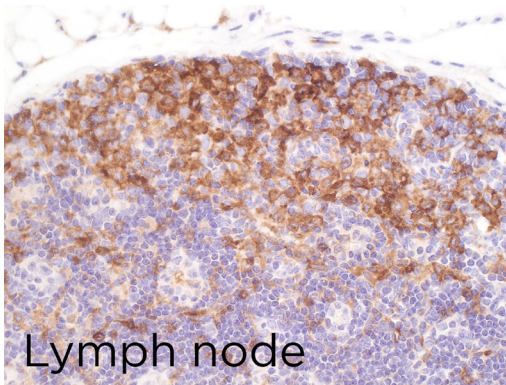
YEYE311D antibody can be used to detect mouse Csf1r protein in mouse paraffin tissues

TISSUE SAMPLE mouse lymph node, pancreas, testis and kidney

DILUTION 1:4 (neat supernatant)

ANT. RETRIEVAL High pH 9 (Tris-EDTA)

DETECTION SYSTEM Anti Rat + Novolink polymer



● | IP | **Immunoprecipitation** Not done

● | IHC-F | **Immunohistochemistry (frozen)** Not done

● | IF | **Immunofluorescence (paraffin)** Not done

● | FC | **Flow Cytometry** Not done