

CDK6 | *Validation File*

TARGET CDK6 (Cyclin dependent kinase 6)

CLONE NAME 98D

DESCRIPTION mouse monoclonal

ANTIGEN USED His-mCDK6 recombinant protein (full length)

ISOTYPE IgG1

SPECIES REACTIVITY human and mouse

LOCALIZATION nuclear, cytoplasmic

POSITIVE CONTROL tonsil

STORAGE BUFFER Tissue culture supernatant: 0.02% sodium azide

STORAGE Aliquot and store at 4C. Do not freeze

 Recommended

 Inconclusive

 Not Recommended

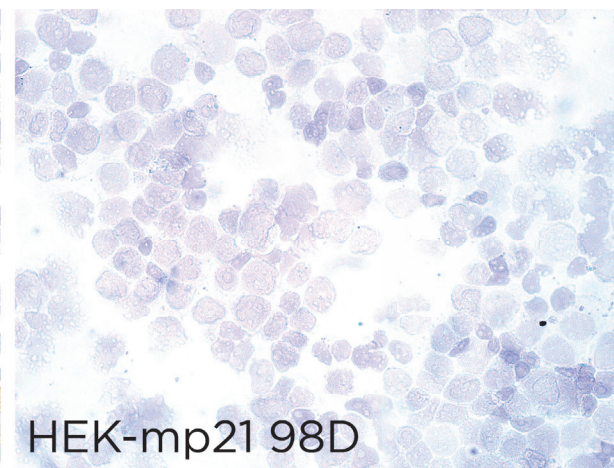
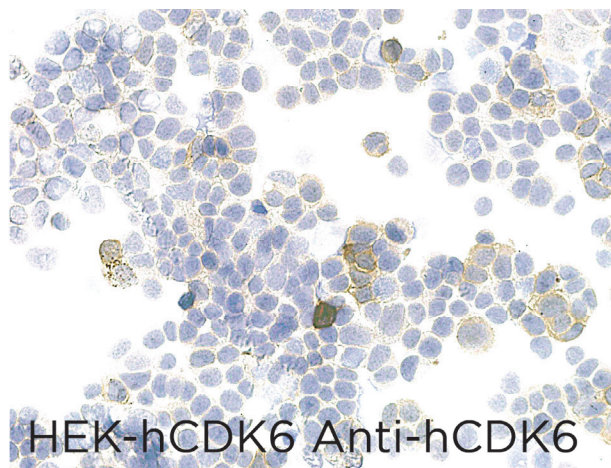
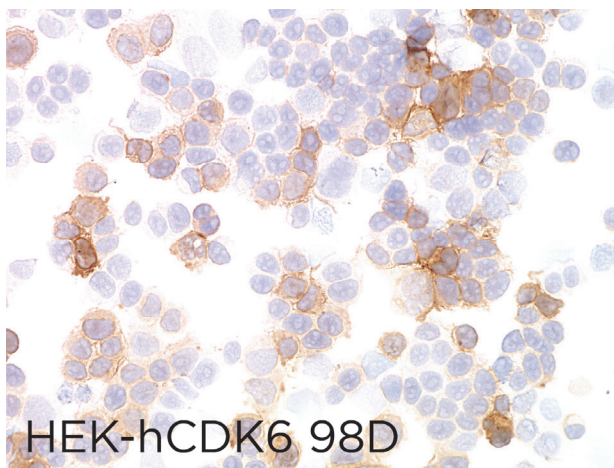
 Not Tested

APPLICATIONS

● | ICC | *Immunocytochemistry*

98D mAb is able to detect human CDK6 protein in immunocytochemistry.

To confirm that 98D mAb recognizes CDK6 protein, immunohistochemistry on frozen cytopsin preparations of V5-tagged human CDK6 expressed in HEK293T was performed. Cytopsin preparation of V5-tagged mouse p21 protein was used as a negative control.



● | WB | **Western Blotting**

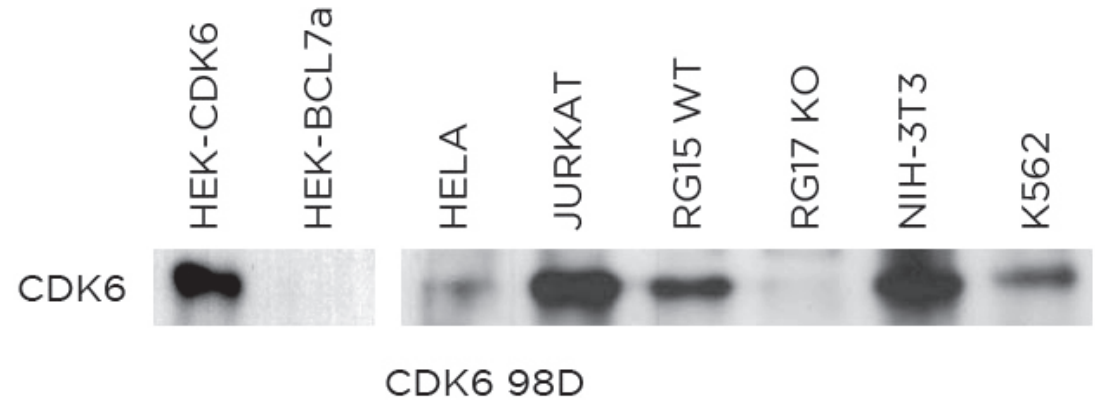
98D mAb is able to detect human CDK6 protein by WB

DILUTION no dilution (neat supernatant)

Predicted molecular weight: **37kDa**
Observed molecular weight: **37kDa**

LANES

Lane 1 Hek-CDK6 (20ug) (+)
Lane 2 Hek-BCL7C (20ug) (-)
Lane 3 Hela cell line (200ug) (-)
Lane 4 Jurkat cell line (200ug) (+)
Lane 5 RG15 WT cell line (200ug) (+)
Lane 6 RG17 KO cell line (200ug) (-)
Lane 7 3T3 cell line (200ug) (+)
Lane 8 K562 cell line (200ug) (+)



● | IHC-P | **Immunohistochemistry (paraffin)**

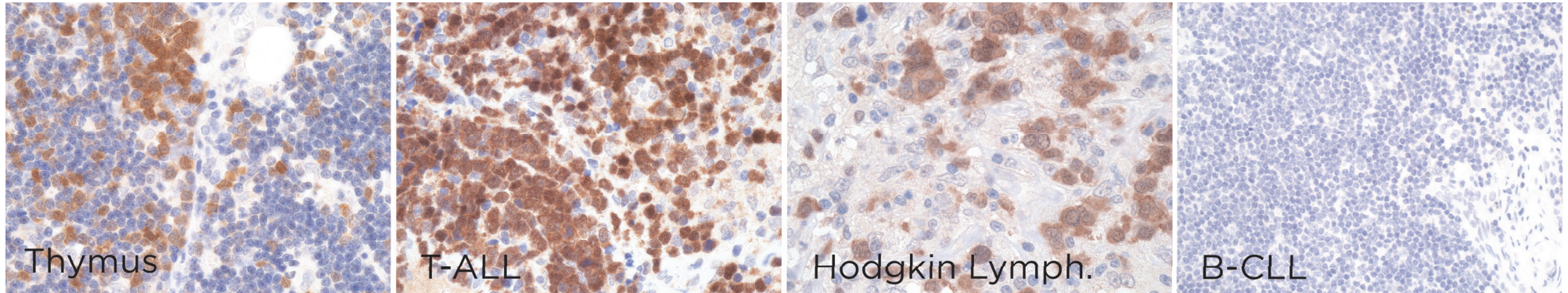
Antibody 98D can be used to detect CDK6 protein in human paraffin tissue

TISSUE SAMPLE Thymus, T-ALL, Hodgkin Lymphoma, B-CLL

DILUTION 1:5 (supernatant)

ANTIGEN RETRIEVAL 20 minutes ER2 (Tris-EDTA)

DETECTION SYSTEM Novolink kit (BondMax Leica)



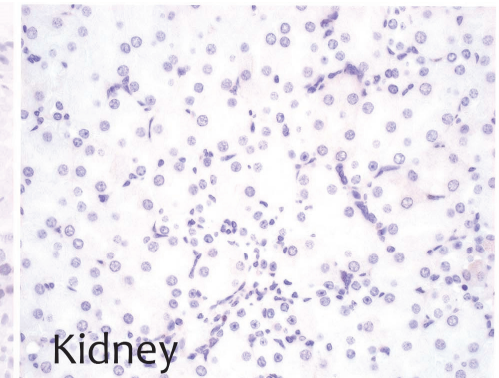
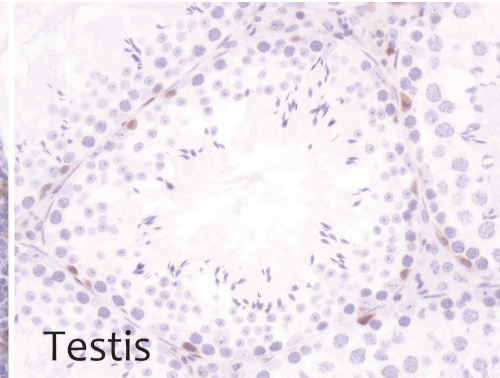
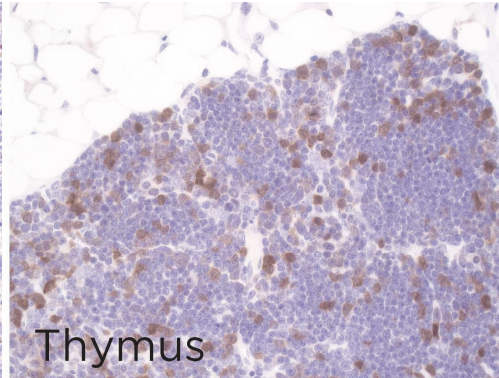
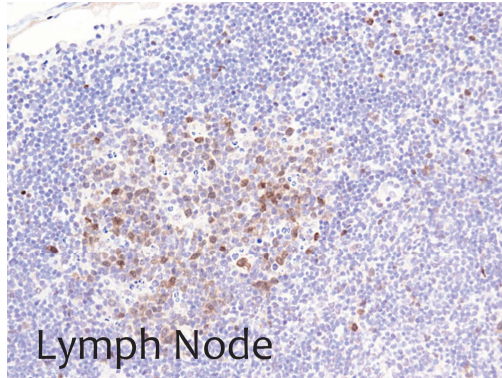
● | M-IHC-P | **Immunohistochemistry (paraffin)**

Antibody 98D can be used to detect CDK6 protein in mouse paraffin tissues.

TISSUE SAMPLE mouse lymph node, thymus, testis and kidney.

DILUTION no dilution (neat supernatant)

DETECTION SYSTEM OminMap Standard RiboCC No Heat (Ventana)



● | IF | **Immunofluorescence (paraffin)** Not done

● | FC | **Flow Cytometry** Not done

● | IHC-F | **Immunohistochemistry (frozen)** Not working

● | IP | **Immunoprecipitation** Not done

SOLD BY: Abcam