

## CDC25A | Validation File

**TARGET** CDC25A (M-phase inducer phosphatase 1)

**CLONE NAME** CAMI271C

**DESCRIPTION** rat monoclonal

**ANTIGEN USED** CDC25A-HIS (aa53-325) recombinant protein

**ISOTYPE** IgG2a

**SPECIES REACTIVITY** human

**LOCALIZATION** nuclear

**POSITIVE CONTROL** tonsil

**STORAGE BUFFER** Tissue culture supernatant: 0.02% sodium azide

Purified antibody: PBS plus 1%BSA and 0.02% sodium azide. MAb concentration: 1mg/ml

**STORAGE** Aliquot and store at 4C. Do not freeze

 Recommended

 Inconclusive

 Not Recommended

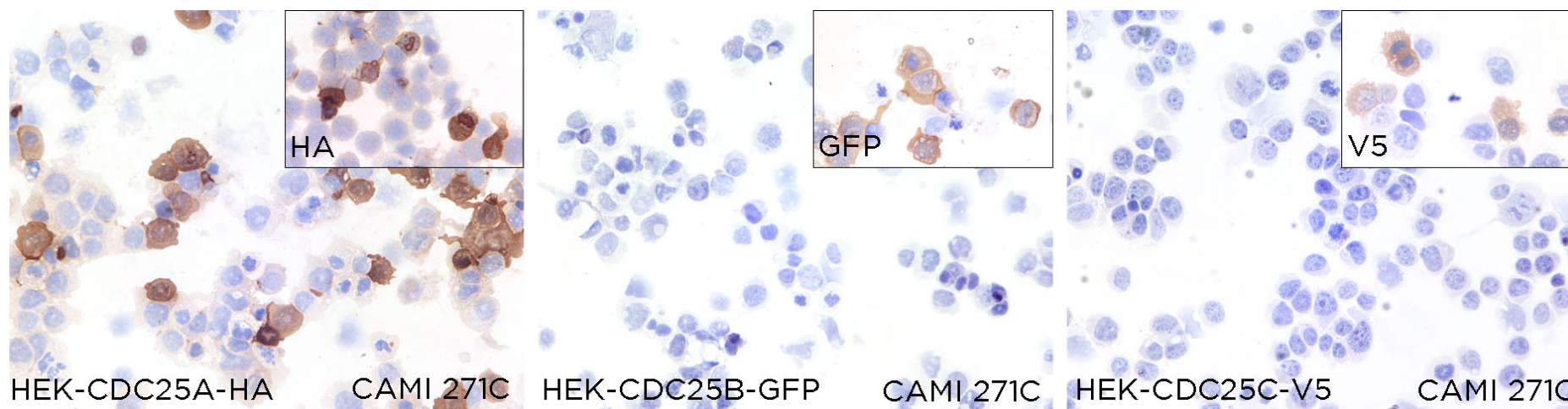
 Not Tested

# APPLICATIONS

## ● | ICC | Immunocytochemistry

CAMI271C mAb is able to detect human CDC25A protein in immunocytochemistry.

To confirm that CAMI271C mAb recognizes human CDC25A protein, immunocytochemistry on frozen cytopins preparations of HA-tagged CDC25A expressed in HEK293 was performed. Cytopsin preparations of human CDC25B and CDC25C protein were used as a negative control. Anti-HA, GFP and V5 antibodies were used as positive control.



● | WB | **Western Blotting**

CAM1271C mAb is able to detect human CDC25A protein by WB.

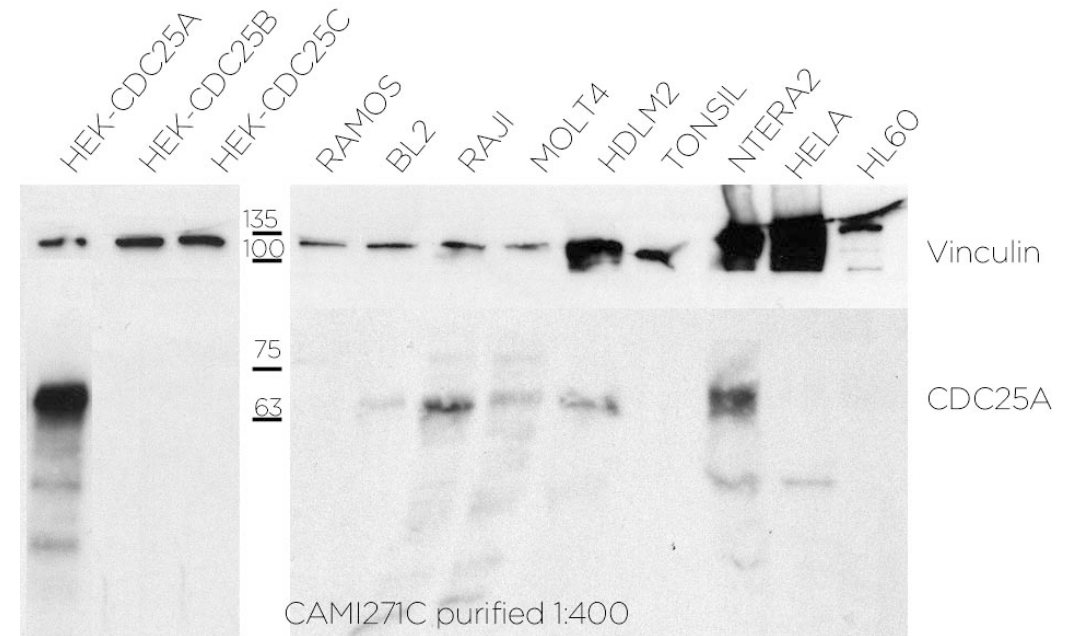
**DILUTION** 1:400 purified antibody (1mg/ml)

Predicted molecular weight: **59kDa**

Observed molecular weight: **68kDa**

**LANES**

Lane 1 HEK-CDC25A	(10ug) (+)
Lane 2 HEK-CDC25B	(10ug) (-)
Lane 3 HEK-CDC25C	(100ug) (-)
Lane 4 Ramos cell line	(100ug) (-)
Lane 5 BL2 cell line	(100ug) (+)
Lane 6 Raji cell line	(100ug) (+)
Lane 7 MOLT4 cell line	(100ug) (+)
Lane 8 HDLM2 cell line	(100ug) (+)
Lane 9 Human tonsil	(100ug) (-)
Lane 10 NTERA2 cell line	(100ug) (+)
Lane 11 Hela cell line	(100ug) (-)
Lane 12 HL60 cell line	(100ug) (-)



● | IHC-P | **Immunohistochemistry (paraffin)**

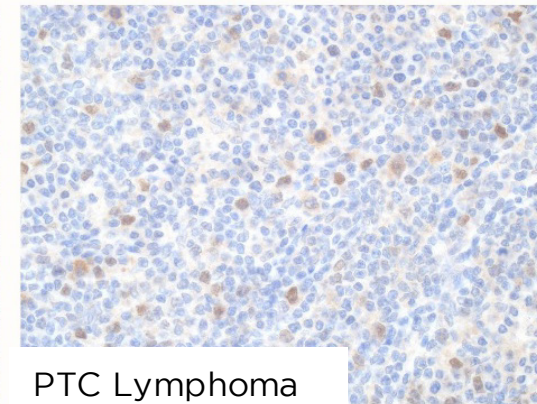
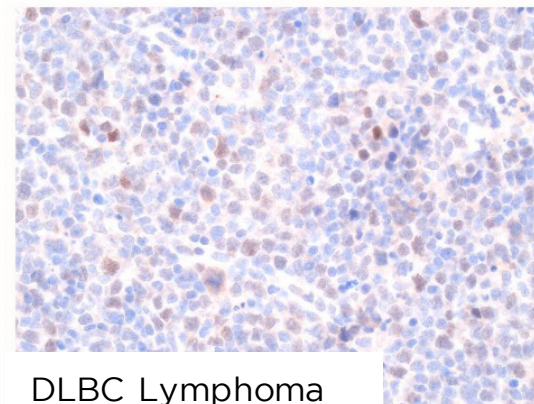
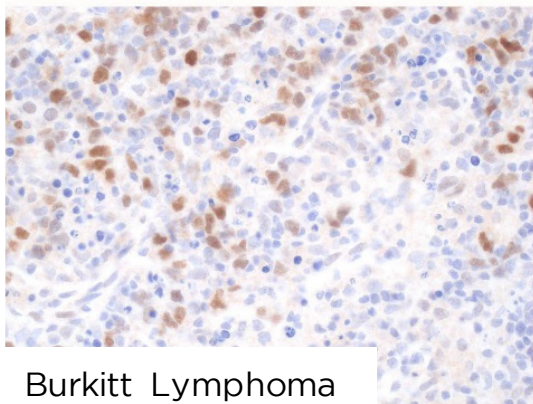
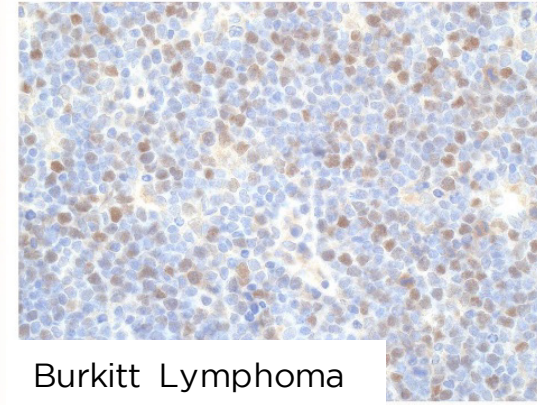
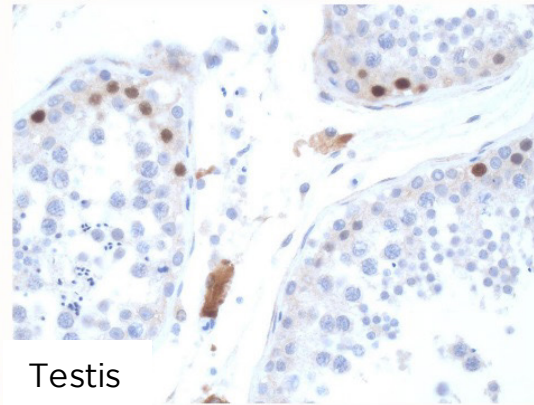
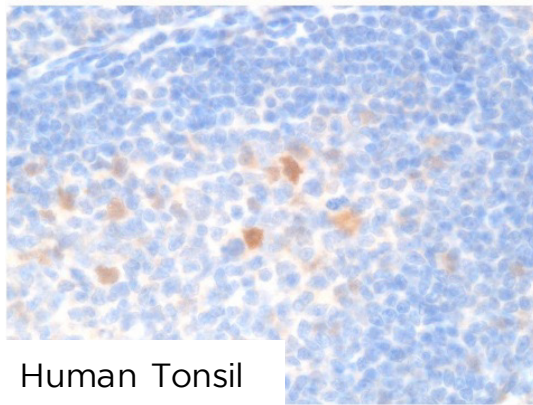
Antibody CAMI271C can be used to detect CDC25A protein in human paraffin tissues.

**TISSUE SAMPLE** human tonsil, testicle, Burkitt lymphoma, DLBCL and peripheral T cell lymphoma.

**DILUTION** 1:200 purified antibody (1mg/ml)

**ANTIGEN RETRIEVAL** 20 minutes ER2 (Tris-EDTA)

**DETECTION SYSTEM** Novolink kit (BondMax Leica)



- | IF | **Immunofluorescence (paraffin)** Not done
- | FC | **Flow Cytometry** Not done
- | IHC-F | **Immunohistochemistry (frozen)** Not done
- | IP | **Immunoprecipitation** Not done