

CD8A | *Validation File*

TARGET human CD8A NP001759-3 (CD8 Antigen, alpha polypeptide)

CLONE NAME NOR 132H

DESCRIPTION rat monoclonal

ANTIGEN USED HIS-CD8a (NP001759-3) recombinant protein

ISOTYPE IgG2a

SPECIES REACTIVITY human

LOCALIZATION membrane

POSITIVE CONTROL tonsil

STORAGE BUFFER Tissue culture supernatant: 0.02% sodium azide

STORAGE Aliquot and store at 4C. Do not freeze

 Recommended

 Inconclusive

 Not Recommended

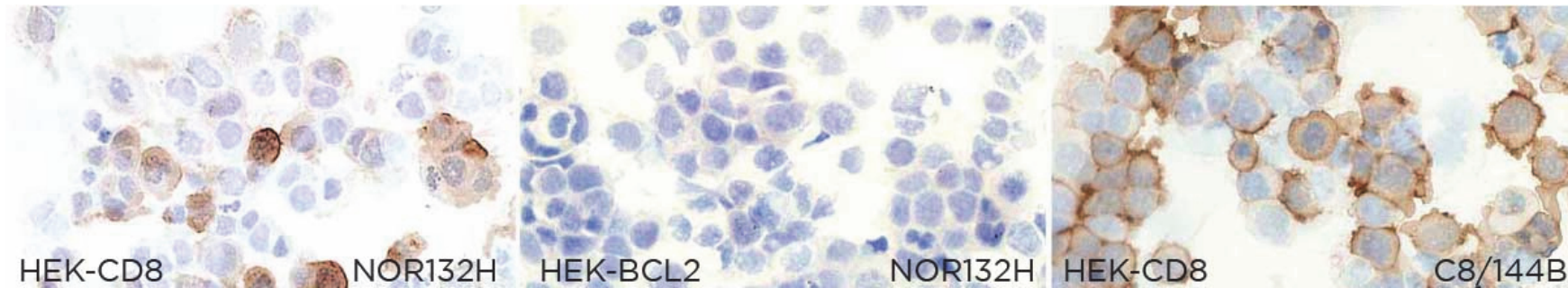
 Not Tested

APPLICATIONS

● | ICC | *Immunocytochemistry*

NOR132H mAb is able to detect human CD8A protein in immunocytochemistry

To confirm that NOR132H mAb recognizes human CD8 protein, immunocytochemistry on frozen cytospin preparations of human CD8 expressed in HEK293 was performed. Cytospin preparation of human BCL2 protein was used as a negative control. Labeling with CD8 (clone C8/144B) antibody was used as positive control.



● | WB | **Western Blotting**

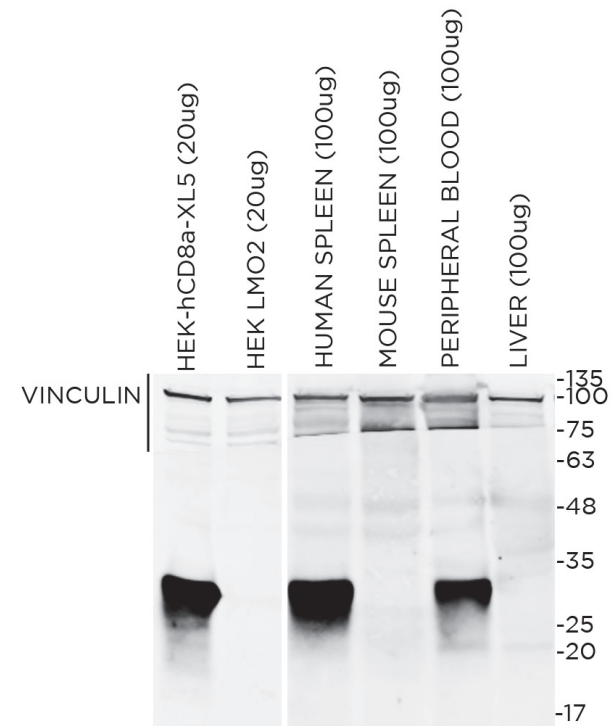
NOR132H mAb is able to detect human CD8 protein by WB.

DILUTION NOR132H no dilution (neat supernatant)
CD8 mAb (clone C8/144B) no dilution (neat supernatant)

Predicted molecular weight: **30kDa**
Observed molecular weight: **30kDa**

LANES

Lane 1 Hek-CD8A	(20ug) (+)
Lane 2 Hek-LMO2	(20ug) (-)
Lane 3 Human spleen	(100ug) (+)
Lane 4 Mouse spleen	(100ug) (-)
Lane 5 Peripheral Blood	(100ug) (+)
Lane 6 Human Liver	(100ug) (-)

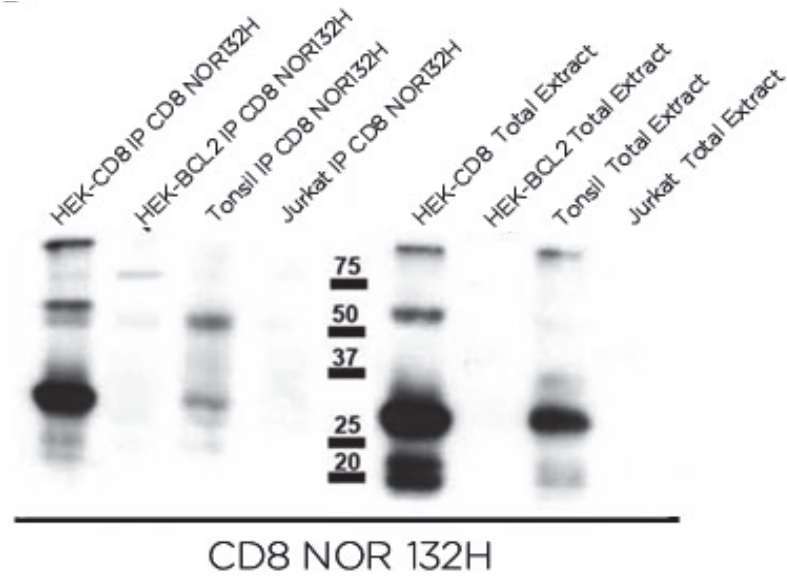


● | IP | **Immunoprecipitation**

NOR132H antibody can be used to immunoprecipitate CD8A protein.

Immunoprecipitation of protein extracts from HEK-CD8, HEK-Bcl2, Tonsil and Jurkat with CD8 NOR132H followed by western blotting with CD8 NOR132H (left part of the image) and western blotting of total extracts on the right part of the image.

DILUTION 40ul of supernatant for each IP and no dilution (neat supernatant) for the WB.



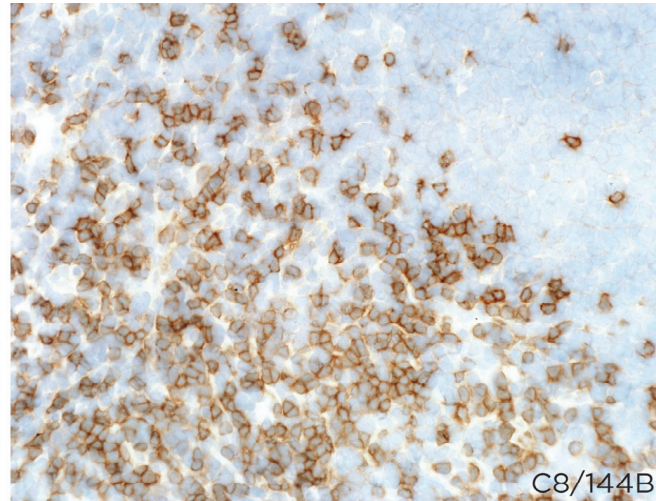
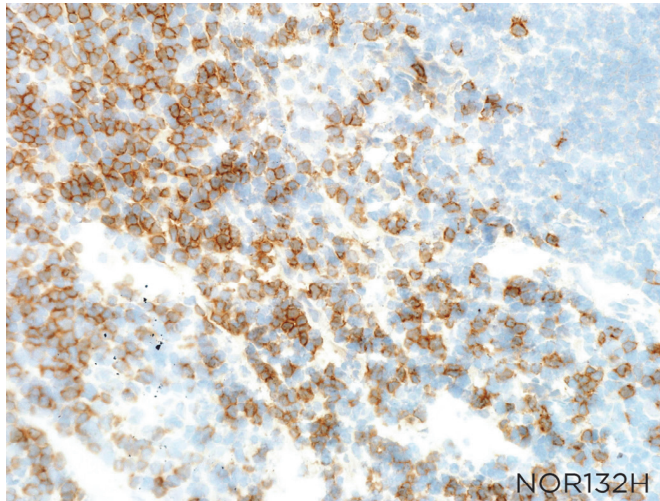
● | IHC-F | **Immunohistochemistry (frozen)**

NOR132H antibody can be used to detect CD8A protein in human frozen tissues.

TISSUE SAMPLE Human Tonsil

DILUTION NOR132H no dilution (neat Supernatant)

CD8 C8/144B no dilution (neat Supernatant)



● | IHC-P | **Immunohistochemistry (paraffin)**

NOR132H antibody can be used to detect CD8A protein in human paraffin tissues.

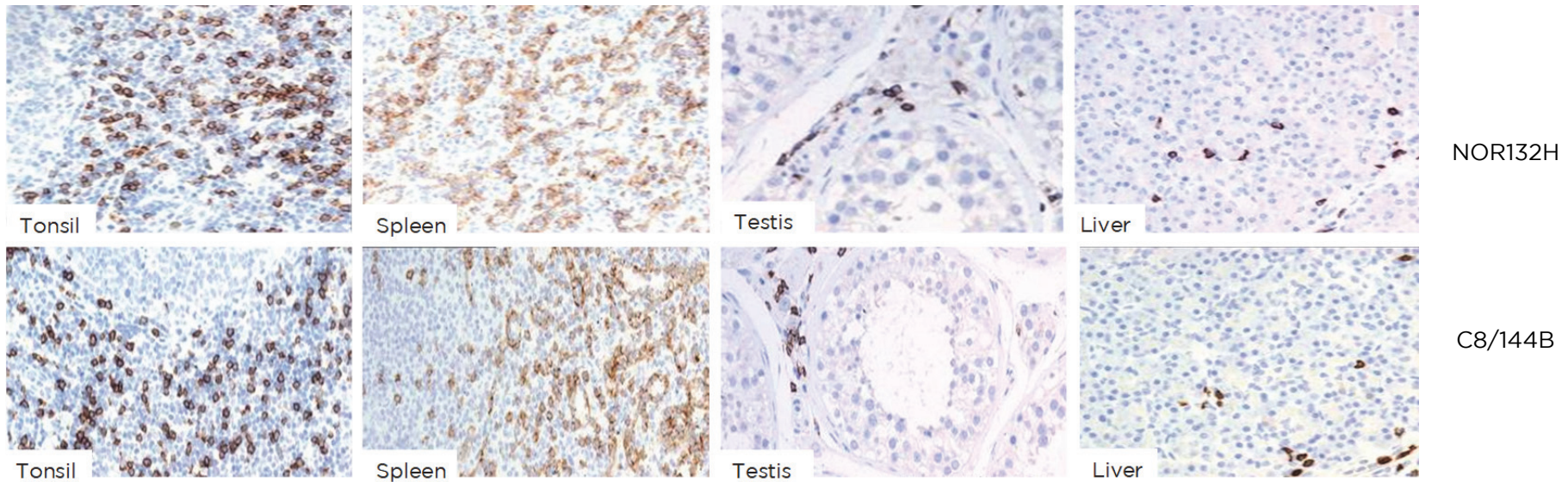
TISSUE SAMPLE Human tonsil, spleen, testis and liver.

DILUTION NOR132H 1:20 (supernatant)

Anti-CD8 C8/144B antibody was diluted 1:25

ANTIGEN RETRIEVAL 30 minutes ER1 (Citrate)

DETECTION SYSTEM Novolink kit (BondMax Leica)



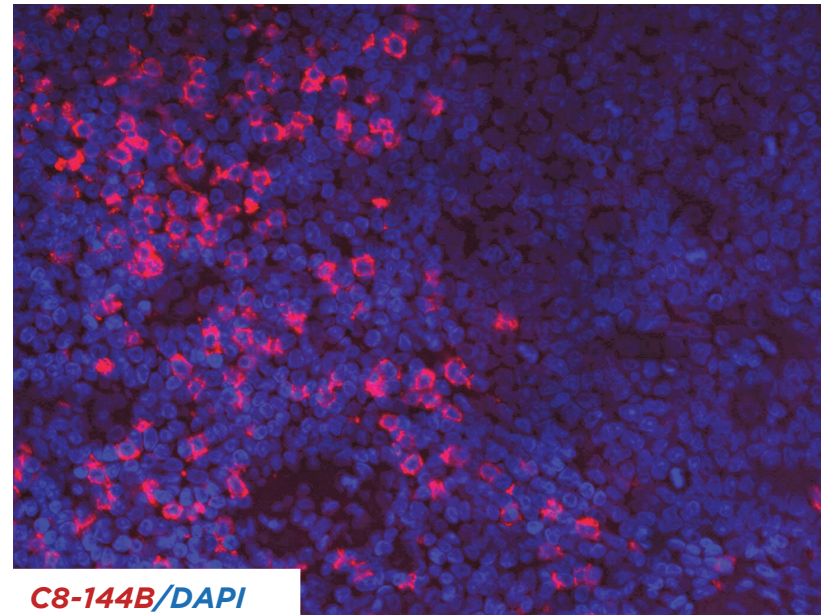
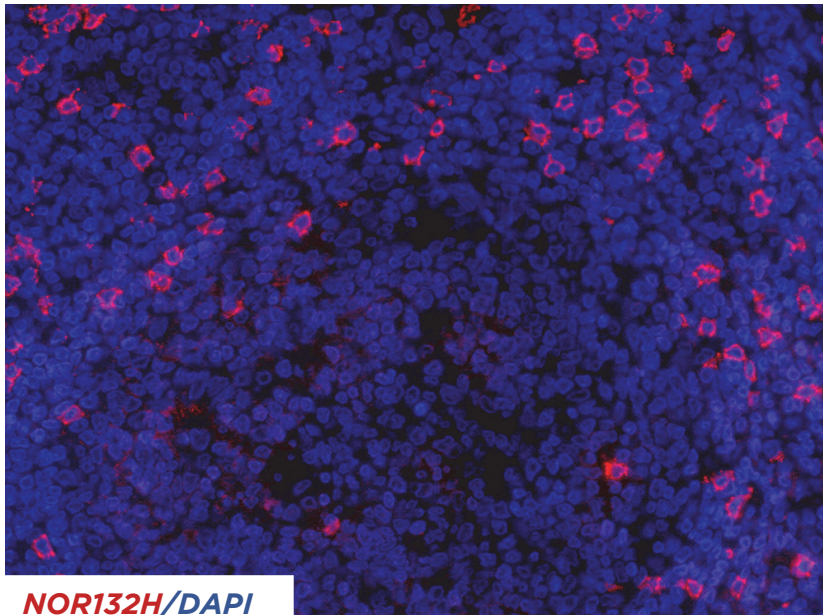
● | IF | **Immunofluorescence (paraffin)**

NOR132H antibody can be used to detect CD8A protein in immunofluorescence.

TISSUE SAMPLE Human tonsil

DILUTION NOR132H 1:20 (supernatant), anti-CD8 C8/144B antibody was diluted 1:25

ANTIGEN RETRIEVAL: Tris-EDTA Buffer



● | FC | **Flow Cytometry**

NOR132H antibody can be used to detect CD8A protein in flow cytometry.

SAMPLES HT and SUPT1 cell lines (2x10⁶ cells/tube)

DILUTION 100ul of supernatant/tube

