

CD43 | *Validation File*

TARGET CD43 (Galactoglycoprotein)

CLONE NAME 93F

DESCRIPTION mouse monoclonal

ANTIGEN USED 697 cell line of human B cell precursor leukaemia

ISOTYPE IgG1

SPECIES REACTIVITY human

LOCALIZATION membrane/cytoplasmic

POSITIVE CONTROL tonsil

STORAGE BUFFER Tissue culture supernatant: 0.02% sodium azide

STORAGE Aliquot and store at 4C. Do not freeze

 Recommended

 Inconclusive

 Not Recommended

 Not Tested

APPLICATIONS

● | WB | **Western Blotting**

93F mAb is able to detect human CD43 protein by WB.

DILUTION 93F 1:2 (supernatant)

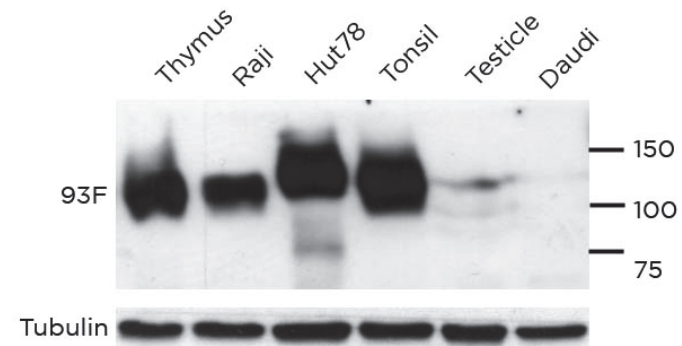
Predicted molecular weight: **115-135kDa**

Observed molecular weight: **115kDa**

LANES

Lane 1	Thymus	(200ug)	(+)
Lane 2	Raji cell line	(200ug)	(+)
Lane 3	Hut 78 cell line	(200ug)	(+)
Lane 4	Tonsil	(200ug)	(+)
Lane 5	Testicle	(200ug)	(-)
Lane 6	Daudi cell line	(200ug)	(-)

Tubulin was used as loading control

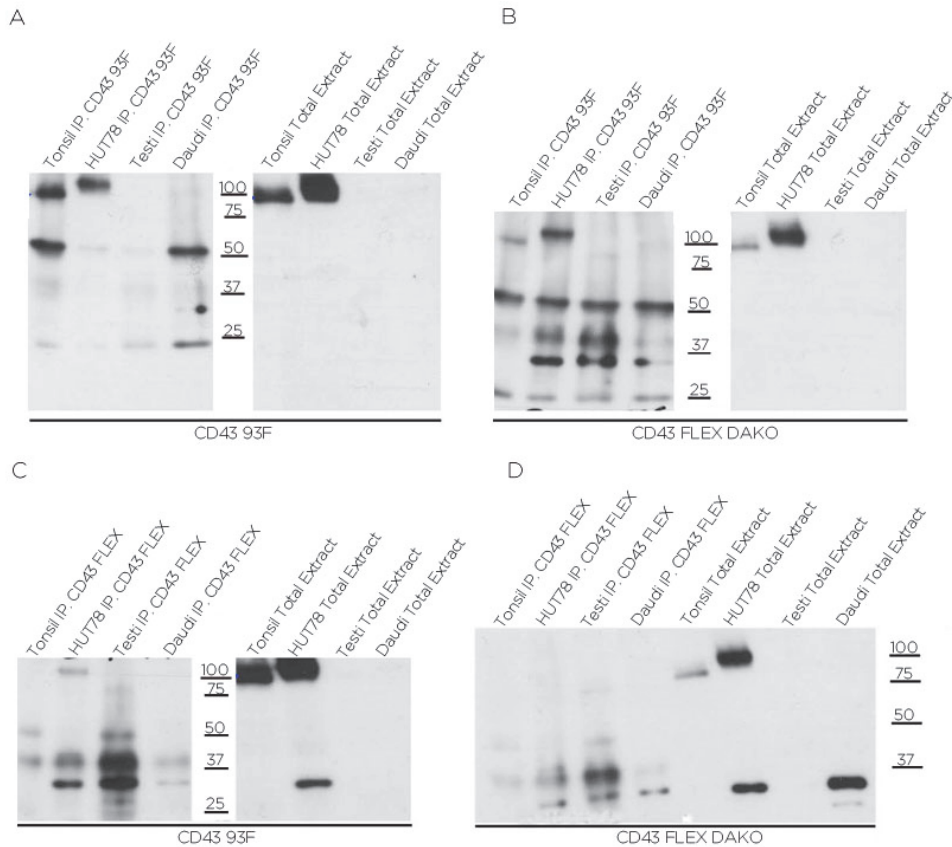


● | IP | **Immunoprecipitation**

Antibody 93F can be used to immunoprecipitate CD43 protein

DILUTION 93F 1:2 (supernatant)

DF-T1 antibody was diluted 1:2



A. Immunoprecipitation of protein extracts from human tonsil, Hut78 cell line, human testicle and Daudi cell line with 93F (40ul/lane as supernatant) followed by western blotting with the same antibody.

B. Immunoprecipitation of protein extracts from human tonsil, Hut78 cell line, human testicle and Daudi cell line with 93F (40ul/lane used as supernatant) followed by western blotting with Dako anti-CD43 antibody.

C. Immunoprecipitation of protein extracts from human tonsil, Hut78 cell line, human testicle and Daudi cell line with Dako antibody (4ul/lane) followed by western blotting with 93F antibody.

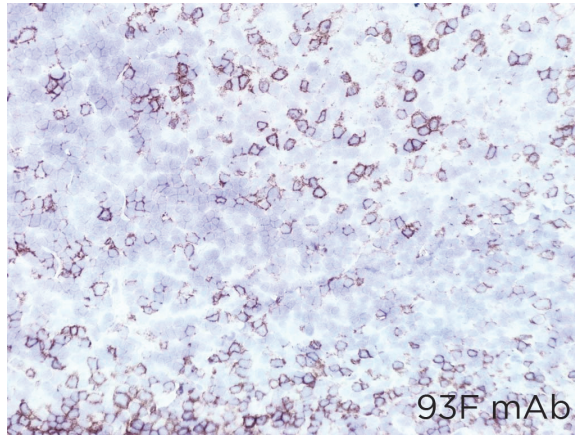
D. Immunoprecipitation of protein extracts from human tonsil, Hut78 cell line, human testicle and Daudi cell line with Dako antibody (4ul/lane) followed by western blotting with the same antibody.

● | IHC-F | **Immunohistochemistry (frozen)**

93F antibody can be used to detect CD43 protein in human frozen tissues.

TISSUE SAMPLE Human Tonsil

DILUTION No dilution (Neat Supernatant)



● | IHC-P | **Immunohistochemistry (paraffin)**

93F antibody can be used to detect CD43 protein in human paraffin tissues.

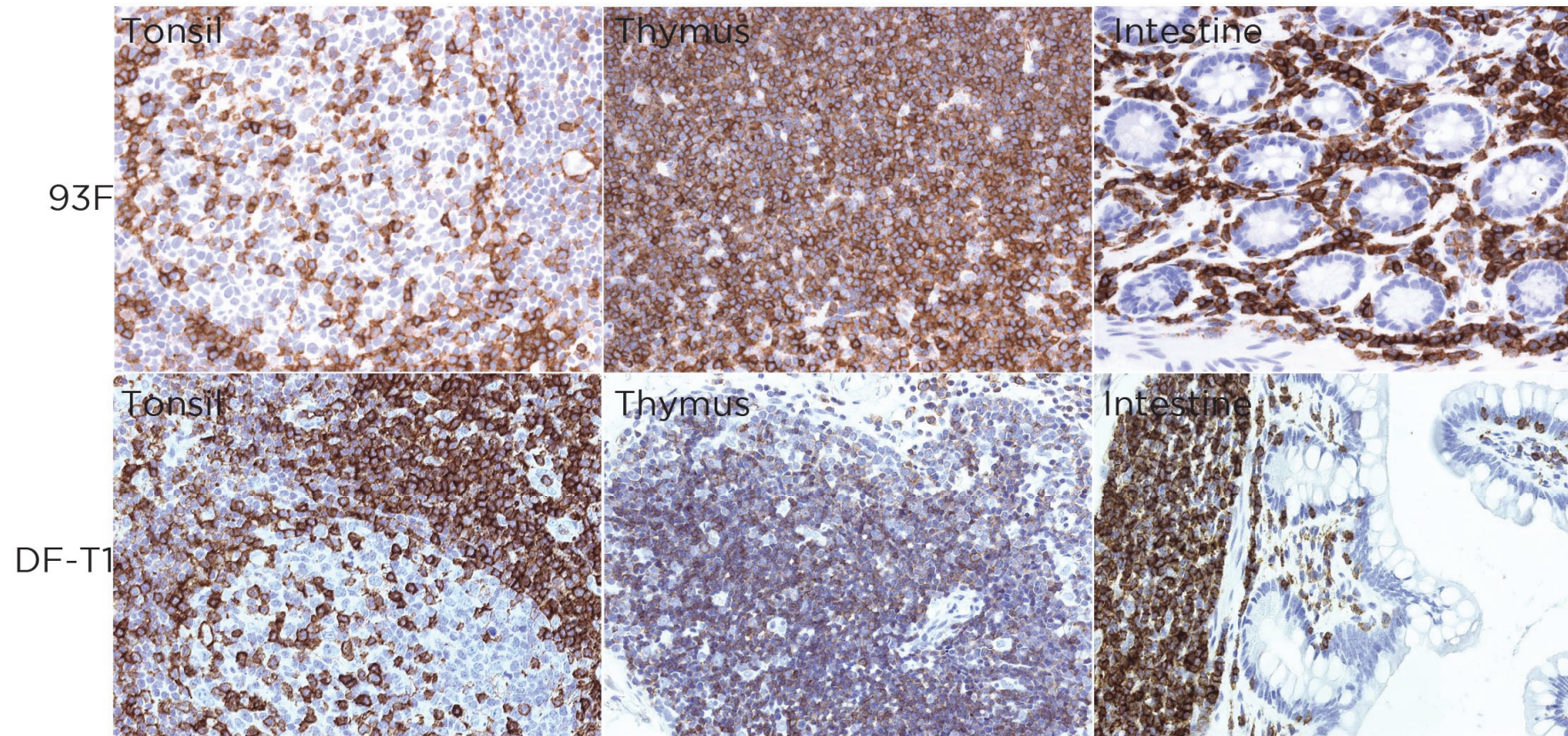
TISSUE SAMPLE Human tonsil, thymus and intestine.

DILUTION 93F 1:400 (supernatant)

DF-T1 DAKO no dilution

ANTIGEN RETRIEVAL: 20 minutes ER2 (Tris-EDTA)

DETECTION SYSTEM: Novolink kit (BondMax Leica)



● | IF | **Immunofluorescence (paraffin)**

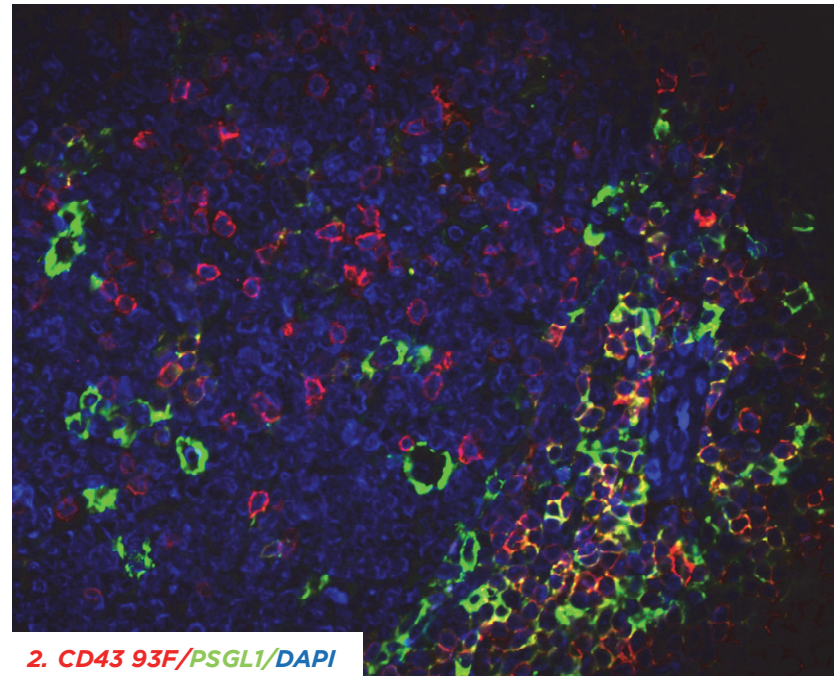
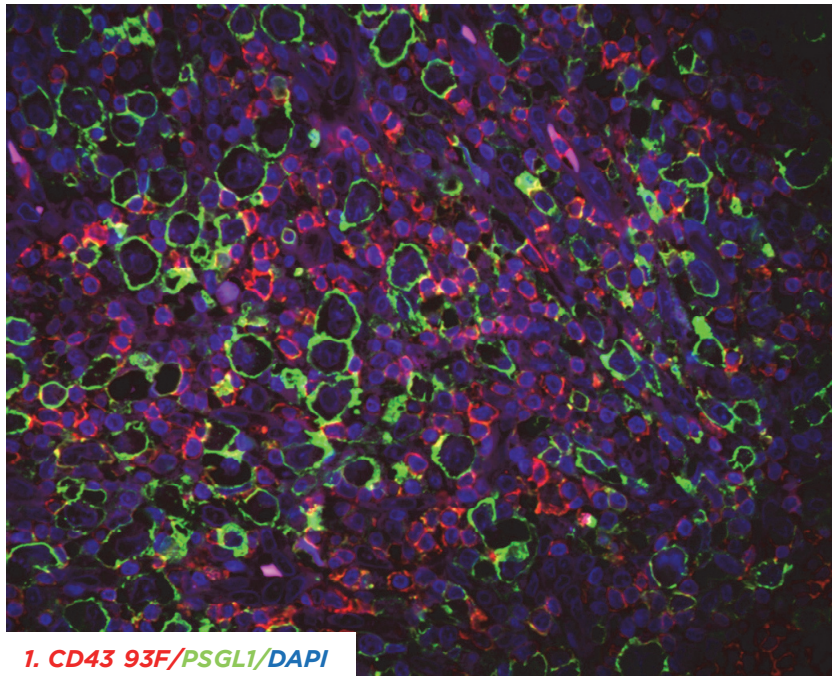
93F antibody can be used to detect CD43 protein in immunofluorescence

TISSUE SAMPLE 1. Hodgkin's Lymphoma **2.** Human Tonsil.

DILUTION 93F 1:50 (supernatant)

PSGL1 (neat supernatant)

ANTIGEN RETRIEVAL 20 minutes (Tris-EDTA)



● | FC | **Flow Cytometry** Not done