

CD38 | Validation File

TARGET CD38

CLONE NAME MIX187A

DESCRIPTION mouse monoclonal

ANTIGEN USED LP1 cell line

ISOTYPE IgG1

SPECIES REACTIVITY human

LOCALIZATION membrane

POSITIVE CONTROL tonsil

STORAGE BUFFER Tissue culture supernatant: 0.02% sodium azide

STORAGE Aliquot and store at 4C. Do not freeze



Recommended



Inconclusive



Not Recommended



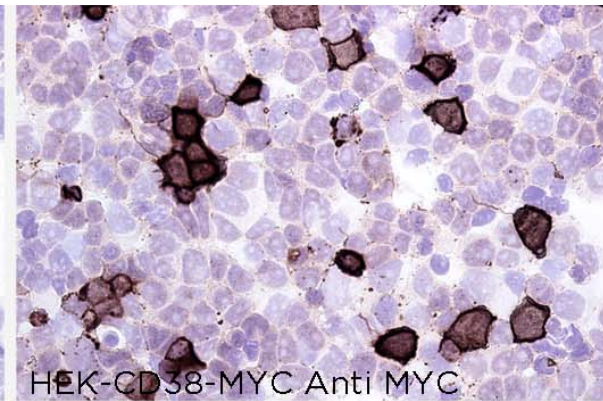
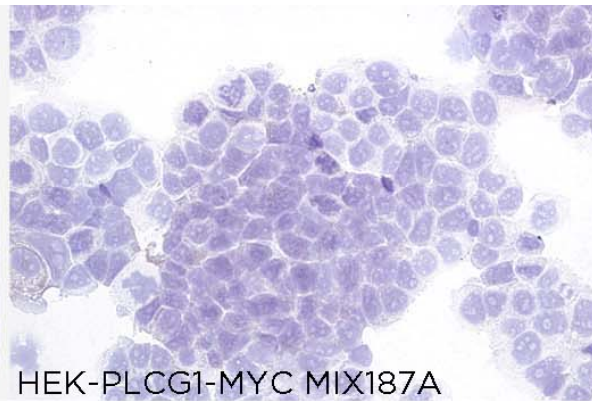
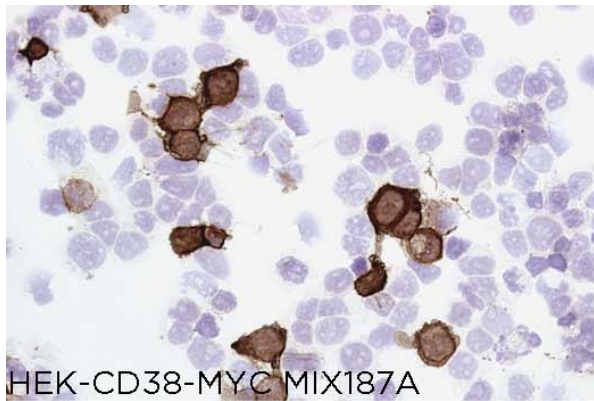
Not Tested

APPLICATIONS

● | ICC | Immunocytochemistry

MIX187A mAb is able to detect human CD38 protein in immunocytochemistry.

To confirm that MIX187A mAb recognizes human CD38 protein, immunocytochemistry on frozen cytospin preparations of myc-tagged CD38 expressed in HEK293 was performed. Cytospin preparation of PLCG1-myc transfected cells was used as negative control. Anti-MYC antibody was used as positive control.

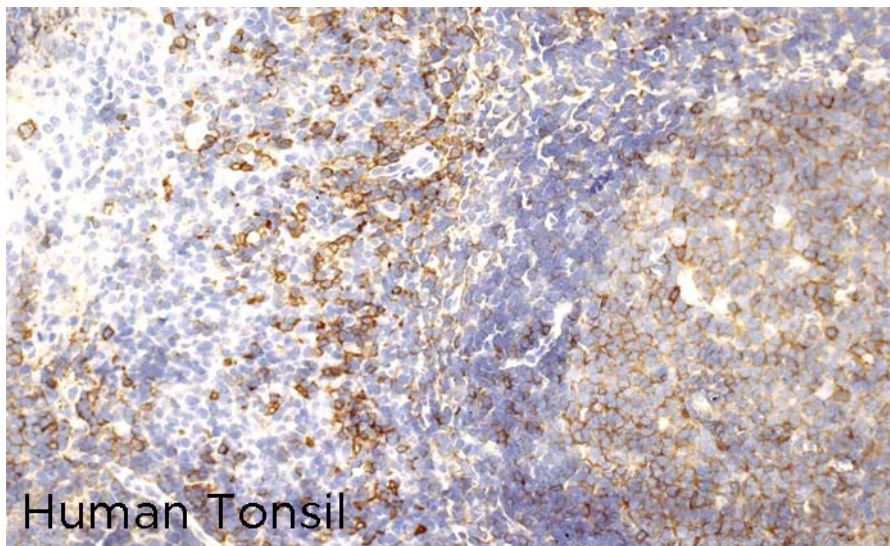


● | IHC-F | **Immunohistochemistry (frozen)**

MIX187A antibody can be used to detect CD38 protein in human frozen tissues.

TISSUE SAMPLE Human Tonsil

DILUTION No dilution (neat Supernatant)



● | IHC-P | Immunohistochemistry (paraffin)

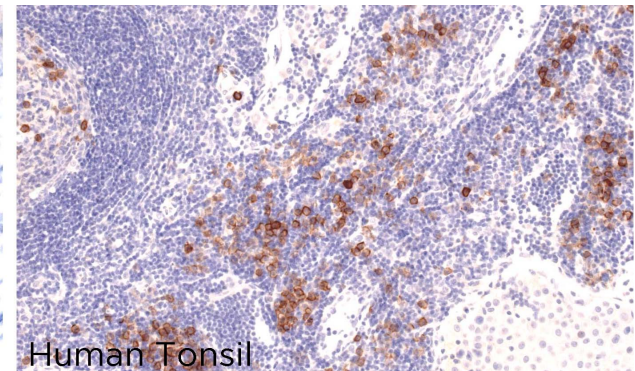
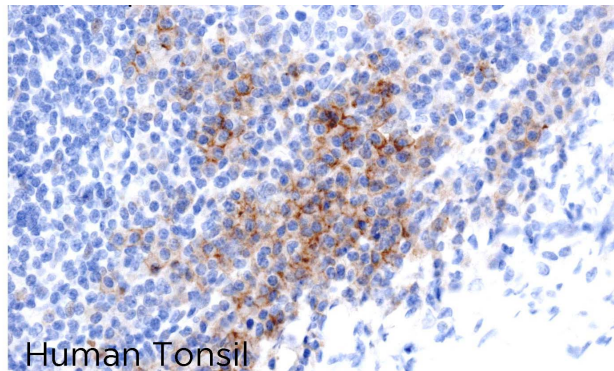
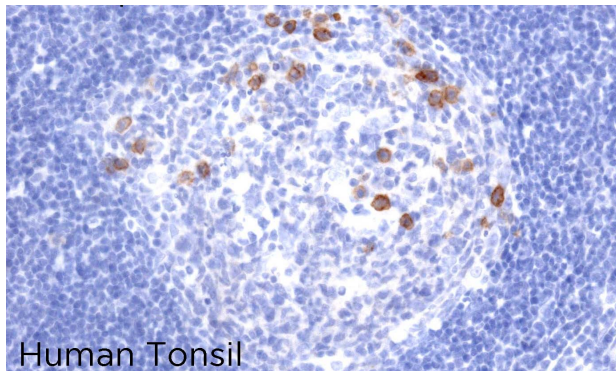
MIX187A antibody can be used to detect CD38 protein in human paraffin tissues.

TISSUE SAMPLE Human tonsil.

DILUTION no dilution (neat supernatant)

ANTIGEN RETRIEVAL 30 minutes ER1 (Citrate Buffer)

DETECTION SYSTEM Novolink kit (BondMax Leica)



● | FC | **Flow Cytometry**

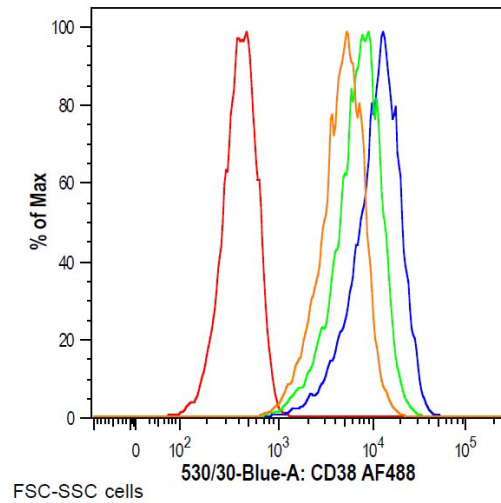
MIX187A antibody can be used to detect CD38 in flow cytometry.

TISSUE SAMPLE LP1 myeloma cell line (positive) and KH-M2 Hodgkin lymphoma cell line (negative).

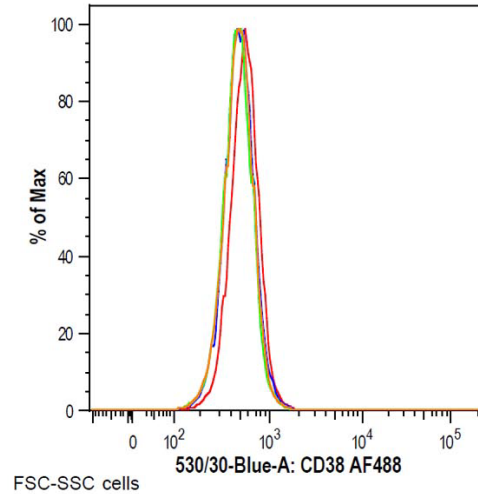
DILUTION 1:50, 1:100, 1:200 (supernatant)

QUANTITY 100000 cells/tube

ANTIBODY INCUBATION 30 min



	Sample	%
■	080915_LP1 1,2f,200.fcs	96.5
■	080915_LP1 1,2f,100.fcs	95.8
■	080915_LP1 1,2f,50.fcs	96.6
■	080915_LP1 negative control.fcs	96.2



	Sample	%
■	080915_KHM2 1,2f,200.fcs	89.9
■	080915_KHM2 1,2f,100.fcs	92.4
■	080915_KHM2 1,2f,50.fcs	94.3
■	080915_KHM2 negative control.fcs	95

● | IP | **Immunoprecipitation** Not done

● | IF | **Immunofluorescence (paraffin)** Not done

● | WB | **Western Blotting** Not recommended