

CD30 | *Validation File*

TARGET CD30

CLONE NAME CON6D

DESCRIPTION mouse monoclonal

ANTIGEN USED L428 Hodgkin's lymphoma cell line

ISOTYPE IgG2a

SPECIES REACTIVITY human

LOCALIZATION membrane

POSITIVE CONTROL Hodgkin's lymphoma case


STORAGE BUFFER Tissue culture supernatant: 0.02% sodium azide

STORAGE Aliquot and store at 4C. Do not freeze

 Recommended

 Inconclusive

 Not Recommended

 Not Tested

APPLICATIONS

● | WB | **Western Blotting**

CON6D mAb is able to detect human CD30 protein by WB.

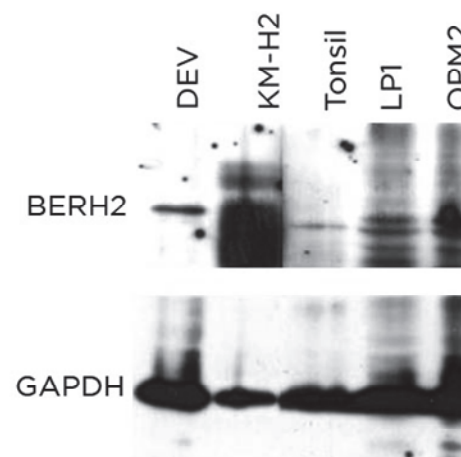
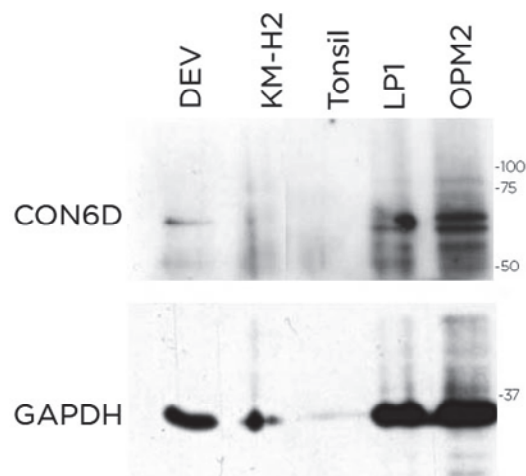
DILUTION CON6D no dilution (neat supernatant)

Ber-H2 (DAKO prediluted format)

Predicted molecular weight: **62kDa**
Observed molecular weight: **62kDa**

LANES

Lane 1	DEV cell line	(100ug)	(+)
Lane 2	KM-H2 cell line	(100ug)	(-)
Lane 3	Human Tonsil	(100ug)	(-)
Lane 4	LP1 cell line	(100ug)	(+)
Lane 5	OPM2 cell line	(100ug)	(+)

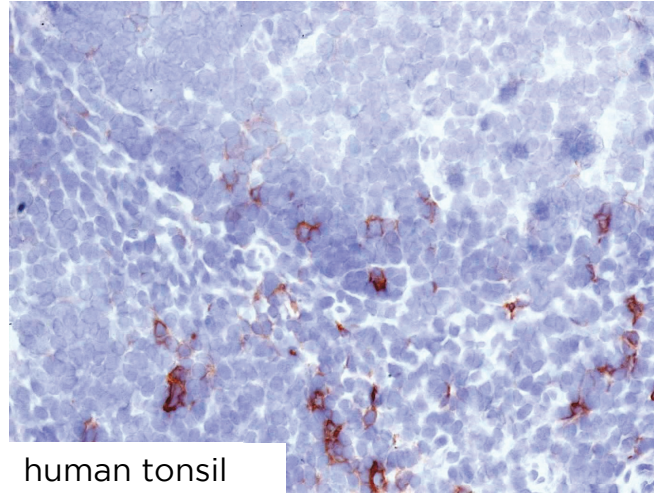
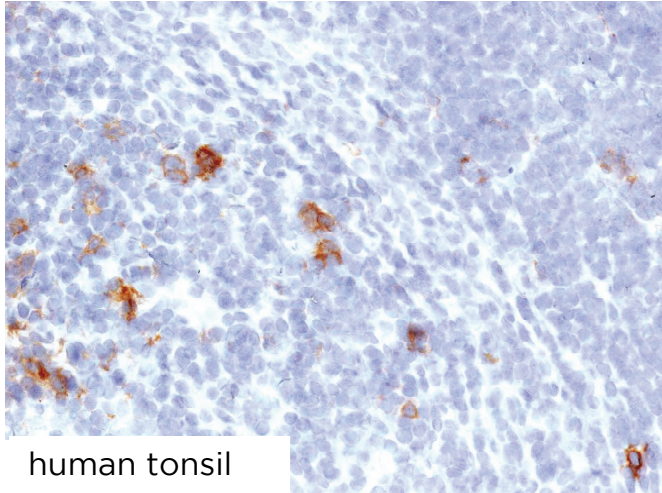


● | IHC-F | **Immunohistochemistry (frozen)**

Antibody CON6D can be used to detect CD30 protein in human frozen tissues.

TISSUE SAMPLE Human Tonsil

DILUTION 1:100 purified antibody (1mg/ml)



● | IHC-P | **Immunohistochemistry (paraffin)**

Antibody CON6D can be used to detect CD30 protein in human paraffin tissues.

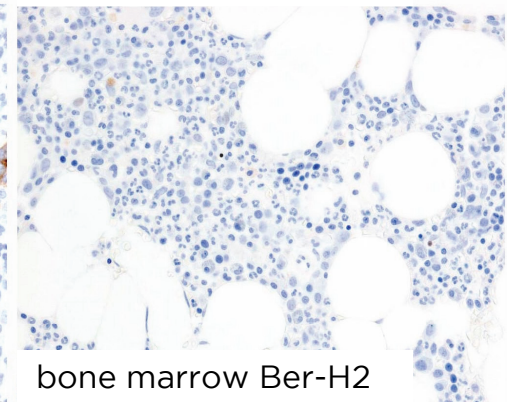
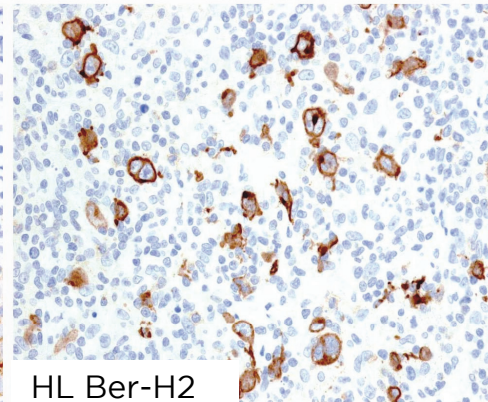
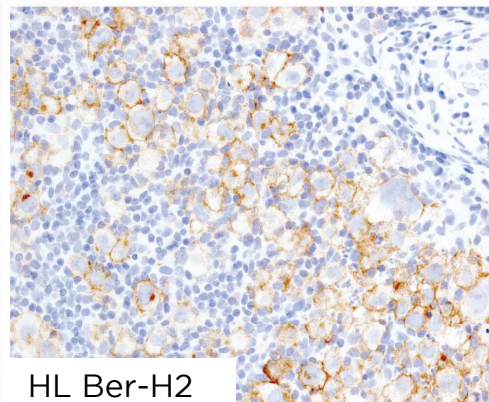
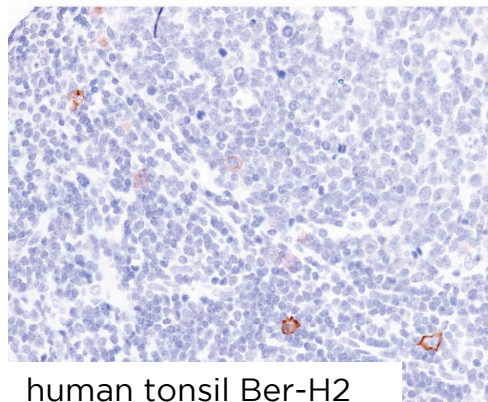
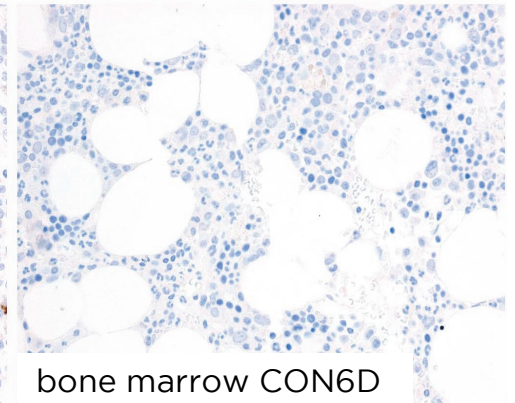
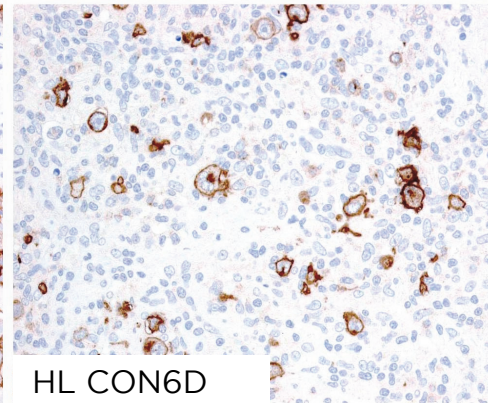
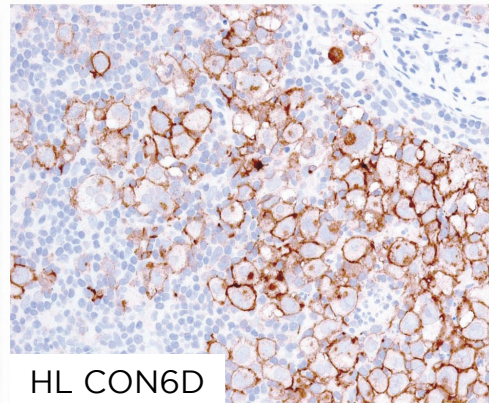
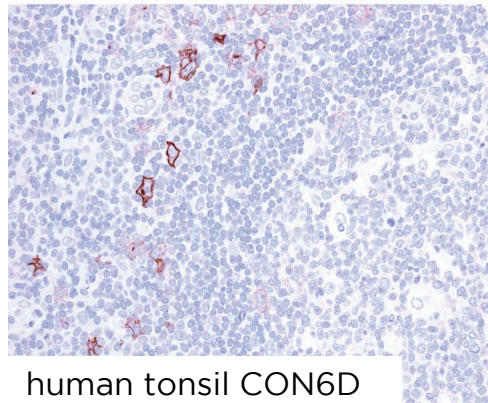
TISSUE SAMPLE Human tonsil, two Hodgkin Lymphoma and bone marrow.

DILUTION CON6D no dilution (neat supernatant) 1:100 purified antibody (1mg/ml)

Ber-H2 antibody was used 1:100 purified antibody (1mg/ml)

ANTIGEN RETRIEVAL 30 minutes ER1 (Citrate Buffer)

DETECTION SYSTEM Novolink kit (BondMax Leica)



● | IF | **Immunofluorescence (paraffin)**

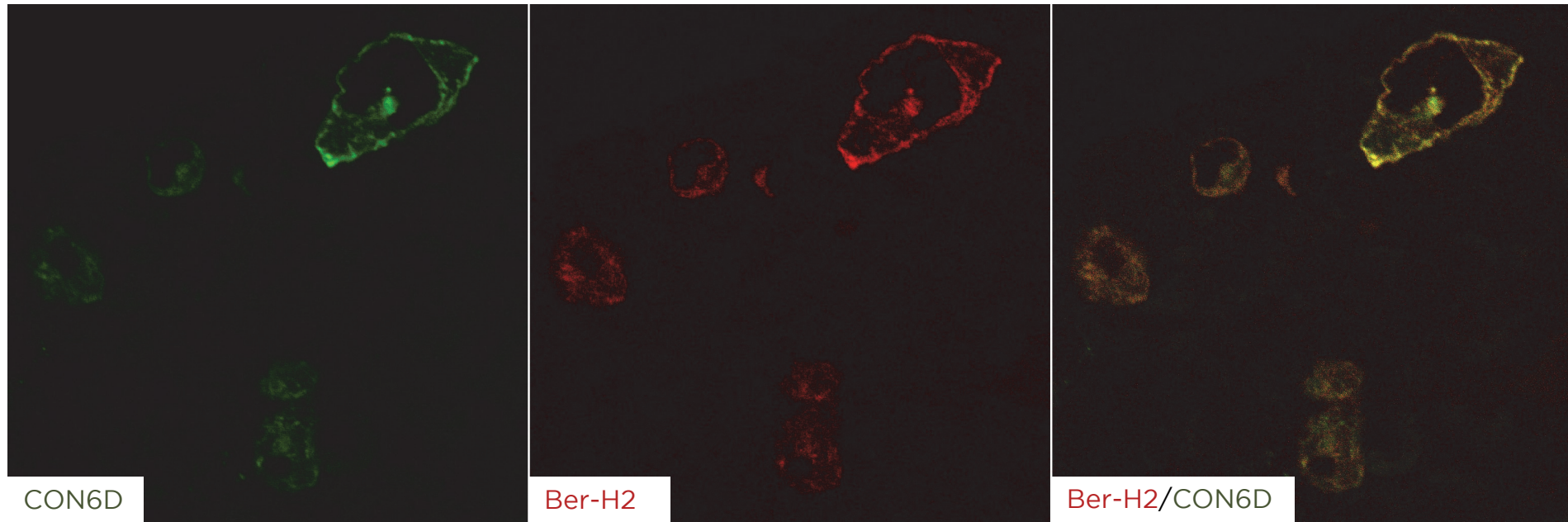
Antibody CON6D can be used to detect CD30 in immunofluorescence.

TISSUE SAMPLE Hodgkin's Lymphoma

DILUTION CON6D no dilution (neat supernatant)

Ber-H2 antibody was used 1:50 purified antibody (1mg/ml)

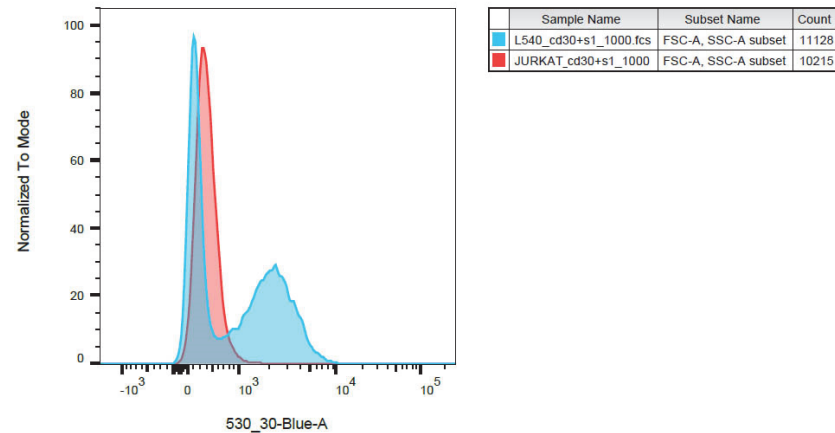
ANTIGEN RETRIEVAL 30 minutes ER1 (Citrate Buffer)



● | FC | **Flow Cytometry**

Antibody CON6D can be used to detect CD30 in flow cytometry.

SAMPLES Jurkat and L540 cell lines
ANTIBODY DILUTION 1:2 (supernatant)



● | IP | **Immunoprecipitation** Not tested

SOLD BY: Abcam, Biocare and Santa Cruz

REFERENCES

Lu TX, Liang JH, Miao Y, Fan L, Wang L, Qu XY, Cao L, Gong QX, Wang Z, Zhang ZH, Xu W, Li JY. Epstein-Barr virus positive diffuse large B-cell lymphoma predict poor outcome, regardless of the age. *Sci Rep.* 2015 Jul 23;5:12168.

Lau SK1, Thomas P, Weiss LM. Immunohistochemical evaluation of CON6D/B5: a new CD30 monoclonal antibody. *Appl Immunohistochem Mol Morphol.* 2010 May;18(3):273-7.

Nam-Cha SH, Montes-Moreno S, Salcedo MT, Sanjuan J, Garcia JF and Piris MA. Lymphocyte-rich classical Hodgkin's lymphoma: distinctive tumor and microenvironment markers. *Modern Pathology*. 2009 22, 1006-1015.

Göran Mattsson, Soo Yong Tan, David J P Ferguson, Wendy Erber, Susan H Turner, Teresa Marafioti, David Y Mason. Detection of genetic alterations by immunoFISH analysis of whole cells extracted from routine biopsy material. *The Journal of Molecular Diagnostics: JMD*. 1 September 2007.

Garcia JF, Roncador G, Garcia JF, Sanz AI, Maestre L, Lucas E, Montes-Moreno S, Fernandez Victoria R, Martinez-Torrecedrara JL, Marafioti T, Mason DY, Piris MA. PRDM1/BLIMP-1 expression in multiple B and T-cell lymphoma. *Haematologica*. 2006. Apr; 91:467-74.