

NGFR | *Validation File*

TARGET NGFR Tumor necrosis factor receptor superfamily member 16

CLONE NAME NORI138B

DESCRIPTION rat monoclonal

ANTIGEN USED His-mNGFR (276-427aa) protein

ISOTYPE IgG2a

SPECIES REACTIVITY human and mouse

LOCALIZATION transmembrane

POSITIVE CONTROL Human Tonsil

STORAGE BUFFER Tissue culture supernatant: 0.02% sodium azide

Purified antibody: PBS plus 1%BSA and 0.02% sodium azide. MAb concentration: 1mg/ml

STORAGE Aliquot and store at 4C. Do not freeze



Recommended



Inconclusive



Not Recommended



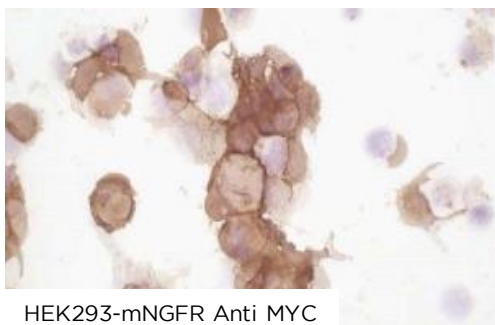
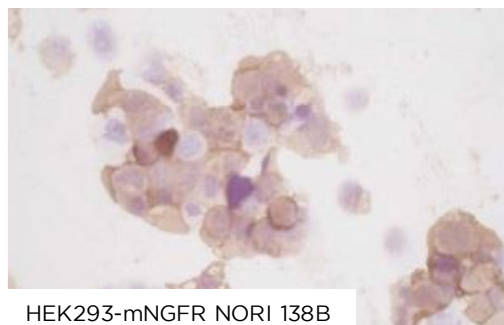
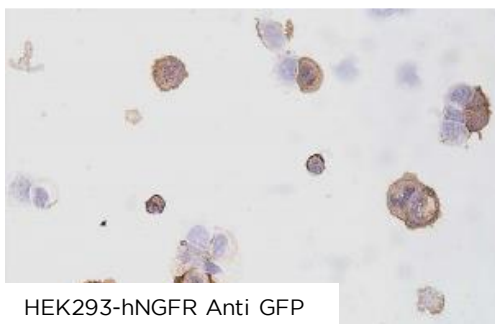
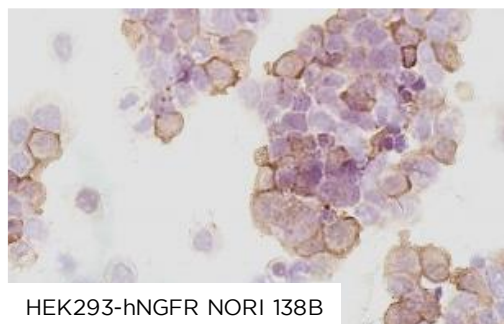
Not Tested

APPLICATIONS

● | ICC | *Immunocytochemistry*

NORI138B mAb is able to detect human and mouse NGFR protein in immunocytochemistry.

To confirm if NORI138B is specific for human and mouse NGFR protein, immunocytochemistry was performed on frozen cytospin preparations of HEK293 cells transfected with pcmv6-mNGFR-MYC-DDK and pLenti-hNGFR-mGFP. Labeling with the anti-MYC and GFP mAbs confirmed the efficiency of transfection.



● | WB | **Western Blotting**

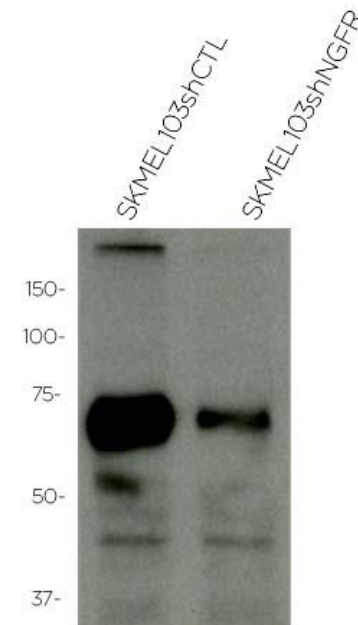
NORI138B mAb is able to detect human NGFR protein by WB.

DILUTION no dilution (neat supernatant)
1:1000 purified antibody (1mg/ml)

Predicted molecular weight: **45kDa**
Observed molecular weight: **60kDa**

LANES

Lane 1 Melanoma cell line SKMEL103 shCONTROL (30ug) (+)
Lane 2 Melanoma cell line SKMEL103 shRNA NGFR (30ug) (+)



● | IP | **Immunoprecipitation**

NORI138B mAb is able to immunoprecipitate endogenous human NGFR protein from cells

DILUTION 2ug/mg of total protein; from purified antibody and 1:1000 (WB)

Predicted molecular weight: **45kDa**

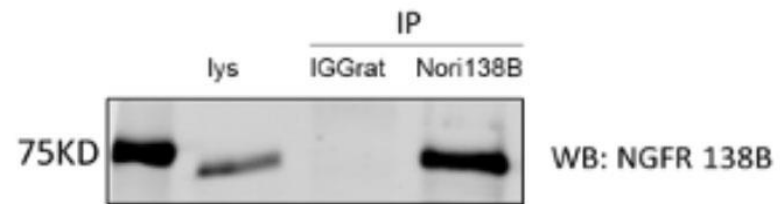
Observed molecular weight: **75kDa**

LANES

Lane 1 Lysates from SK-MEL 103 (10ug)

Lane 2 Melanoma cell line SKMEL103 IP anti-IGG

Lane 2 Melanoma cell line SKMEL103 IP NGFR



● | IHC-P | ***Immunohistochemistry (paraffin)***

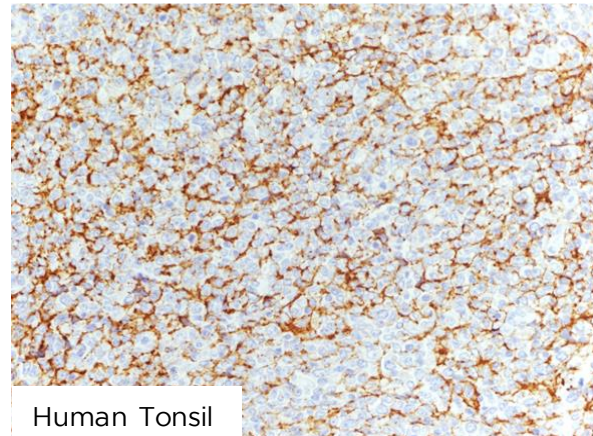
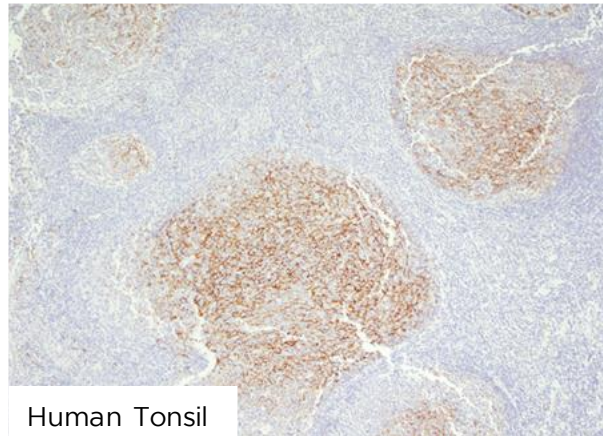
NOR138B antibody can be used to detect NGFR protein in human paraffin tissues.

TISSUE SAMPLE Human tonsil

DILUTION 1:100 (supernatant)

ANTIGEN RETRIEVAL 30 minutes ER1 (Citrate Buffer)

DETECTION SYSTEM Novolink kit (BondMax Leica)



● | IF | **Immunofluorescence (paraffin)**

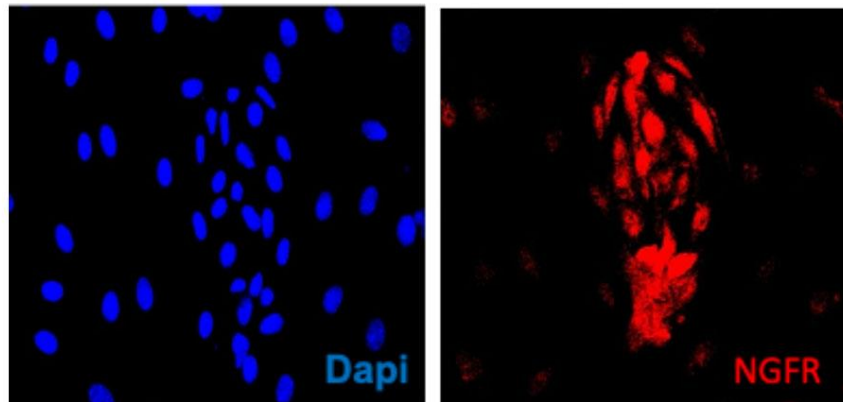
NORI138B mAb is able to detect human NGFR protein in Immunofluorescence.

CELL LINE: Human lymphatic endothelial cells

DILUTION 1:100 (Purified ab; 1mg/ml)

SECONDARY ANTIBODY: Alexa 555 anti-rat antibody (1:500)

hLECs



● | FC | **Flow Cytometry** Not suitable

● | IHC-F | **Immunohistochemistry (frozen)** Not done