

## **TACI/TNFRSF13B | Validation File**

**TARGET** TACI/TNFRSF13B (Tumor necrosis factor receptor superfamily member 13B)

**CLONE NAME** CLOE240B

**DESCRIPTION** Rat monoclonal

**ANTIGEN USED** human GST-TACI-intracellular (187-293) fragment

**ISOTYPE** IgG2a

**SPECIES REACTIVITY** human

**LOCALIZATION** membrane

**POSITIVE CONTROL** tonsil

**STORAGE BUFFER** Tissue culture supernatant: 0.02% sodium azide

Purified antibody: PBS plus 1%BSA and 0.02% sodium azide. MAb concentration: 1mg/ml

**STORAGE** Aliquot and store at 4C. Do not freeze



Recommended



Inconclusive



Not Recommended



Not Tested

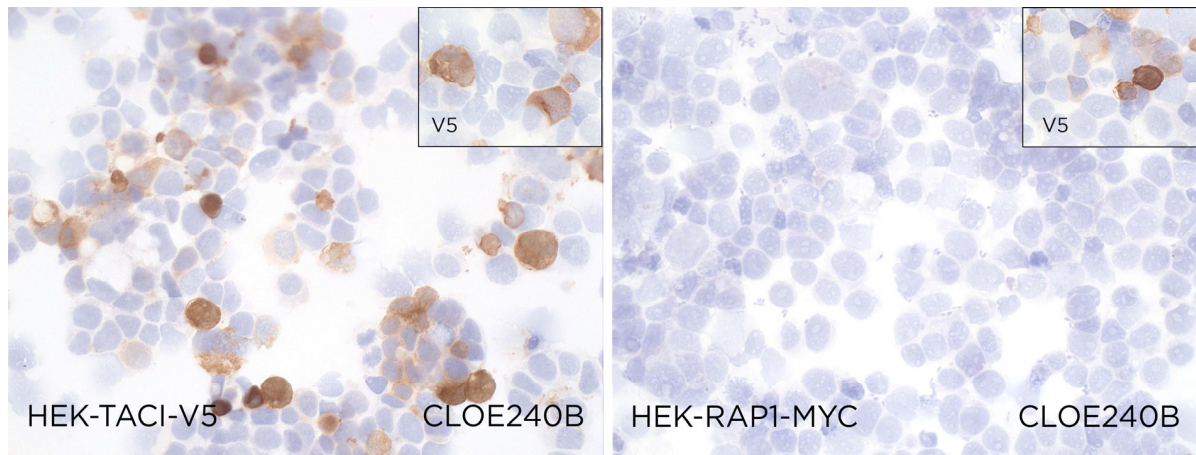
# APPLICATIONS

## ● | ICC | *Immunocytochemistry*

CLOE240B is able to detect human TACI protein in immunocytochemistry

DILUTION Neat supernatant

To confirm that CLOE240B mAb recognizes human TACI protein, immunocytochemistry on frozen cytospin preparations of TACI expressed in HEK293T cell line was performed. HEK-RAP1-MYC transfected cells was used as negative control. Anti-V5 antibody was used as positive control.



● | WB | **Western Blotting**

CLOE240B mAb is able to detect human TACI protein by WB.

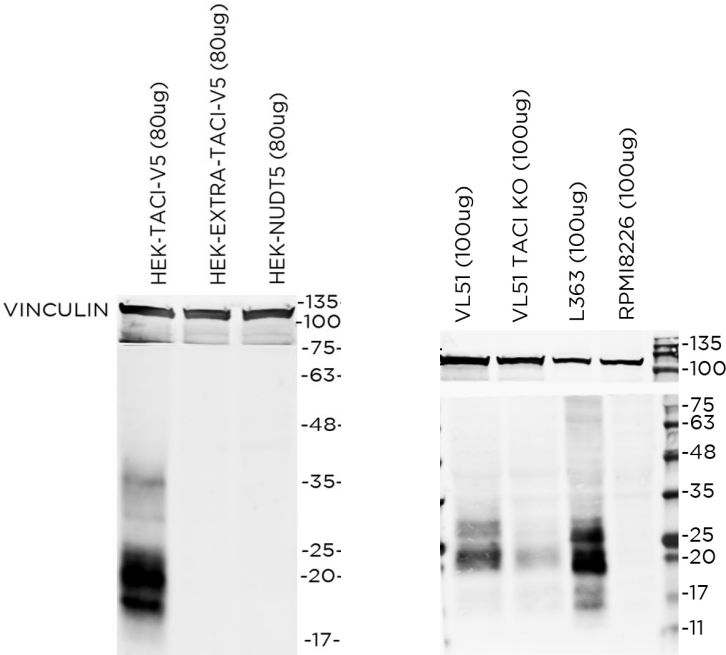
DILUTION   neat supernatant

Predicted molecular weight: **32kDa**  
Observed molecular weight: **32kDa**

**LANES**

Lane 1	HEK-TACI-V5	(80ug) (+)
Lane 2	HEK-TACI extracellular portion	(80ug) (-)
Lane 3	HEK-NUDT5	(80ug) (-)
Lane 4	VL51 cell line	(100ug) (+)
Lane 5	VL51 TACI KO cell line	(100ug) (-)
Lane 6	L363 cell line	(100ug) (+)
Lane 7	RPMI8226 cell line	(100ug) (-)

Vinculin was used as loading control



● | IHC-P | ***Immunohistochemistry (paraffin)***

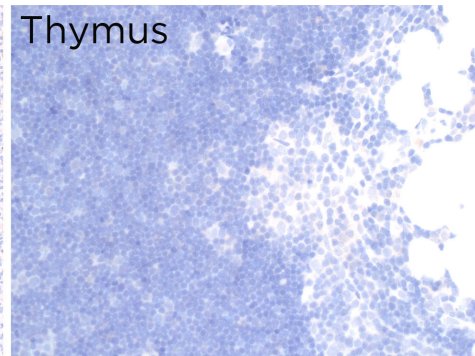
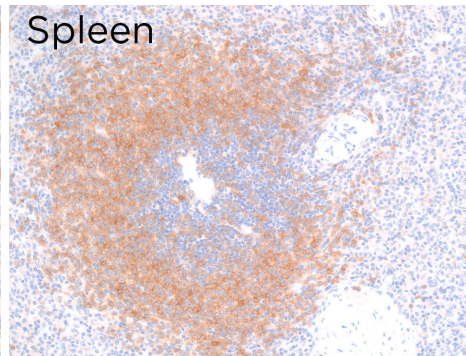
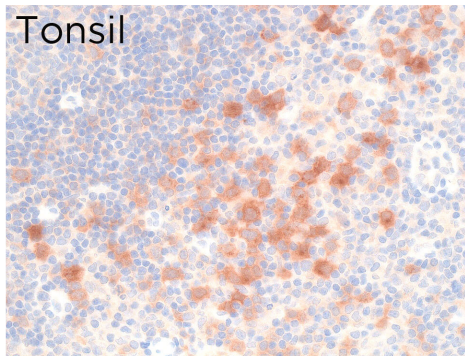
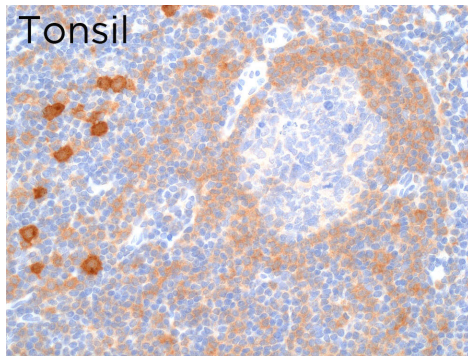
CLOE240B mAb can be used to detect TACI protein in human paraffin tissues

TISSUE SAMPLE Tonsil, spleen and thymus

DILUTION neat supernatant

ANT. RETRIEVAL 30 minutes ER2 (Tris-EDTA)

DETECTION SYSTEM Novolink kit (BondMax Leica)



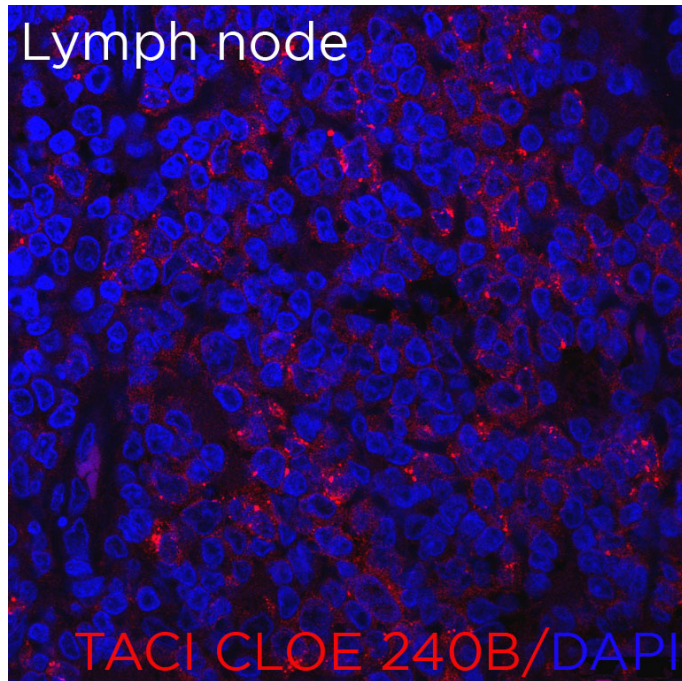
● | IF | **Immunofluorescence (paraffin)**

CLOE240B mAb can be used to detect TACI protein by immunofluorescence

**TISSUE SAMPLE** Lymph node (dendritic cells)

**DILUTION** Neat supernatant

**ANT. RETRIEVAL** 20 minutes ER2 (Tris-EDTA



● | IHC-F | **Immunohistochemistry (frozen)** Not Tested

● | FC | **Flow Cytometry** Not Tested

● | IP | **Immunoprecipitation** Not Tested