

## CD15 | Validation File

**TARGET** CD15 (alpha-(1,3)-fucosyltransferase)

**CLONE NAME** 153B

**DESCRIPTION** mouse monoclonal

**ANTIGEN USED** Human B cell precursor leukaemia cell line (697)

**ISOTYPE** IgM

**SPECIES REACTIVITY** human

**LOCALIZATION** cytoplasmic

**POSITIVE CONTROL** Tonsil

**STORAGE BUFFER** Tissue culture supernatant: 0.02% sodium azide

**STORAGE** Aliquot and store at 4C. Do not freeze



Recommended



Inconclusive



Not Recommended



Not Tested

# APPLICATIONS

## ● | IHC-P | **Immunohistochemistry (paraffin)**

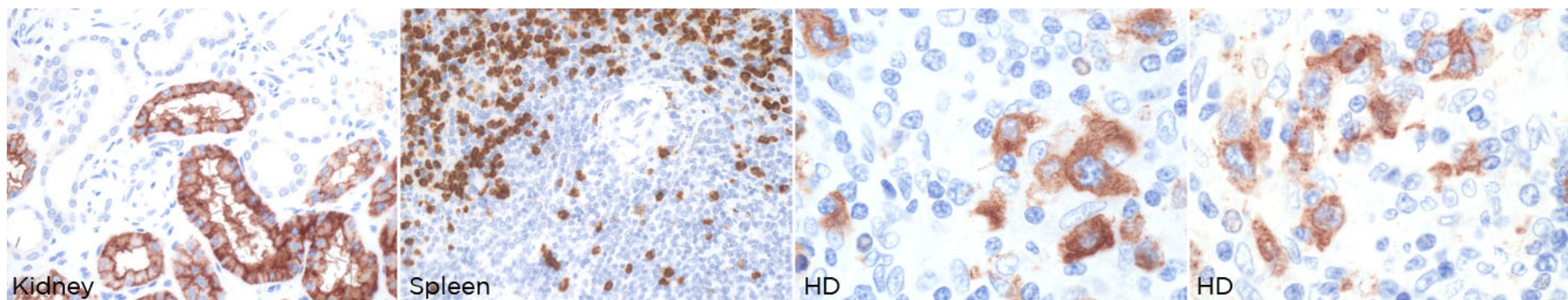
153B mAb can be used to detect CD15 protein in human paraffin tissues

**TISSUE SAMPLE** Human kidney, spleen and Hodgkin's Disease

**DILUTION** No dilution (neat supernatant)

**ANT. RETRIEVAL** 30 minutes ER1 (Citrate Buffer)

**DETECTION SYSTEM** Novolink kit (BondMax Leica)



● | IF | **Immunofluorescence (paraffin)** Not tested

● | FC | **Flow Cytometry** Not tested

● | IP | **Immunoprecipitation** Not tested

● | IHC-F | **Immunohistochemistry (frozen)** Not recommended

● | WB | **Western Blotting** Not tested

● | ICC | **Immunocytochemistry** Not tested

## REFERENCES

Nam-Cha SH, Montes-Moreno S, Salcedo MT, Sanjuan J, Garcia JF and Piris MA. Lymphocyte-rich classical Hodgkin's lymphoma: distinctive tumor and microenvironment markers. Modern Pathology (2009) 22, 1006-1015.