

CD15 | Validation File

TARGET CD15 (alpha-(1,3)-fucosyltransferase)

CLONE NAME 153B

DESCRIPTION mouse monoclonal

ANTIGEN USED Human B cell precursor leukaemia cell line (697)

ISOTYPE IgM

SPECIES REACTIVITY human

LOCALIZATION cytoplasmic

POSITIVE CONTROL Tonsil

STORAGE BUFFER Tissue culture supernatant: 0.02% sodium azide

STORAGE Aliquot and store at 4C. Do not freeze

 Recommended

 Inconclusive

 Not Recommended

 Not Tested

APPLICATIONS

● | IHC-P | **Immunohistochemistry (paraffin)**

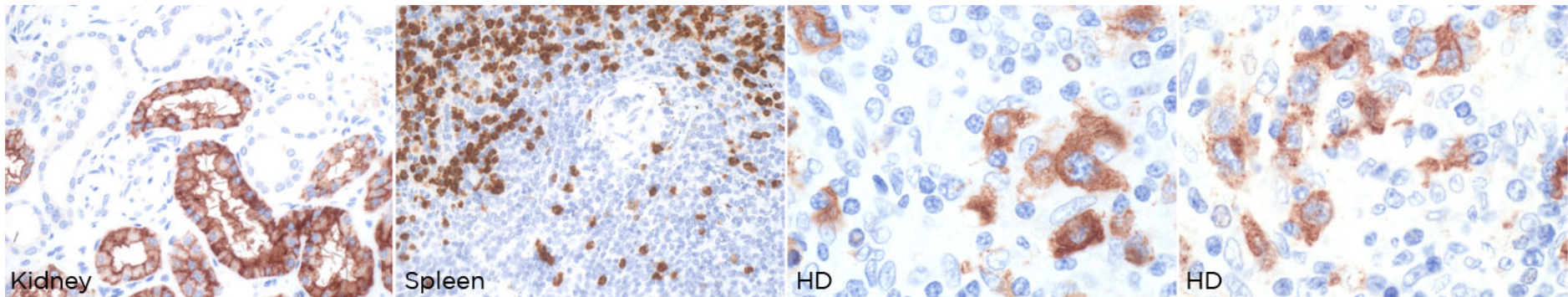
153B mAb can be used to detect CD15 protein in human paraffin tissues

TISSUE SAMPLE Human kidney, spleen and Hodgkin's Disease

DILUTION No dilution (neat supernatant)

ANT. RETRIEVAL 30 minutes ER1 (Citrate Buffer)

DETECTION SYSTEM Novolink kit (BondMax Leica)



● | IF | **Immunofluorescence (paraffin)** Not tested

● | FC | **Flow Cytometry** Not tested

● | IP | **Immunoprecipitation** Not tested

● | IHC-F | **Immunohistochemistry (frozen)** Not recommended

● | WB | **Western Blotting** Not tested

● | ICC | **Immunocytochemistry** Not tested

REFERENCES

Nam-Cha SH, Montes-Moreno S, Salcedo MT, Sanjuan J, Garcia JF and Piris MA. Lymphocyte-rich classical Hodgkin's lymphoma: distinctive tumor and microenvironment markers. *Modern Pathology* (2009) 22, 1006-1015.