

CD138| Validation File

TARGET Syndecan 1, CD138 antigen, Heparan sulfate proteoglycan fibroblast growth factor receptor

CLONE NAME CRUZ 180A

DESCRIPTION mouse monoclonal

ANTIGEN USED 300.19 mouse pre-B cell line transfected with human CD138 antigen

ISOTYPE IgG1

SPECIES REACTIVITY human

LOCALIZATION membrane

POSITIVE CONTROL tonsil

STORAGE BUFFER Tissue culture supernatant: 0.02% sodium azide

Purified antibody: PBS plus 1%BSA and 0.02% sodium azide. MAb concentration: 1mg/ml

STORAGE Aliquot and store at 4C. Do not freeze

 Recommended

 Inconclusive

 Not Recommended

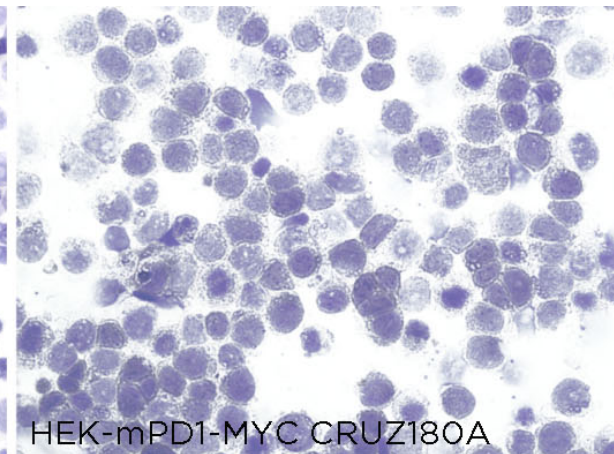
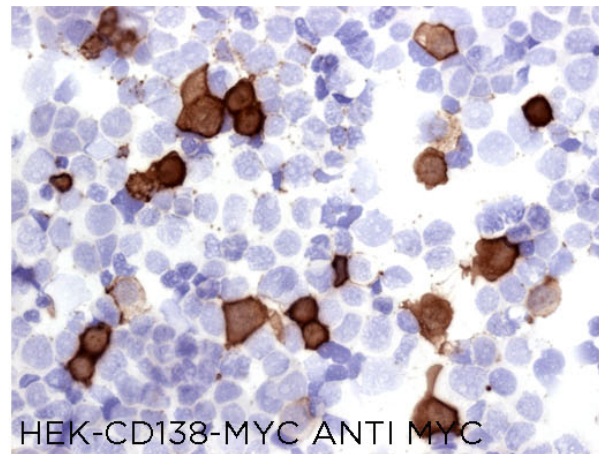
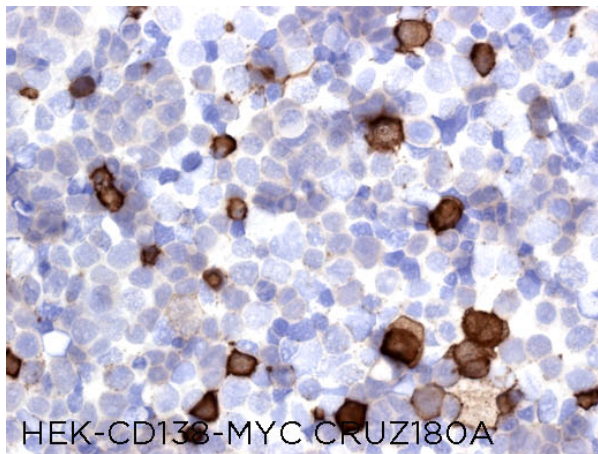
 Not Tested

APPLICATIONS

● | ICC | Immunocytochemistry

CRUZ180A mAb is able to detect human CD138 protein in immunocytochemistry.

To confirm that CRUZ180A mAb recognizes human CD138 protein, immunocytochemistry on frozen cytospin preparations of MYC-tagged CD138 in HEK293 was performed. Anti-MYC antibody was used as positive control. Cytospin preparation of mouse PD1 protein was used as a negative control.

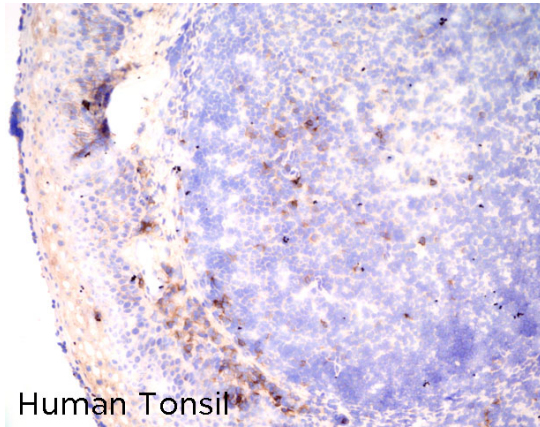


● | IHC-F | **Immunohistochemistry (frozen)**

CRUZ180A mAb can be used to detect CD138 protein in human frozen tissues.

TISSUE SAMPLE Human Tonsil

DILUTION 1:5 (supernatant)



● | IHC-P | Immunohistochemistry (paraffin)

CRUZ180A mAb can be used to detect CD138 protein in human paraffin tissues.

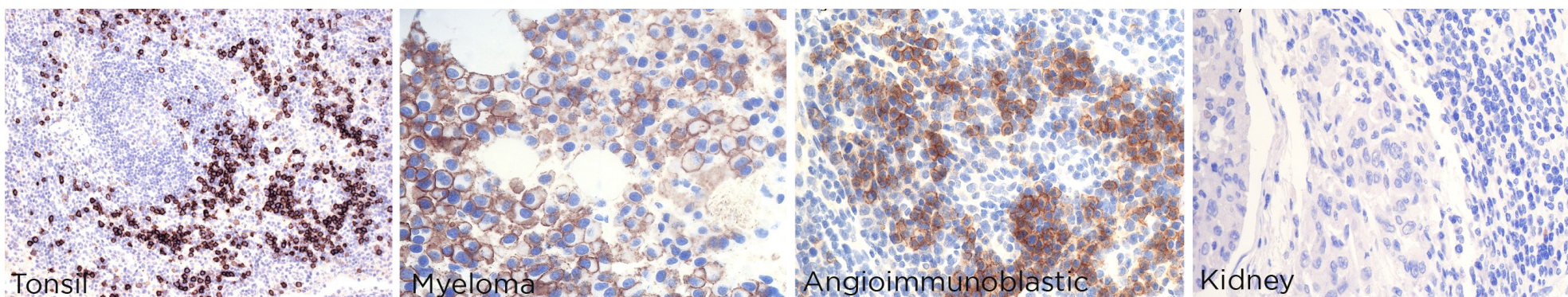
TISSUE SAMPLE Human tonsil, myeloma, Angioimmunoblastic lymphoma and kidney.

DILUTION CRUZ180A 1:100 (supernatant)

1:200 purified antibody (1mg/ml)

ANTIGEN RETRIEVAL 30 minutes ER1 (Citrate Buffer)

DETECTION SYSTEM Novolink kit (BondMax Leica)



● | FC | **Flow Cytometry**

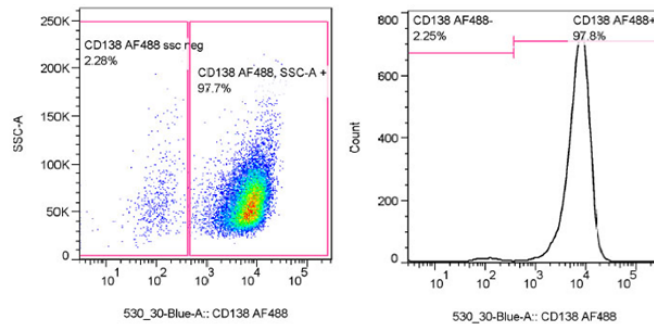
CRUZ180A mAb can be used to detect CD138 in immunofluorescence.

SAMPLE Human OPM2 (CD138+) and MHH-PREB-1 (CD138-) cell lines

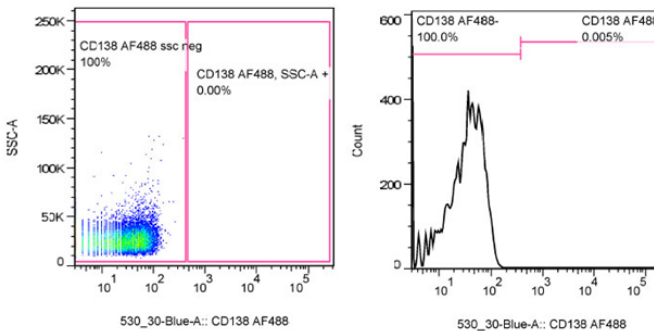
DILUTION CRUZ180A antibody was used as supernatant as 1:40 dilution/one million cells/tube

ANTIBODY INCUBATION 30 minutes

OPM2 cell line



MHH-PREB-1 cell line



● | IP | **Immunoprecipitation** Not working

● | IF | **Immunofluorescence** Not tested

● | WB | **Western Blotting** Not working