

## C-Myb | Validation File

**TARGET** human c-Myb

**HOMOLOGY** human a-Myb and human b-Myb homology has been discarded

**CLONE NAME** ANA236B

**DESCRIPTION** rat monoclonal

**ANTIGEN USED** HIS-c-Myb (aa402-aa640 fragment)

**ISOTYPE** IgG2a

**SPECIES REACTIVITY** human

**LOCALIZATION** nuclear

**POSITIVE CONTROL** Bone Marrow

**STORAGE BUFFER** Tissue culture supernatant: 0.02% sodium azide

Purified antibody: PBS plus 1%BSA and 0.02% sodium azide. MAb concentration: 1mg/ml

**STORAGE** Aliquot and store at 4C. Do not freeze

 Recommended

 Inconclusive

 Not Recommended

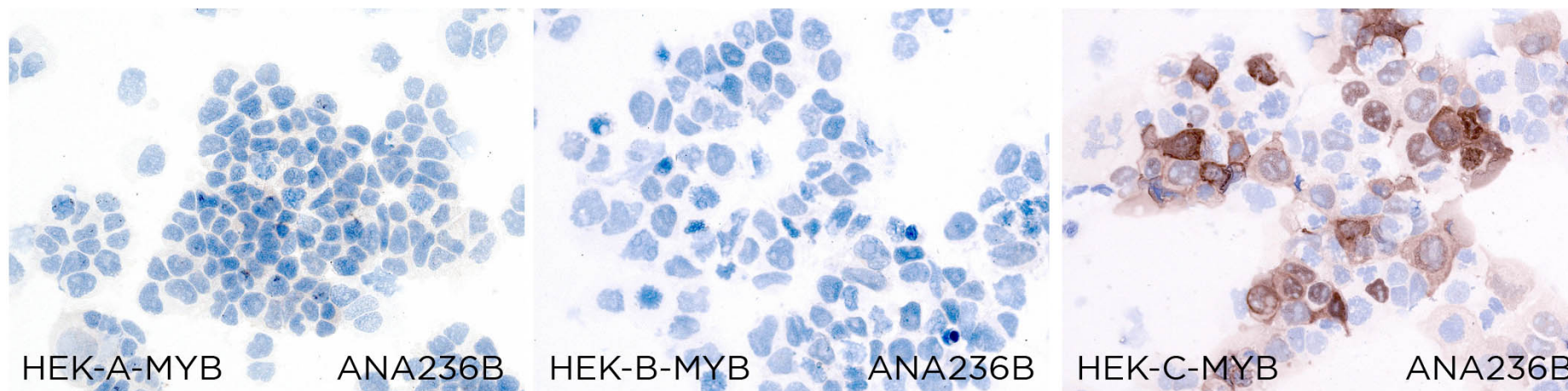
 Not Tested

# APPLICATIONS

## ● | ICC | Immunocytochemistry

ANA236B mAb is able to detect human C-Myb protein in immunocytochemistry.

To verify antibody specificity, immunohistochemistry in HEK-A-Myb, B-Myb and C-Myb transfected cells using rat monoclonal ANA236B antibody was performed. Nuclear staining was observed in HEK-C-Myb cytospin. No cross reactivity with the A-Myb and B-Myb family members was found.



● | WB | **Western Blotting**

ANA 236B mAb is able to detect human C-Myb protein by WB.

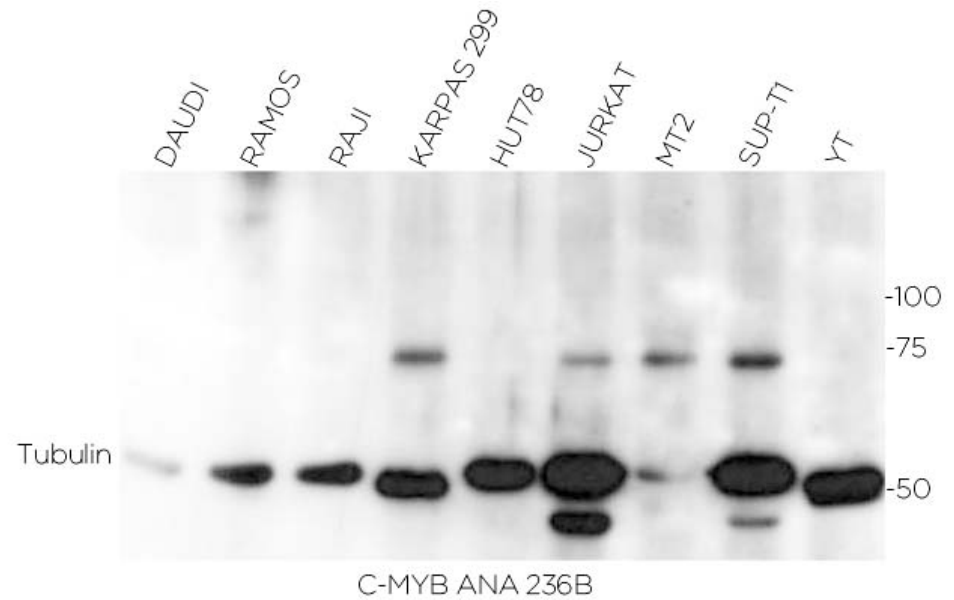
**DILUTION** ANA236B 1:50 purified antibody (1mg/ml)

Predicted molecular weight: **72kDa**

Observed molecular weight: **72kDa**

**LANES**

Lane 1 Daudi cell line	(150ug) (-)
Lane 2 Ramos cell line	(150ug) (-)
Lane 3 Raji cell line	(150ug) (-)
Lane 4 Karpas299 cell line	(150ug) (+)
Lane 5 Hut78 cell line	(150ug) (-)
Lane 6 Jurkat cell line	(150ug) (+)
Lane 7 MT2 cell line	(150ug) (+)
Lane 8 SUP-T1 cell line	(150ug) (+)
Lane 9 YT cell line	(150ug) (-)



● | IHC-P | **Immunohistochemistry (paraffin)**

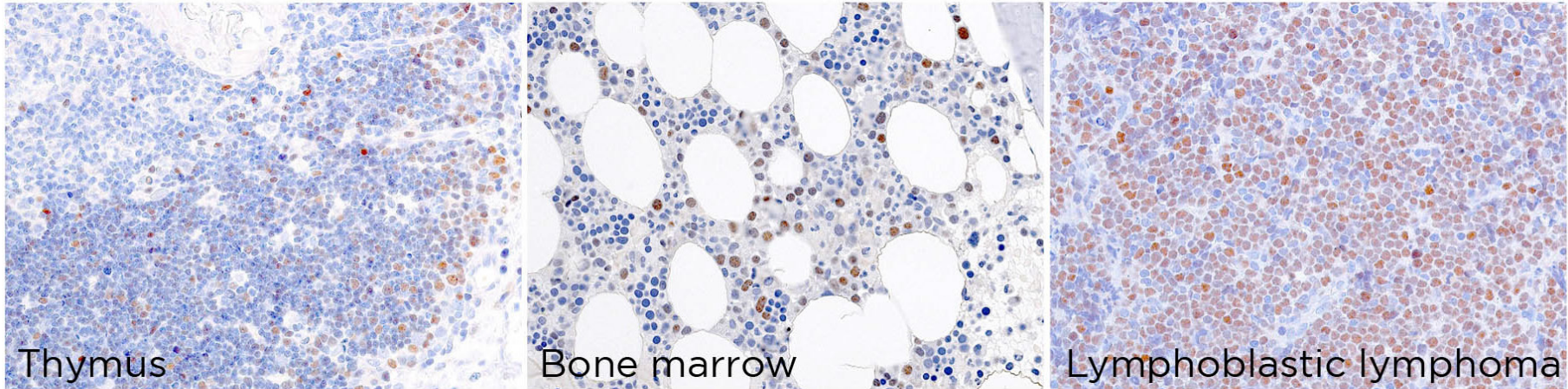
Antibody ANA236B can be used to detect C-Myb protein in human paraffin tissues.

**TISSUE SAMPLE** Human thymus, bone marrow, lymphoblastic lymphoma.

**DILUTION** 1:80 purified antibody (1mg/ml)

**ANTIGEN RETRIEVAL** 20 minutes ER2 (Tris-EDTA)

**DETECTION SYSTEM** Novolink kit (BondMax Leica)



- | IF | **Immunofluorescence (paraffin)** Not done
- | IHC-F | **Immunohistochemistry (frozen)** Not done
- | IP | **Immunoprecipitation** Not done
- | FC | **Flow Cytometry** Not done
- | M-IHQ-P | **Immunohistochemistry (paraffin)** Not done

**SOLD BY:** Abcam