

## BCL6 | Validation File

**TARGET** BCL6

**CLONE NAME** ST42B

**DESCRIPTION** mouse monoclonal

**ANTIGEN USED** GST-BCL6 (full-length protein sequence)

**ISOTYPE** IgG1

**SPECIES REACTIVITY** human and mouse

**LOCALIZATION** nuclear

**POSITIVE CONTROL** tonsil

**STORAGE BUFFER** Tissue culture supernatant: 0.02% sodium azide

Purified antibody: PBS plus 1%BSA and 0.02% sodium azide. MAb concentration: 1mg/ml

**STORAGE** Aliquot and store at 4C. Do not freeze



Recommended



Inconclusive



Not Recommended



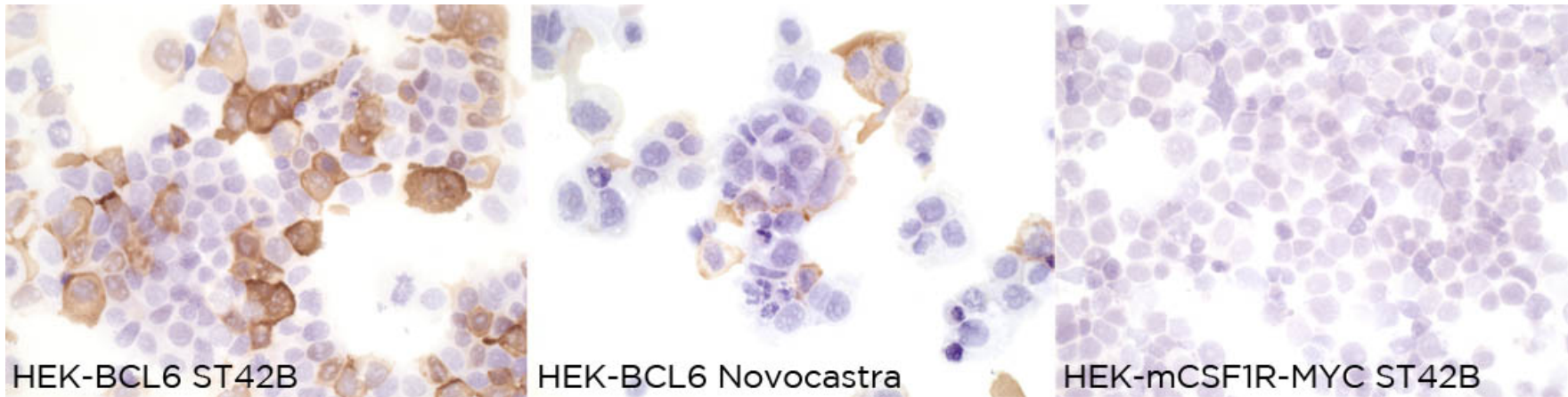
Not Tested

# APPLICATIONS

## ● | ICC | Immunocytochemistry

ST42B mAb is able to detect human BCL6 protein in immunocytochemistry.

To confirm that ST42B mAb recognizes human BCL6 protein, immunocytochemistry on frozen cytospin preparations of human BCL6 expressed in HEK293 was performed. Novocastra anti-BCL6 antibody was used as positive control. Cytospin preparation of MYC tagged mouse CSF1R protein was used as a negative control.



## ● | WB | Western Blotting

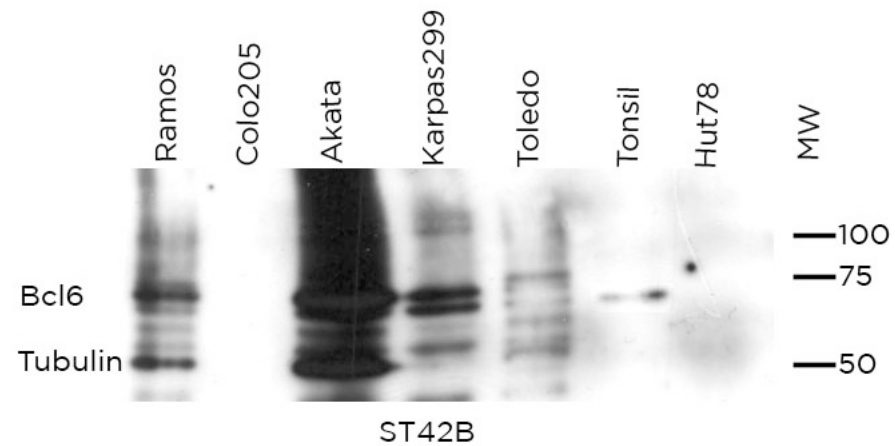
ST42B mAb is able to detect human BCL6 protein by WB.

**DILUTION** 1:20 (supernatant)

Predicted molecular weight: **95kDa**  
Observed molecular weight: **70kDa**

### LANES

Lane 1	Ramos cell line	(100ug) (+)
Lane 2	Colo205 cell line	(100ug) (-)
Lane 3	Akata cell line	(100ug) (+)
Lane 4	Karpas299 cell line	(100ug) (+)
Lane 5	Toledo cell line	(100ug) (+)
Lane 6	Human tonsil	(100ug) (+)
Lane 7	Hut78	(100ug) (-)



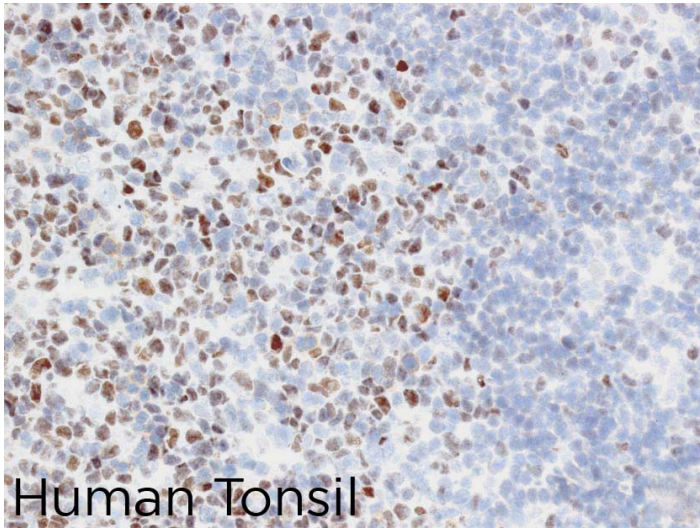
● | IHC-F | **Immunohistochemistry (frozen)**

ST42B antibody can be used to detect BCL6 protein in human frozen tissues.

**TISSUE SAMPLE** Human Tonsil

**DILUTION** 1:4 (Supernatant)

1:200 purified antibody



● | M-IHC-P | **Immunohistochemistry (paraffin)**

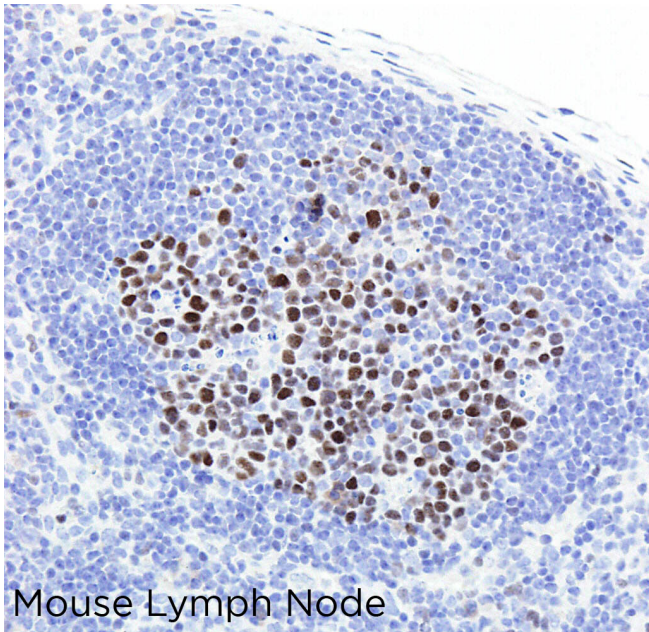
ST42B antibody can be used to detect BCL6 protein in human paraffin tissues.

**TISSUE SAMPLE** Mouse lymph node.

**DILUTION** ST42B no dilution (neat supernatant)  
1:100 purified antibody (1mg/ml)

**ANTIGEN RETRIEVAL** CC1 (high pH)

**DETECTION SYSTEM** Discovery Xt (Ventana) CC1 OmniMap Rabbit.



● | IHC-P | **Immunohistochemistry (paraffin)**

ST42B antibody can be used to detect BCL6 protein in human paraffin tissues.

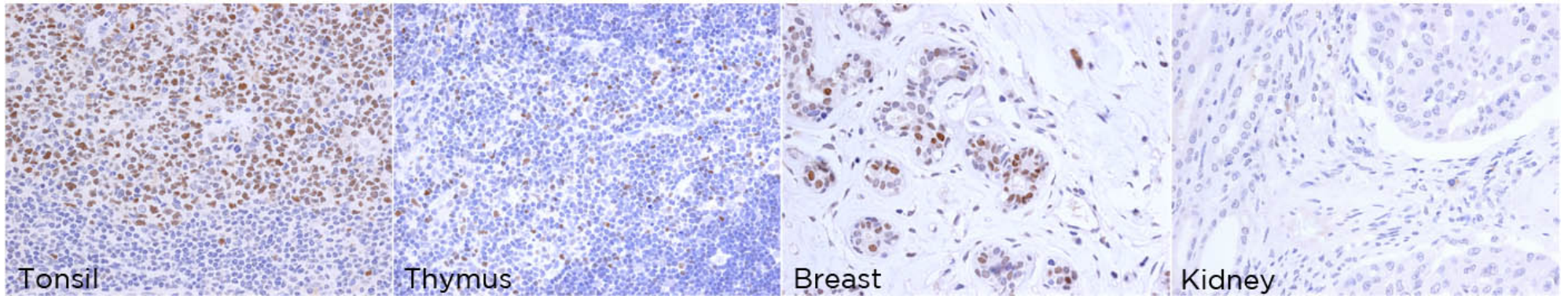
**TISSUE SAMPLE** Human Tonsil, thymus, breast and kidney.

**DILUTION** 1:4 (supernatant) 1:100 purified antibody (1mg/ml)

**ANTIGEN RETRIEVAL** 20min ER2 (Tris-EDTA)

**ANTIBODY INCUBATION** 30 minutes

**DETECTION SYSTEM** kit Novolink (Machine BondMax Leica)



● | IF | **Immunofluorescence (paraffin)**

ST42B antibody can be used to detect BCL6 in immunofluorescence.

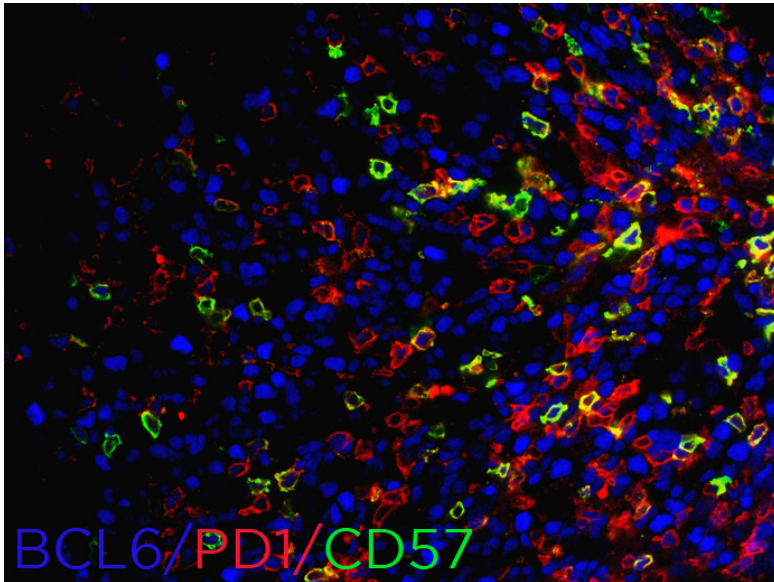
**TISSUE SAMPLE** Human tonsil

**DILUTION** ST42B 1:10 purified antibody (1mg/ml)

Anti-PD1 antibody (Clone NAT105C) no dilution (neat supernatant)

CD75 antibody 1:70

**ANTIGEN RETRIEVAL** 20 minutes ER2 (Tris-EDTA)



● | IP | **Immunoprecipitation** Not done

● | FC | **Flow Cytometry** Not done

## REFERENCES

Verdes-Montenegro JF, Garcia JF, Maestre L, Lucas-Campeno E, Sanchez-Verde L, Romero-Chala S, Piris MA, Roncador G. Genetic Immunization: A New Monoclonal Antibody for the Detection of BCL-6 Protein in Paraffin Sections. J Histochem Cytochem. 2006 54(1):31-8