

Alpha-Tubulin | **Validation File**

TARGET Human alpha-tubulin

PROTEIN PREDICTED MOLECULAR WEIGHT 50KDa

CLONE NAME F2

DESCRIPTION mouse monoclonal

ANTIGEN USED not know

ISOTYPE IgG1

SPECIES REACTIVITY human

LOCALIZATION cytoplasm

POSITIVE CONTROL tonsil

STORAGE BUFFER Tissue culture supernatant: 0.02% sodium azide

Purified antibody: PBS plus 1%BSA and 0.02% sodium azide. MAb concentration: 1mg/ml

STORAGE Aliquot and store at 4C. Do not freeze

 Recommended

 Inconclusive

 Not Recommended

 Not Tested

APPLICATIONS

● | WB | **Western Blotting**

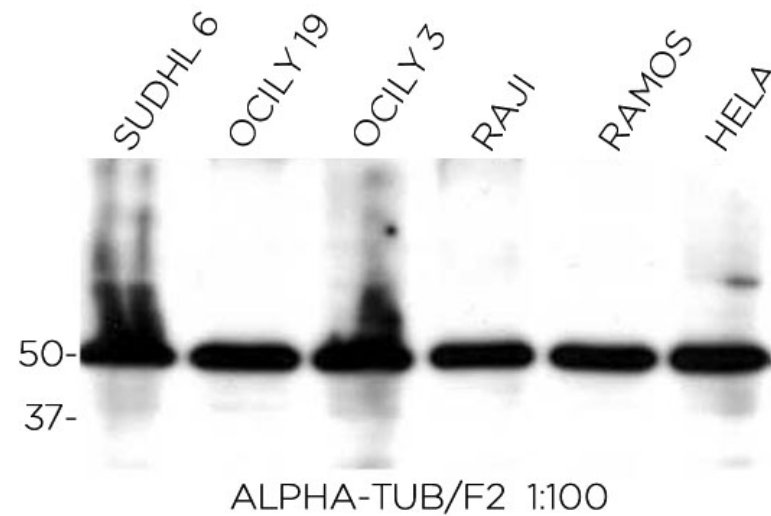
F2 mAb is able to detect human alpha-tubulin protein by WB.

DILUTION 1:100 (supernatant) and 1:20000 (purified).

Predicted molecular weight: **50kDa**
Observed molecular weight: **50kDa**

LANES

Lane 1 SUDHL6 cell line (100ug) (+)
Lane 2 OCILY19 cell line (100ug) (+)
Lane 3 OCILY3 cell line (100ug) (+)
Lane 4 RAJI cell line (100ug) (+)
Lane 5 RAMOS cell line (100ug) (+)
Lane 6 HELA cell line (100ug) (+)



● | IHC-P | **Immunohistochemistry (paraffin)**

F2 antibody can be used to detect Alpha-Tubulin protein in human paraffin tissues.

TISSUE SAMPLE Human tonsil

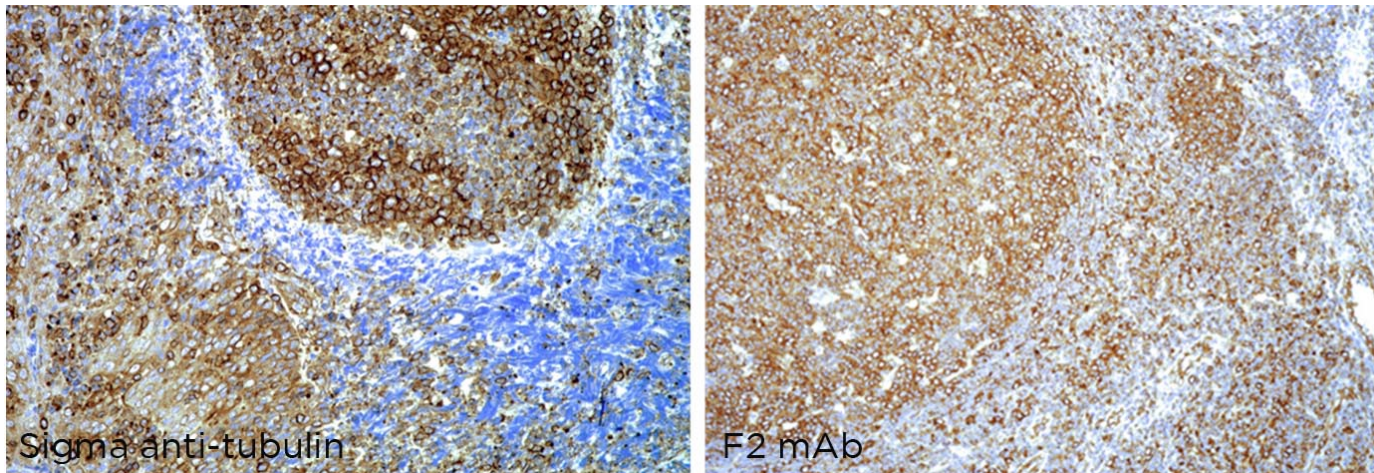
DILUTION 1:100 (supernatant)

1:1500 purified antibody

Sigma mouse mAb (T9026) was diluted 1:8000

ANTIGEN RETRIEVAL 20 minutes ER1 (Citrate)

SYSTEM Novolink kit (BondMax Leica)



- | IP | **Immunoprecipitation** Not done
- | ICC | **Immunocytochemistry** Not done
- | IHC-F | **Immunohistochemistry (frozen)** Not done
- | IF | **Immunofluorescence (paraffin)** Not done