

ALDH4A1 | Validation File

TARGET ALDH4A1 (Delta-1-pyrroline-5-carboxylate dehydrogenase, mitochondrial)

CLONE NAME ANDER31C

DESCRIPTION Mouse monoclonal

ANTIGEN USED human ALDH4A1-HIS-GST fragment and ALDH4A1-HIS-GST full protein

ISOTYPE IgG1

SPECIES REACTIVITY human

LOCALIZATION mitochondrion

POSITIVE CONTROL kidney

STORAGE BUFFER Tissue culture supernatant: 0.02% sodium azide

Purified antibody: PBS plus 1%BSA and 0.02% sodium azide. MAb concentration: 1mg/ml

STORAGE Aliquot and store at 4C. Do not freeze



Recommended



Inconclusive



Not Recommended



Not Tested

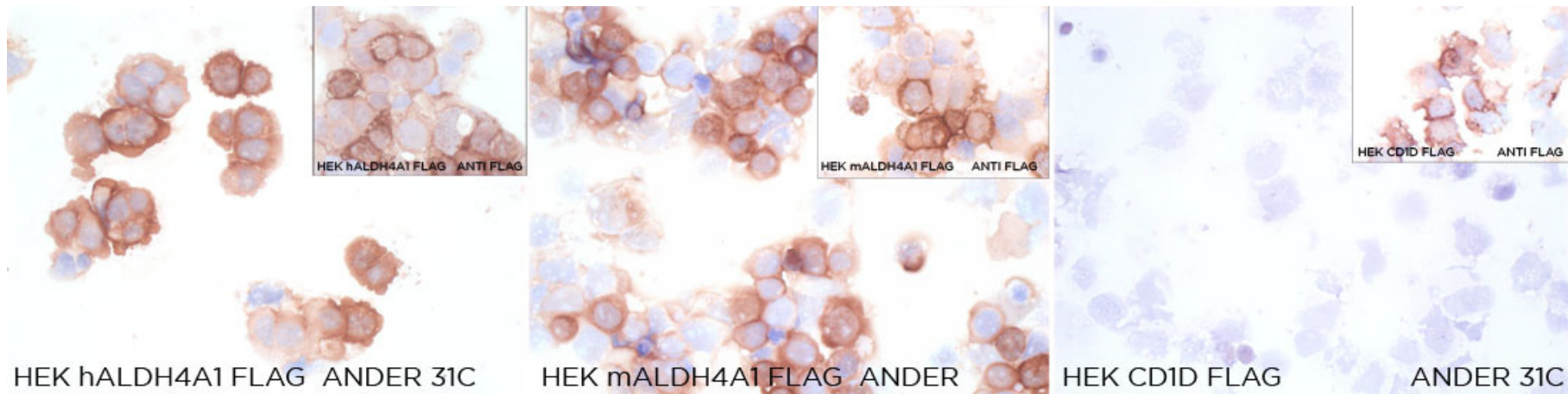
APPLICATIONS

● | ICC | *Immunocytochemistry*

ANDER31C is able to detect human and mouse ALDH4A1 protein in immunocytochemistry

DILUTION Neat supernatant

To confirm that ANDER31C mAb recognizes human and mouse ALDH4A1 protein, immunocytochemistry on frozen cytospin preparations of human and mouse ALDH4A1 expressed in HEK293 cell line was performed. Anti-FLAG antibody was used as positive control. HEK-CD1D-FLAG was used as negative control.



● | WB | **Western Blotting**

ANDER31C mAb is able to detect human and mouse ALDH4A1 protein by WB.

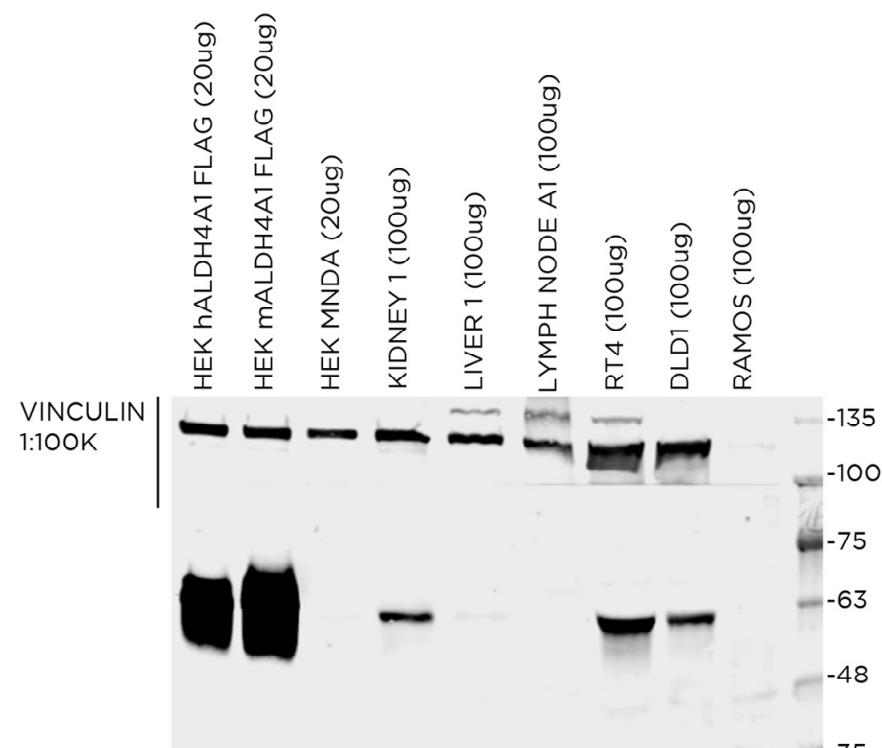
DILUTION neat supernatant

Predicted molecular weight: **61kDa**
Observed molecular weight: **61kDa**

LANES

Lane 1 HEK-hALDH4A1-FLAG	(20ug) (+)
Lane 2 HEK-mALDH4A1-FLAG	(20ug) (+)
Lane 3 HEK-MNDA	(20ug) (-)
Lane 4 Human kidney	(100ug) (+)
Lane 5 Human liver	(100ug) (+)
Lane 6 Human lymph node	(100ug) (-)
Lane 7 RT4 cell line	(100ug) (+)
Lane 8 DLD1 cell line	(100ug) (+)
Lane 9 Ramos cell line	(100ug) (-)

Vinculin was used as loading control



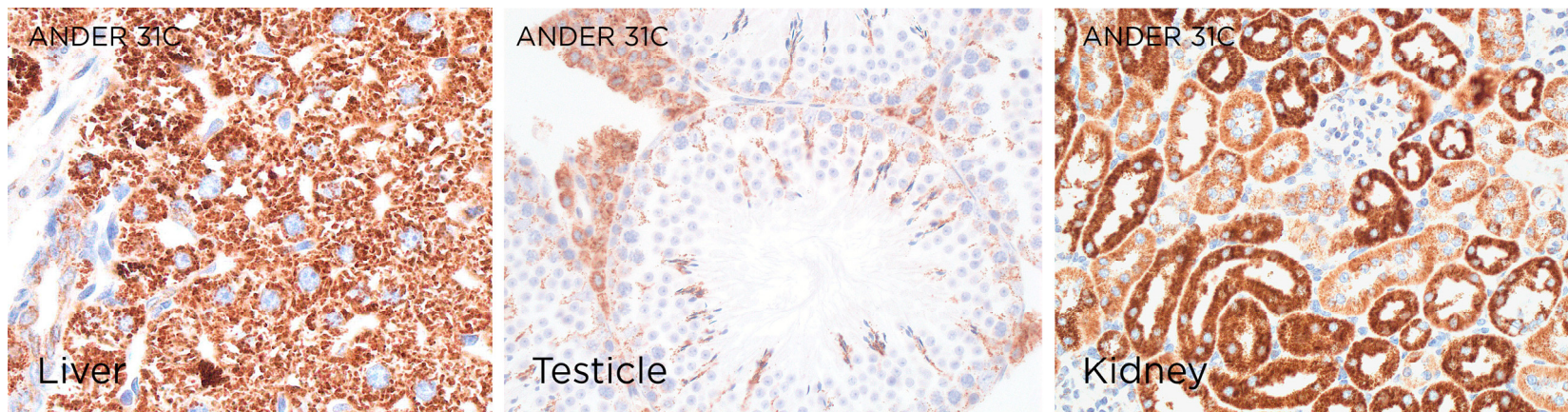
● | M-IHC-P | **Immunohistochemistry (paraffin)**

ANDER31C mAb can be used to detect mouse ALDH4A1 protein in paraffin tissues

TISSUE SAMPLE kidney and liver

DILUTION neat supernatant 1:3

DETECTION SYSTEM Discovery XT (Ventana) CC1 OmniMap rabbit. Please add a rabbit anti-rat biotinylated



● | IHC-P | ***Immunohistochemistry (paraffin)***

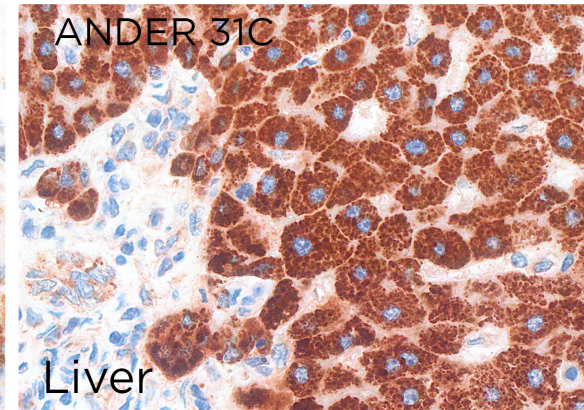
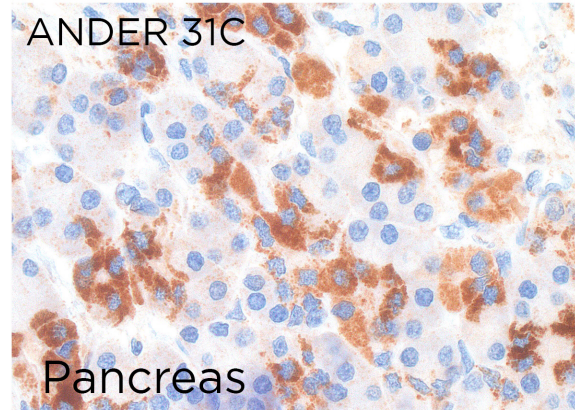
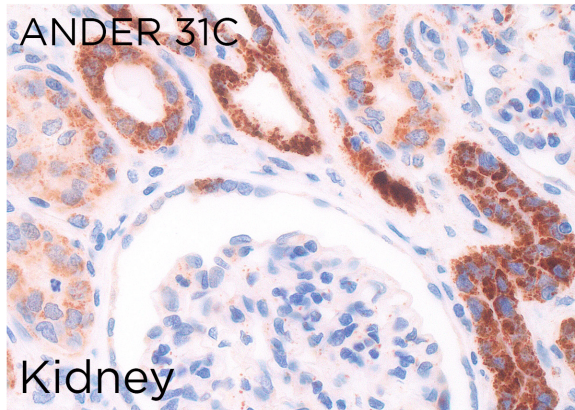
ANDER31C mAb can be used to detect human ALDH4A1 protein in paraffin tissues

TISSUE SAMPLE kidney, pancreas and liver

DILUTION 1:60 supernatant

ANT. RETRIEVAL 20 minutes ER2 (Tris-EDTA)

DETECTION SYSTEM Novolink kit (BondMax Leica)

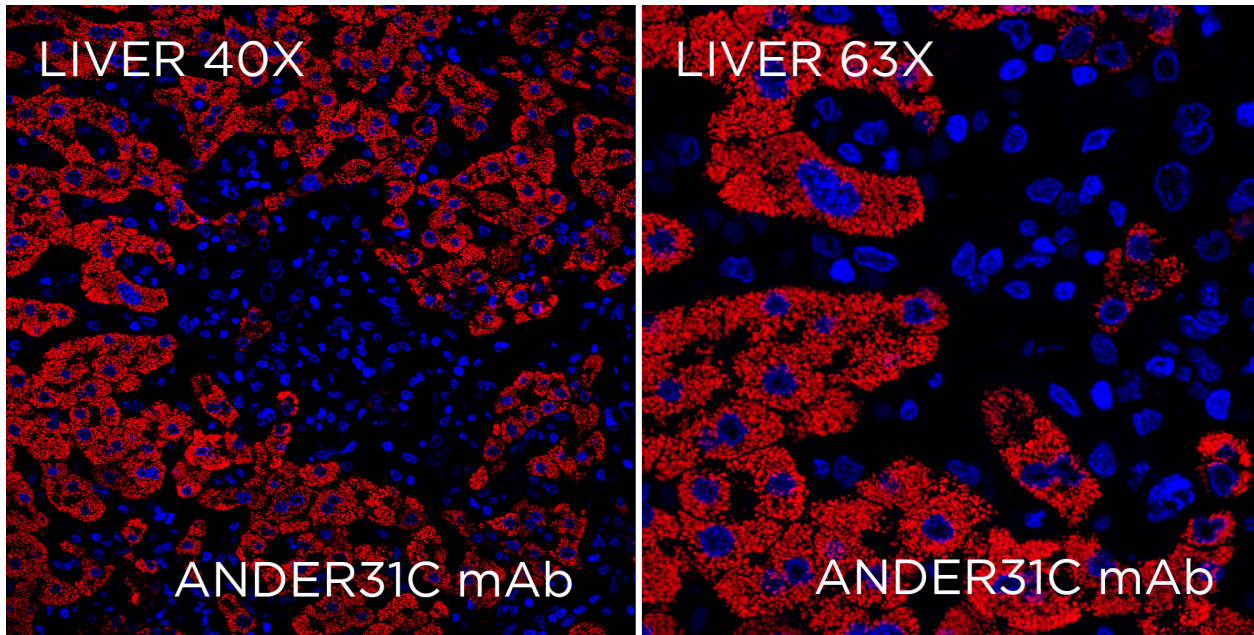


● | IF | **Immunofluorescence (paraffin)**

ANDER31C mAb can be used to detect human ALDH4A1 protein by IF in paraffin tissues

SAMPLE human kidney and liver

DILUTION neat supernatant 1:40



● | IHC-F | **Immunohistochemistry (frozen)** Not tested

● | FC | **Flow Cytometry** Not tested

● | IP | **Immunoprecipitation** Not Tested