

AID | Validation File

TARGET AID

CLONE NAME JUA51E

DESCRIPTION mouse monoclonal

ANTIGEN USED EVDDLRFDAFRMLGF peptide

ISOTYPE IgG1

SPECIES REACTIVITY human

LOCALIZATION nuclear and cytoplasmic

POSITIVE CONTROL tonsil

STORAGE BUFFER Tissue culture supernatant: 0.02% sodium azide

STORAGE Aliquot and store at 4C. Do not freeze

 Recommended

 Inconclusive

 Not Recommended

 Not Tested

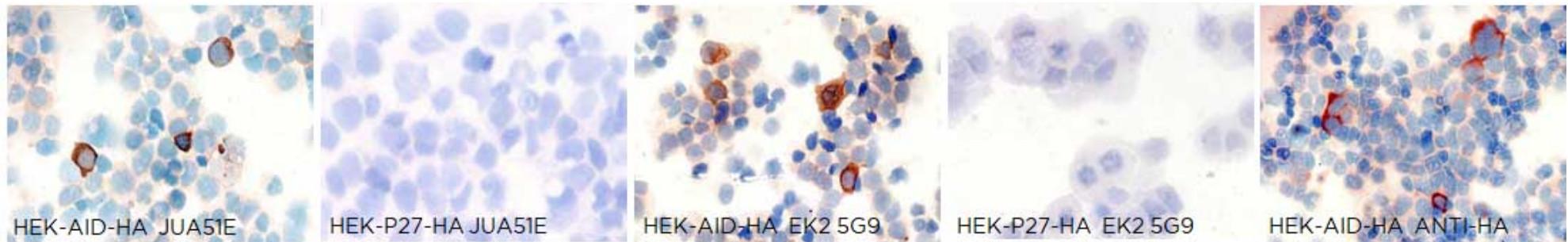
APPLICATIONS

● | ICC | Immunocytochemistry

JUA51E mAb is able to detect human AID protein in immunocytochemistry

DILUTION no dilution (neat supernatant)

To confirm that JUA51E mAb recognizes human AID protein, immunocytochemistry on frozen cytospin preparations of HA-tagged human AID expressed in HEK293 was performed. Labeling with the anti-AID (clone EK 5G9) and anti-HA antibody were used as positive control. Cytospin preparation of human HA-tagged human p27 protein was used as a negative control.



● | WB | **Western Blotting**

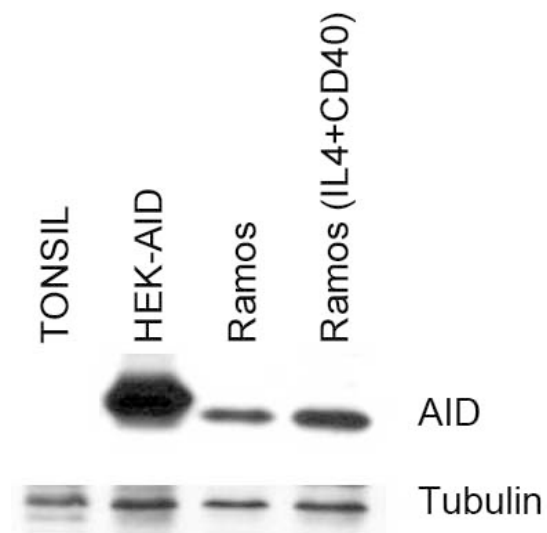
JUA51E mAb is able to detect human AID protein by WB.

DILUTION no dilution (neat supernatant).

Predicted molecular weight: **24kDa**
Observed molecular weight: **26kDa**

LANES

Lane 1 Human tonsil	(100ug) (-)
Lane 2 HEK-AID-HA	(20ug) (+)
Lane 3 Ramos cell line	(100ug) (+)
Lane 4 Ramos cell line treated with IL4+CD40	(100ug) (+)



● | IHC-P | **Immunohistochemistry (paraffin)**

Antibody JUA51E can be used to detect AID protein in human paraffin tissue

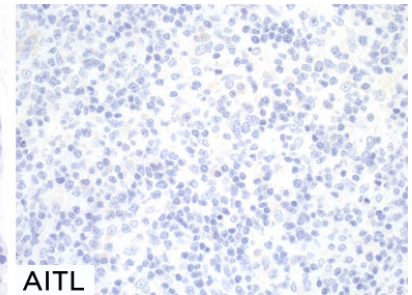
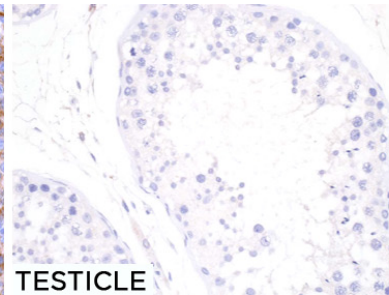
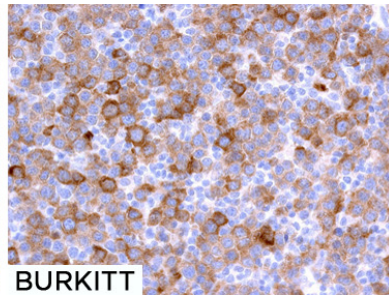
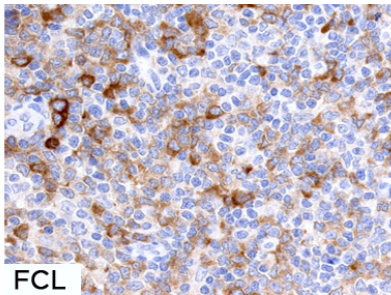
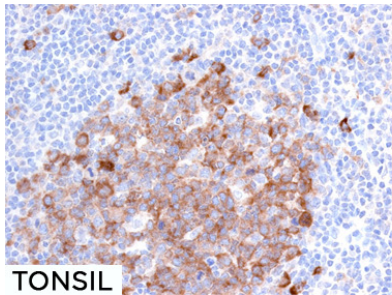
TISSUE SAMPLE Human tonsil, follicular cell lymphoma and Burkitt lymphoma

DILUTION 1:2 (supernatant)

ANTIGEN RETRIEVAL 20 minutes ER2 (Tris-EDTA)

ANTIBODY INCUBATION 30 minutes

DETECTION SYSTEM Novolink kit (BondMax Leica)



● | IF | **Immunofluorescence (paraffin)**

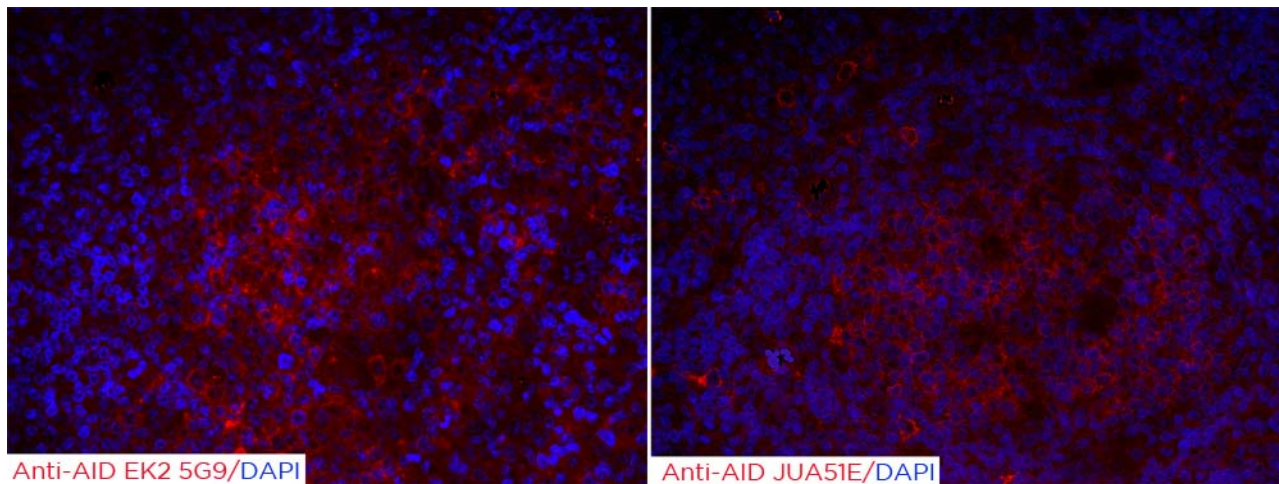
Antibody JUA51E can be used to detect AID protein by immunofluorescence

TISSUE SAMPLE Human tonsil

DILUTION No Dilution (Neat supernatant)

Anti-AID antibody (Clone EK2 5G9) 1:200

ANTIGEN RETRIEVAL 20 minutes ER2 (Tris-EDTA)



● | IP | **Immunoprecipitation** Not done

● | IHC-F | **Immunohistochemistry (frozen)** Not done