

A-B-C MYB | Validation File

TARGET A-B-C MYB

CLONE NAME DANI51B

DESCRIPTION Rat monoclonal

ANTIGEN USED GST-alphaMYB (1-473aa) protein

ISOTYPE IgG2a

CROOSREACTIVITY cross-reacts with B-MYB and C-MYB family members

SPECIES REACTIVITY human

LOCALIZATION nuclear

POSITIVE CONTROL tonsil

STORAGE BUFFER Tissue culture supernatant: 0.02% sodium azide

STORAGE Aliquot and store at 4C. Do not freeze

 Recommended

 Inconclusive

 Not Recommended

 Not Tested

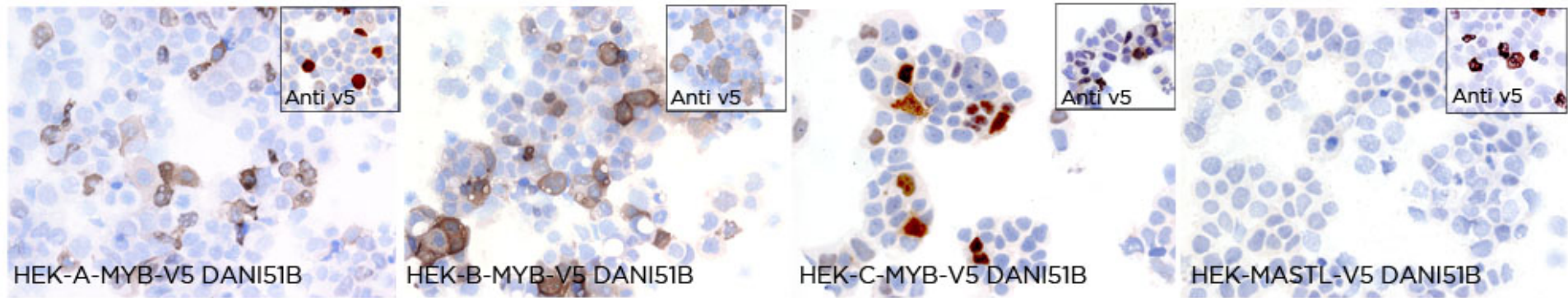
APPLICATIONS

● | ICC | Immunocytochemistry

DANI51B is able to detect human A-B-C MYB protein in immunocytochemistry

DILUTION No dilution (neat supernatant)

To confirm that DANI51B mAb recognized human A-B-C MYB protein, immunohistochemistry on frozen cytopspins preparations of V5-tagged A-MYB, B-MYB and C-MYB expressed in HEK293T cell line was performed. HEK293T-V5-MASTL was used as negative control.



● | WB | **Western Blotting**

DANI51B mAb is able to detect human A-B-C MYB protein by WB.

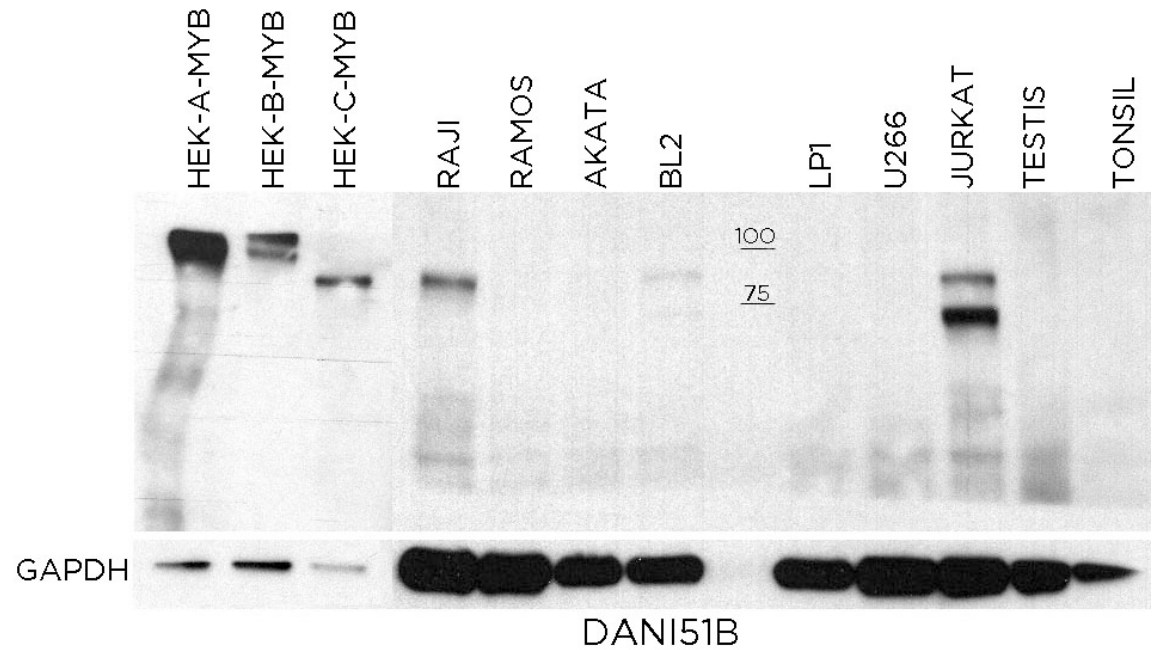
DILUTION neat supernatant

Predicted molecular weight

A-MYB **85kDa**
 B-MYB **79kDa**
 C-MYB **72kDa**

LANES

Lane 1 HEK 293T-V5-A-MYB (10ug) (+)
 Lane 2 HEK 293T-B-MYB (10ug) (+)
 Lane 3 HEK 293T-C-MYB (10ug) (+)
 Lane 4 Raji cell line (100ug) (+)
 Lane 5 Ramos cell line (100ug) (-)
 Lane 6 Akata cell line (100ug) (-)
 Lane 7 BL2 cell line (100ug) (+)
 Lane 8 LP1 cell line (100ug) (-)
 Lane 9 U266 cell line (100ug) (-)
 Lane 10 Jurkat cell line (100ug) (+)
 Lane 11 Human testis (100ug) (-)
 Lane 12 Human tonsil (100ug) (-)

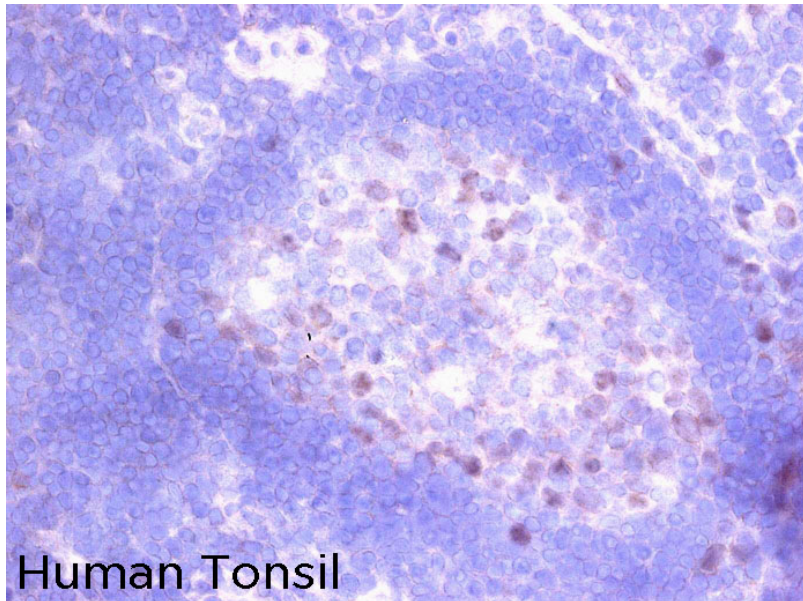


● | IHC-F | **Immunohistochemistry (frozen)**

DANI51B mAb can be used to detect A-B-C MYB protein in human frozen tissues.

TISSUE SAMPLE human tonsil

DILUTION neat supernatant



● | IHC-P | **Immunohistochemistry (paraffin)**

DANI51B mAb can be used to detect A-B-C MYB protein in human paraffin tissues

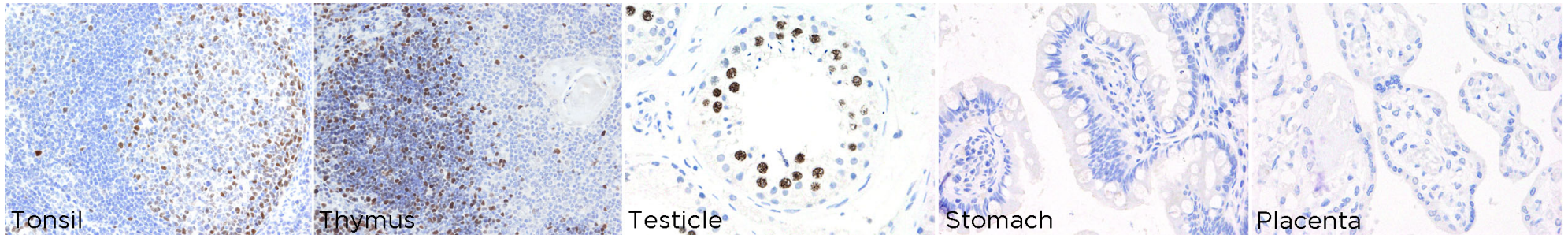
TISSUE SAMPLE human tonsil, thymus, testicle, stomach and placenta

DILUTION 1:2 supernatant

ANT. RETRIEVAL 20 minutes ER2 (Tris-EDTA)

Ab INCUBATION 30 minutes

DETECTION SYSTEM Novolink kit (BondMax Leica)



● | IF | **Immunofluorescence (paraffin)** Not recommended

● | FC | **Flow Cytometry** Not Tested

● | IP | **Immunoprecipitation** Not Tested