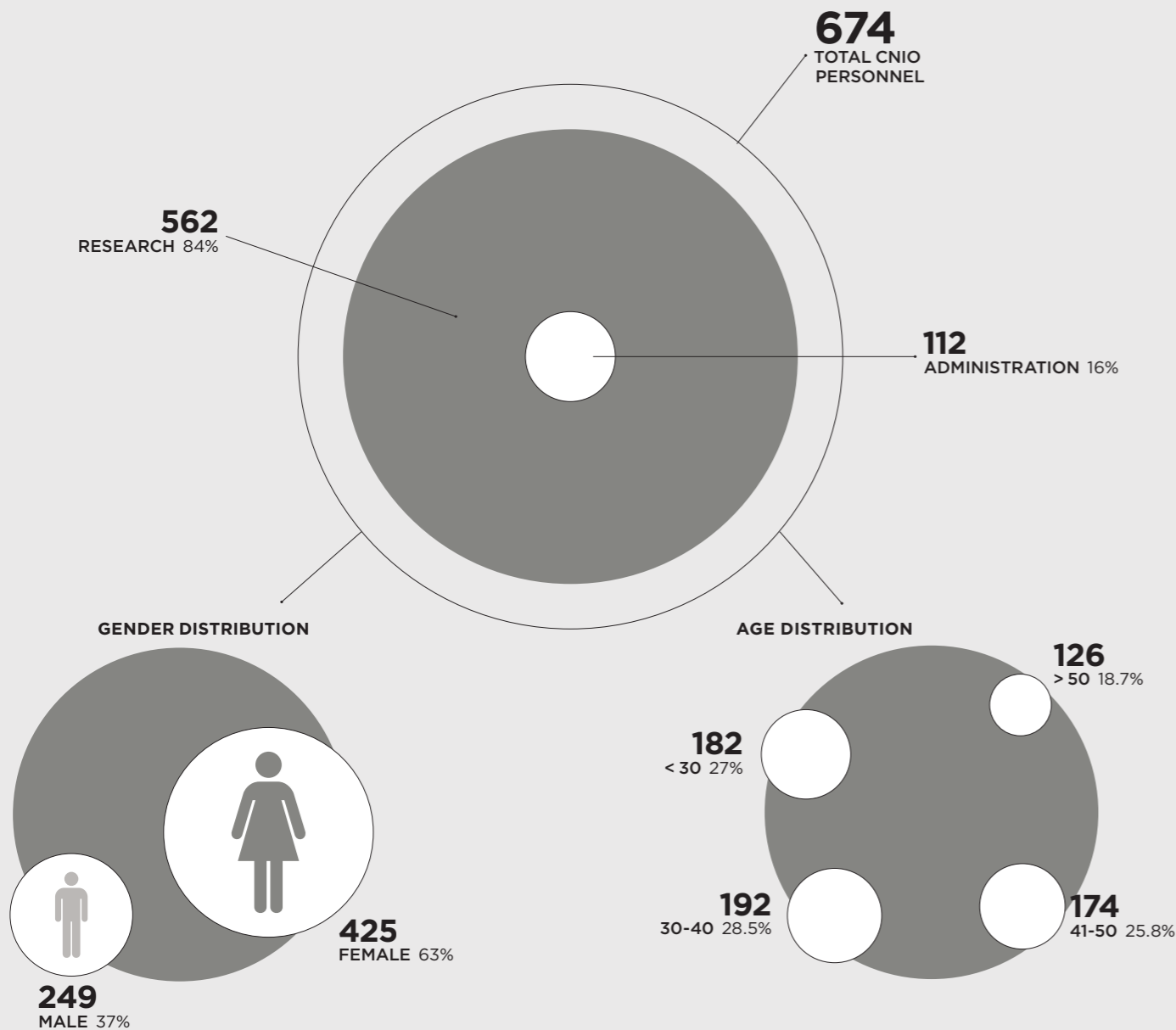


CNIO PERSONNEL 2023

SCIENTIFIC PERSONNEL 2023

TOTAL SCIENTIFIC PERSONNEL **562**



GENDER DISTRIBUTION IN SENIOR ACADEMIC AND MANAGEMENT POSITIONS

PRINCIPAL INVESTIGATORS (GROUP LEADERS, HEADS OF UNIT/SECTION)	FEMALE	51%	25	
	MALE	49%	24	
SCIENTIFIC DIRECTION: DIRECTORS, HEADS OF AREA	FEMALE	60%	9	
	MALE	40%	6	
MANAGEMENT: DIRECTORS, HEADS OF AREA	FEMALE	27%	4	
	MALE	73%	11	

DISTRIBUTION BY PROGRAMMES

MOLECULAR ONCOLOGY 32.7%	184	
STRUCTURAL BIOLOGY 9.6%	54	
HUMAN CANCER GENETICS 10%	56	
CLINICAL RESEARCH 25.4%	143	
BIOTECHNOLOGY 16.4%	92	
EXPERIMENTAL THERAPEUTICS 4.6%	26	
BIOBANK 1.3%	7	

DISTRIBUTION BY PROFESSIONAL CATEGORY

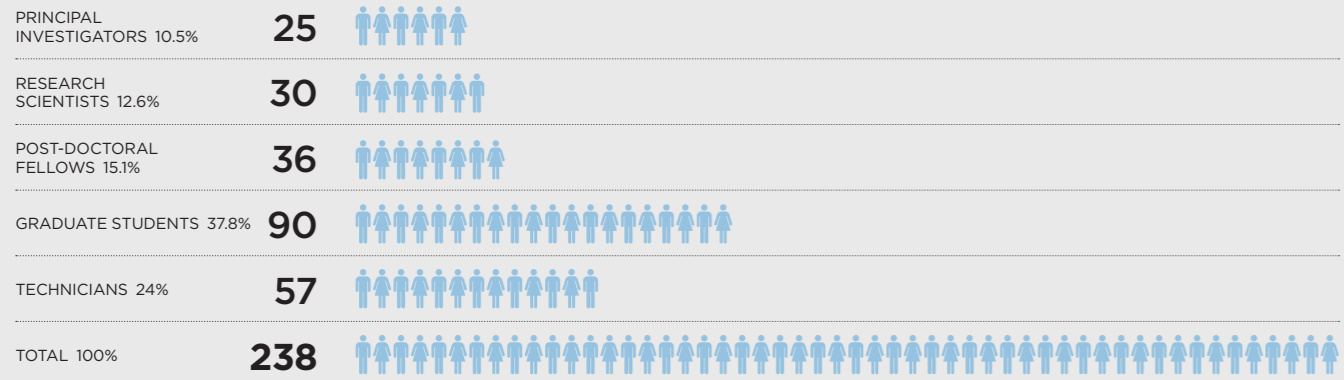
PRINCIPAL INVESTIGATORS 8.7%	49	
RESEARCH SCIENTISTS 13.5%	76	
POST-DOCTORAL FELLOWS 12%	67	
GRADUATE STUDENTS 26%	146	
TECHNICIANS 39.8%	224	

GENDER DISTRIBUTION BY PROFESSIONAL CATEGORY

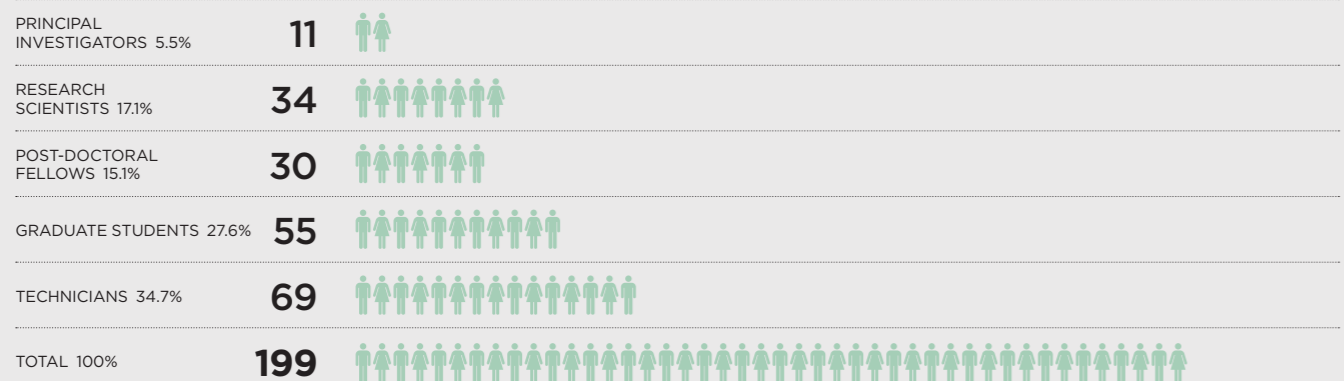
PRINCIPAL INVESTIGATORS	FEMALE	51%	25	
	MALE	49%	24	
RESEARCH SCIENTISTS	FEMALE	74%	56	
	MALE	26%	20	
POST-DOCTORAL FELLOWS	FEMALE	64%	43	
	MALE	36%	24	
GRADUATE STUDENTS	FEMALE	58%	85	
	MALE	42%	61	
TECHNICIANS	FEMALE	75%	168	
	MALE	25%	56	
TOTAL SCIENTIFIC PERSONNEL	FEMALE		377	
	MALE		185	

DISTRIBUTION BY PROFESSIONAL CATEGORY IN: BASIC RESEARCH

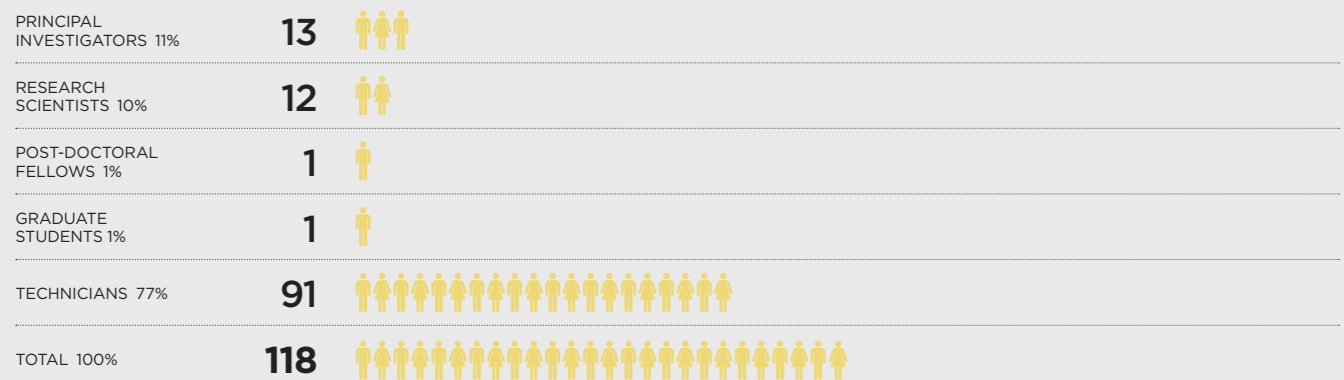
TOTAL SCIENTIFIC PERSONNEL **562**



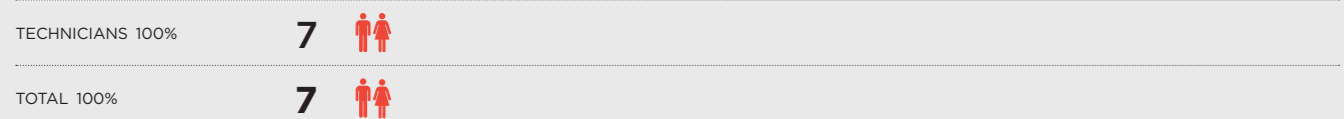
DISTRIBUTION BY PROFESSIONAL CATEGORY IN: TRANSLATIONAL RESEARCH



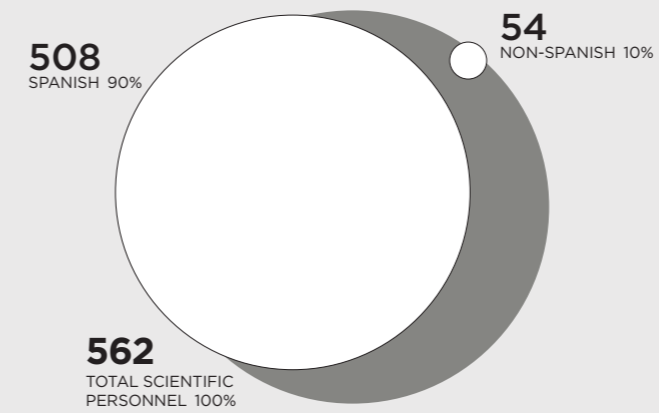
DISTRIBUTION BY PROFESSIONAL CATEGORY IN: INNOVATION



DISTRIBUTION BY PROFESSIONAL CATEGORY IN: BIOBANK



SCIENTIFIC PERSONNEL: NATIONAL ORIGIN



FOREIGN SCIENTIFIC PERSONNEL: DISTRIBUTION BY PROFESSIONAL CATEGORY



Total foreign scientific personnel 54
Percent values represent percentages of foreign employees of the total CNIO personnel within each category

DISTRIBUTION OF SCIENTIFIC PERSONNEL BY NATIONAL ORIGIN

